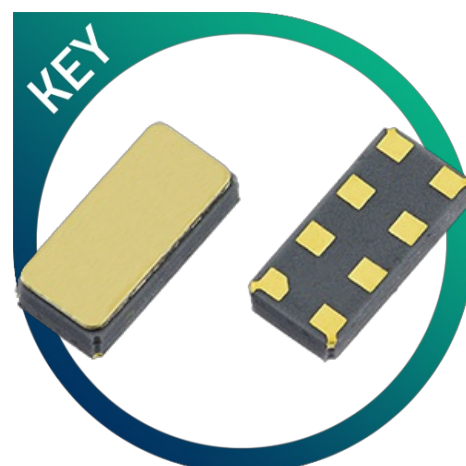


# RV-8803-C7

## RTC I<sup>2</sup>C bus High Accuracy

- High accuracy, ultra low power
- Time stamp event input function
- I2C-Bus interface (up to 400kHz)
- AEC-Q200 compliant option
- Previously named RV8803C7



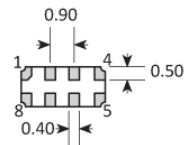
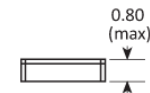
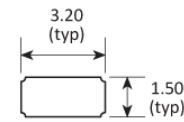
### CONFIGURABLE OPTIONS

Parameter	Option Code
<a href="#">Frequencies (selectable)</a>	
32.768kHz, 1024Hz, 1Hz	
<a href="#">Qualification</a>	
Any	
Commercial	
AEC-Q200 (Automotive)	A

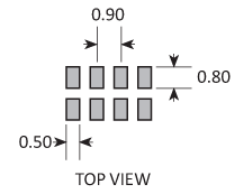
## SPECIFICATIONS

Frequencies (selectable)	32.768kHz, 1024Hz, 1Hz
Frequency tolerance (1Hz)	±3ppm max, -40+85°C
Frequency tolerance (32.768kHz)	±10ppm typ, ±20ppm max, 25°C
Time accuracy	±1.5ppm max (0.13s/day), 0+50°C ±3ppm max (0.26s/day), -40+85°C
Turnover temperature (T <sub>0</sub> )	+25°C ±5°C
Frequency / temp coefficient	-0.035ppm/°C <sup>2</sup> ±10%
Operating temperature range	-40 to +85°C
Storage temperature range	-55 to +125°C
Supply voltage (V <sub>DD</sub> )	1.5 ~ 5.5V
Supply current	240/400nA typ/max, V <sub>DD</sub> =3V
Ageing (25°C)	±3ppm max first year
Shock and vibration resistance	±5ppm, 5,000g, 0.3ms, ½ sine ±5ppm, 20g, 10.0 ~ 2,000Hz
Soldering condition	Reflow, 260°C, 20 sec max

## PACKAGE DRAWING



SOLDER PAD LAYOUT



PAD	CONNECTION	PAD	CONNECTION
1	Serial data (SDA)	5	Ground (VSS)
2	Frequency output (CLKOUT)	6	Interrupt output (INT)
3	Supply voltage (VDD)	7	Event input (EVI)
4	Clock output enable (CLKOE)	8	Serial clock input (SCL)

Dimensions in mm

## ORDERING INFORMATION

To request a quotation for the RV8803C7 please use the configurable options form to choose the options you require and then submit your configured product to our team. Our expert advisers are always happy to help with your requirements and can be contacted on +44 1460 256 100 or at [sales@golledge.com](mailto:sales@golledge.com).

Following product selection you will be issued with a seven character Golledge part number. Your Golledge part number is the internationally accepted Golledge manufacturing part number (MPN) that should be used for all project documentation, including bills of materials (BoMs) and purchase orders.

If you have any queries regarding any of our documentation our dedicated sales team will be happy to help.

## TECHNICAL RESOURCES

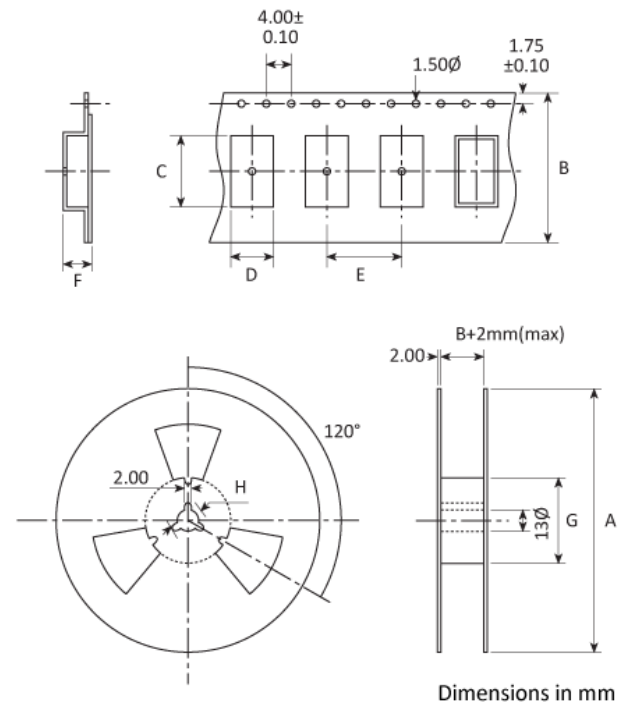
RV8803C7\_App\_Man.pdf

## APPLICATIONS

The RV-8803-C7 real time clock is a versatile component suitable for a wide range of applications and uses including:

- Multi-circuit Power Metering
- Smart Metering
- Commercial White Goods
- Tracking Devices
- Automotive
- Industrial
- Healthcare

## TAPE & REEL SPECIFICATION



A:178\* B:12 C:3.5 D:1.8 E:4.0 F:1.0 G:80 H:21

\*Larger reel sizes are available

## HANDLING & STORAGE



Human Body Model (HBM) 1A (250V to < 500V)



Moisture Sensitivity Level (MSL): 1

## MATERIAL COMPOSITION



Lead-free (< 0.1% by weight )



Product is RoHS 2 compliant

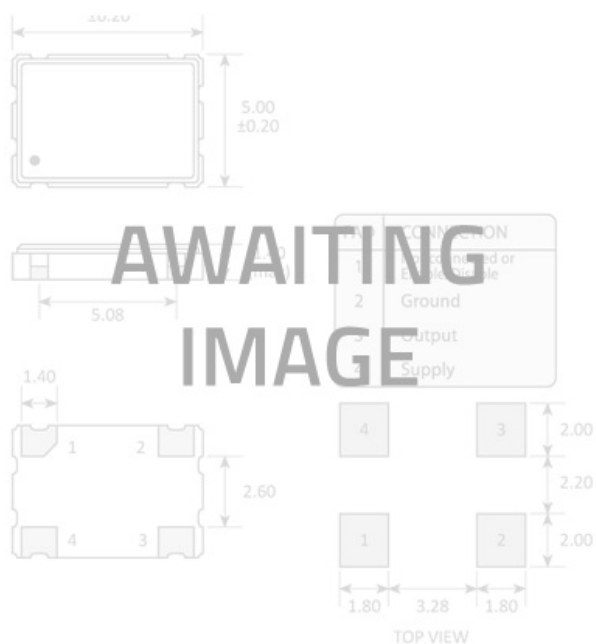
## CONSTRUCTION

SON 8-pin ceramic package

## PRODUCT REGULATORY DECLARATIONS

MCDFamily HC49.pdf  
MCDVariantGSX-1B.pdf  
CMRT\_Test.xlsx  
Test word document.docx  
Test Presentation.pptx

## OTHER INFORMATION



Additional Text in the Other Info section

## OTHER INFORMATION

### About Golledge

We are the UK's leading supplier of frequency control products and are proud to serve the global electronics industry. Our philosophy is a focus firmly on your requirements by striving to meet and exceed your needs. We do this by ensuring the utmost quality and consistency in our products and services. If you have any queries about the Golledge service or any of our products please get in touch, we'd love to hear from you.

### Come and visit

Eaglewood Park, ILMINSTER,  
Somerset, TA19 9DQ, England

### Give us a call

Tel: +44 1460 256 100  
Fax: +44 1460 256 101

### Email us

[sales@golledge.com](mailto:sales@golledge.com)

### Our Worldwide Distributors

#### Belgium & Luxembourg

Alcom Electronics NV/SA



Email [info@alcom.be](mailto:info@alcom.be)  
Web [www.alcom.be](http://www.alcom.be)  
Tel +32 (0)3 458.30.33

#### China, Hong Kong - 中国 / 香港

Meiya China



Email [sales@meiyatech.com](mailto:sales@meiyatech.com)  
Web [www.meiyatech.com](http://www.meiyatech.com)  
Tel +86 755 2823 1923

#### France

Equipments Scientifique



Email [comp@es-france.com](mailto:comp@es-france.com)  
Web [www.es-france.com](http://www.es-france.com)  
Tel +33 1 47 95 99 89

#### Germany

MEV Elektronik Service GmbH



Email [info@mev-elektronik.com](mailto:info@mev-elektronik.com)  
Web [www.mev-elektronik.com](http://www.mev-elektronik.com)  
Tel +49 54 24 23 40-0

#### India

V5 Semiconductors



Email [sales@v5semiconductors.com](mailto:sales@v5semiconductors.com)  
Web [v5semiconductors.com](http://v5semiconductors.com)  
Tel +91-80-2661 0621

#### Israel

Phoenix Technologies Ltd



Email [sales@phnx.co.il](mailto:sales@phnx.co.il)  
Web [www.phnx.co.il](http://www.phnx.co.il)  
Tel +972 9 764 4800

#### Netherlands

Alcom Electronics BV



Email [info@alcom.nl](mailto:info@alcom.nl)  
Web [alcom.nl](http://alcom.nl)  
Tel +31 (0)10 288.25.00

#### Norway & Sweden

Link Nordic



Email [thomas.olaussen@linknordic.com](mailto:thomas.olaussen@linknordic.com)  
Web [linknordic.com](http://linknordic.com)  
Tel +47 92 23 37 54

#### Russia - Россия

EFO Ltd



Email [elena@efo.ru](mailto:elena@efo.ru)  
Web [www.golledge.ru](http://www.golledge.ru)  
Tel +7(812)327-8654

#### Spain & Portugal

R.C. Microelectronica, S.A.



Email [ventas@rcmicro.es](mailto:ventas@rcmicro.es)  
Web [www.rcmicro.es](http://www.rcmicro.es)  
Tel +34 93 260 21 66

Our customer feedback is testament to our quality; "Never had such good service as this from anyone in 35 years of being in the industry, this is impressive and has really helped us out of a corner to keep the design flowing" Andy (Senior Design Engineer), "As always your support is state of the art" Nicoleta (Material Management), "Legendary work - as usual it has to be said" John (Operations).  
To take advantage of our highly praised service get in touch with us today.