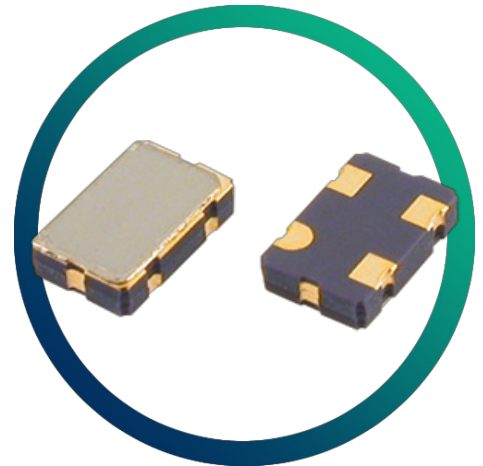


# GXO-U115L

3.3 & 5V 5x3mm

## Oscillator

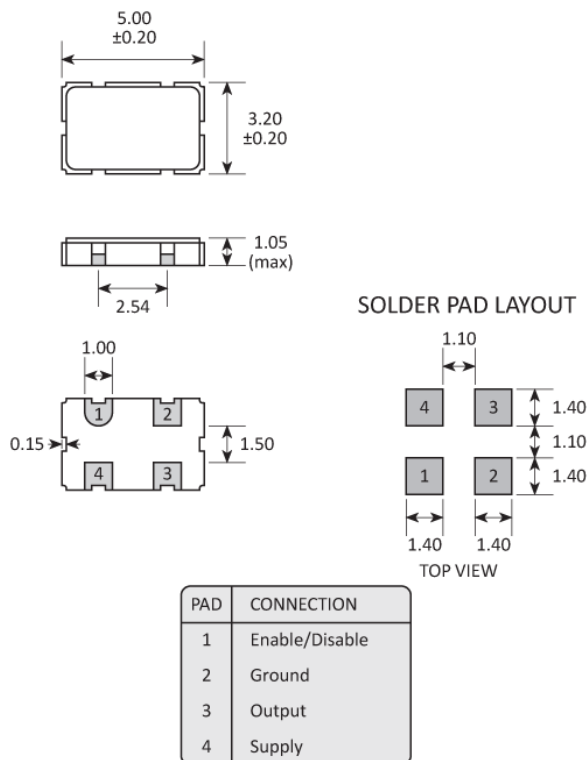
- High drive capability - up to 50pF
- Enable / disable tristate function
- Power saving function (variant L)



## CONFIGURABLE OPTIONS

Parameter	Option Code
-----------	-------------

## PACKAGE DRAWING



## ORDERING INFORMATION

To request a quotation for the GXO-U115L please use the configurable options form to choose the options you require and then submit your configured product to our team. Our expert advisers are always happy to help with your requirements and can be contacted on +44 1460 256 100 or at [sales@golledge.com](mailto:sales@golledge.com).

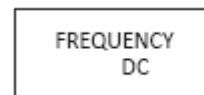
Following product selection you will be issued with a seven character Golledge part number. Your Golledge part number is the internationally accepted Golledge manufacturing part number (MPN) that should be used for all project documentation, including bills of materials (BoMs) and purchase orders.

If you have any queries regarding any of our documentation our dedicated sales team will be happy to help.

## ENABLE / DISABLE FUNCTION

Input (pad 1)	Output (pad 3)
Open	Enabled
'1' level	Enabled
'0' level	High Impedance

## MARKING

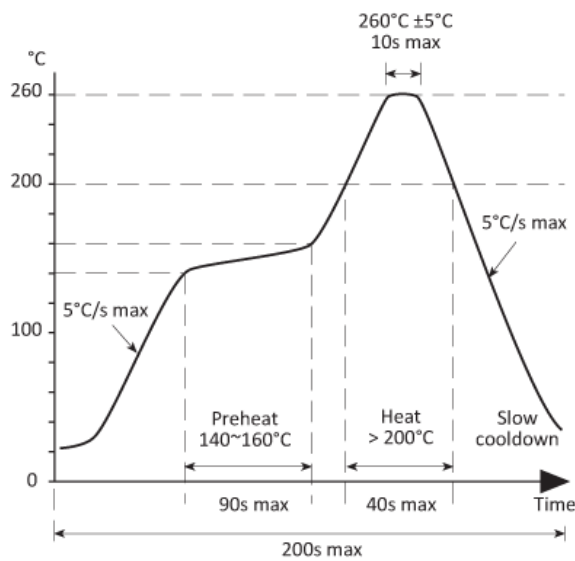


Marking type: Laser

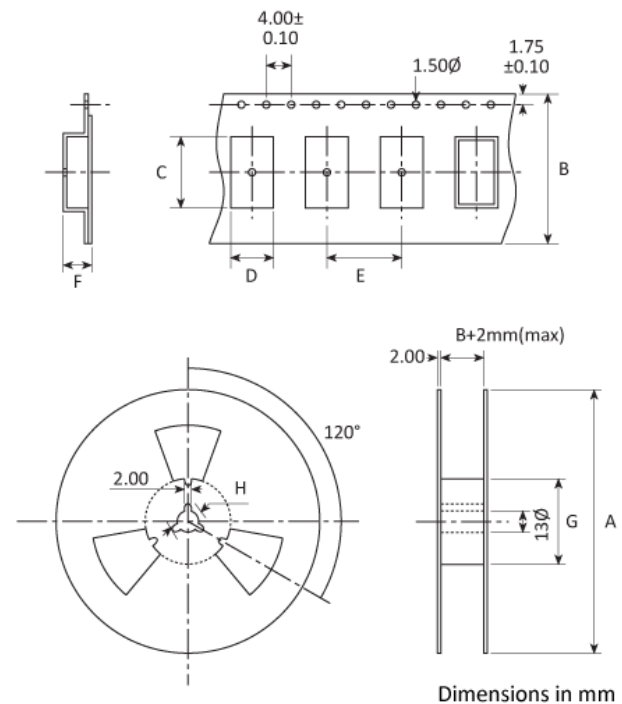
DC = Date Code in YM, eg. "GF" = Jun 2017

	A	B	C	D	E	F	G	H	J	K	L	M
Y	1	2	3	4	5	6	7	8	9	0		
M	Jan	Feb	Mar	Apr	May	Jun	Jul	Aug	Sep	Oct	Nov	Dec

## SOLDERING PROFILE



## TAPE & REEL SPECIFICATION



A:250 B:12 C:5.5 D:3.7 E:8 F:1.7 G:80 H:25

## HANDLING & STORAGE



Human Body Model (HBM) 1A (250V to &lt; 500V)



Moisture Sensitivity Level (MSL): 1

## CONSTRUCTION

Ceramic base with metal lid

## COMPLIANCE

---



Lead-free (< 0.1% by weight )



RoHS compliant with no exemptions.