

GXO-E72J

2.5 ~ 3.3V LV-PECL Oscillator

- Differential LV-PECL outputs
- Low phase jitter
- Enable / disable tristate function
- Fast rise / fall times
- Designed for SONET, SDH, IEEE1394
etc

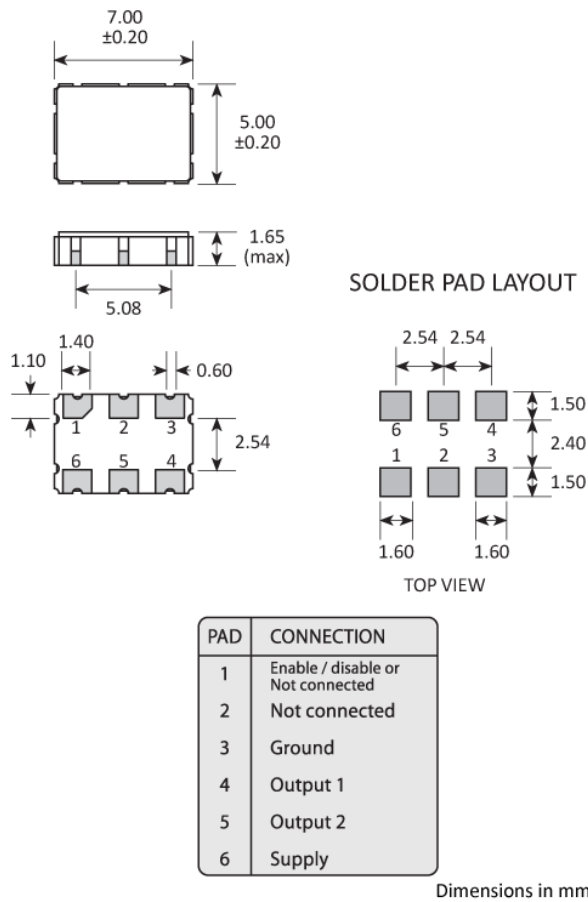


CONFIGURABLE OPTIONS

Parameter	Option Code
-----------	-------------

* Frequency stability is inclusive of calibration @ 25°C, operating temperature range, supply

PACKAGE DRAWING



ORDERING INFORMATION

To request a quotation for the GXO-E72J please use the configurable options form to choose the options you require and then submit your configured product to our team. Our expert advisers are always happy to help with your requirements and can be contacted on +44 1460 256 100 or at sales@golledge.com.

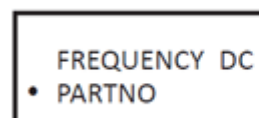
Following product selection you will be issued with a seven character Golledge part number. Your Golledge part number is the internationally accepted Golledge manufacturing part number (MPN) that should be used for all project documentation, including bills of materials (BoMs) and purchase orders.

If you have any queries regarding any of our documentation our dedicated sales team will be happy to help.

ENABLE / DISABLE FUNCTION

Input (pad 1)	Output 1 (pad 4)	Output 2 (pad 5)
Open	Enabled	Enabled
'1' level ($\geq 0.7 V_{DD}$)	Enabled	Enabled
'0' level ($\leq 0.3 V_{DD}$)	High Impedance	High Impedance

MARKING

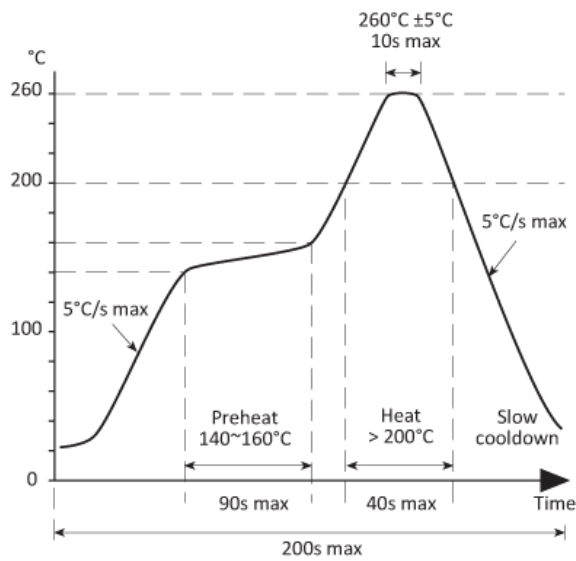


- Pin 1
- Marking type: Laser

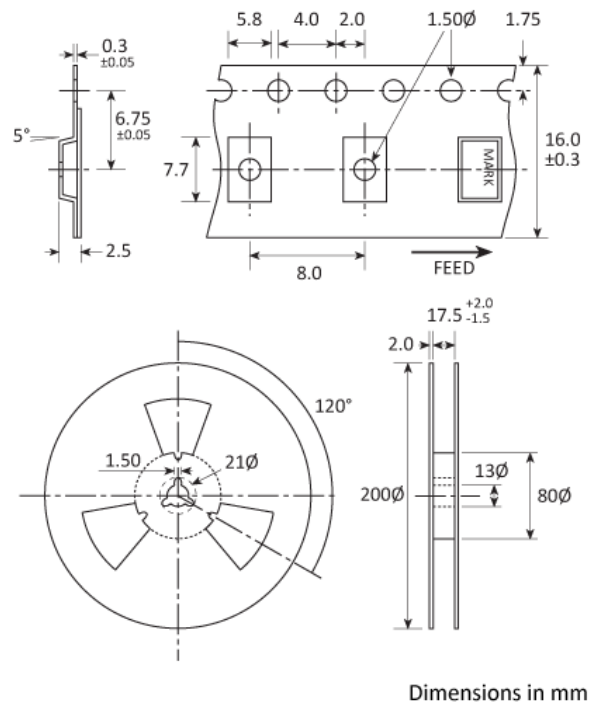
DC = Date Code in YM, eg. "GF" = Jun 2017

	A	B	C	D	E	F	G	H	J	K	L	M
Y	1	2	3	4	5	6	7	8	9	0		
M	Jan	Feb	Mar	Apr	May	Jun	Jul	Aug	Sep	Oct	Nov	Dec

SOLDERING PROFILE



TAPE & REEL SPECIFICATION



HANDLING & STORAGE



Human Body Model (HBM) 1A (250V to < 500V)



Moisture Sensitivity Level (MSL): 1

COMPLIANCE



Lead-free (< 0.1% by weight)



RoHS compliant with no exemptions.



Nominal Net Mass: 160mg

CONSTRUCTION

Ceramic body with gold-plated pads Metal lid, seam sealed