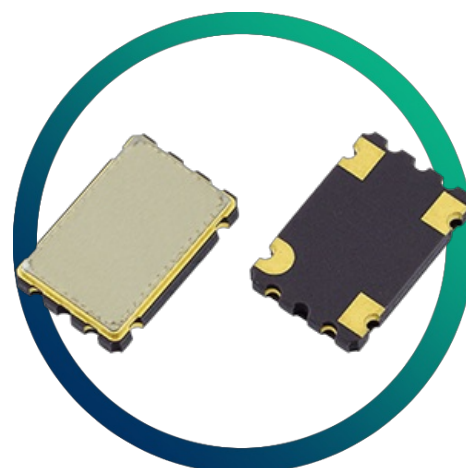


# GXO-7506L

## Ultra-Low Jitter Osc

- Excellent jitter & phase noise characteristics
- Custom frequencies and specifications available
- Enable / disable tristate function
- Small and medium quantities also available



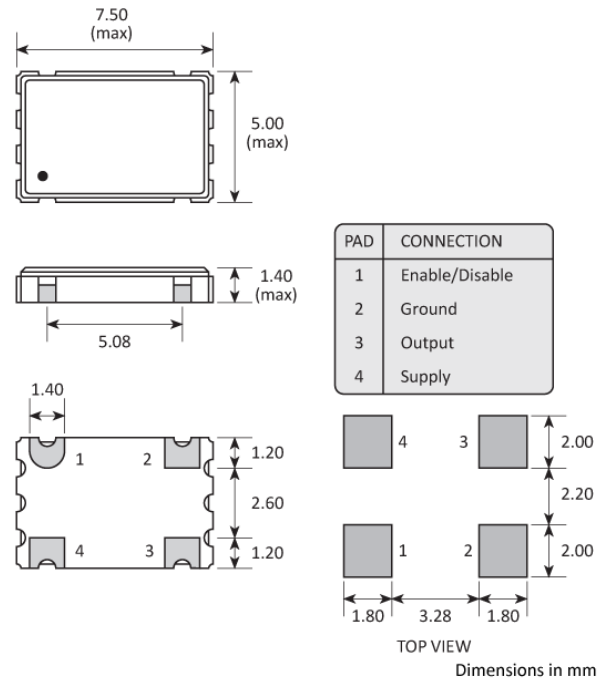
### CONFIGURABLE OPTIONS

Parameter	Option Code
Frequency	
Frequency stability*	
Any	
±25ppm	A
±50ppm	B

## SPECIFICATIONS

Frequency range	12.0 ~ 50.0MHz
Operating temperature range	-40 to +85 °C
Storage temperature range	-55 to +125 °C
Supply voltage (V <sub>DD</sub> )	+3.3V (±10%)
Supply current	20.0 ~ 50.0MHz : 20mA max
Logic levels	'0' level = 10%V <sub>DD</sub> max '1' level = 90%V <sub>DD</sub> min
Start up time	5ms max
Waveform symmetry	45:55 max @ 50%V <sub>DD</sub>
Driving ability	15pF CMOS
Rise / fall time	5ns max (20.0 ~ 50.0MHz)
Enable / disable function	Tristate (control via pad 1)
Phase jitter RMS	0.04ps typ (12kHz ~ 5.0MHz)
Phase noise (typ @ 24.576MHz, 3.3V)	-101dBc/Hz @ 10Hz -132dBc/Hz @ 100Hz -155dBc/Hz @ 1kHz -166dBc/Hz @ 10kHz -174dBc/Hz @ 100kHz -175dBc/Hz @ 1MHz -175dBc/Hz @ 5MHz

## PACKAGE DRAWING



## ORDERING INFORMATION

To request a quotation for the GXO-7506L please use the configurable options form to choose the options you require and then submit your configured product to our team. Our expert advisers are always happy to help with your requirements and can be contacted on +44 1460 256 100 or at [sales@golledge.com](mailto:sales@golledge.com).

Following product selection you will be issued with a seven character Golledge part number. Your Golledge part number is the internationally accepted Golledge manufacturing part number (MPN) that should be used for all project documentation, including bills of materials (BoMs) and purchase orders.

If you have any queries regarding any of our documentation our dedicated sales team will be happy to help.

## ENABLE / DISABLE FUNCTION

Input (pad 1)	Output (pad 3)
Open	Enabled
'1' level	Enabled
'0' level	High Impedance

## MARKING

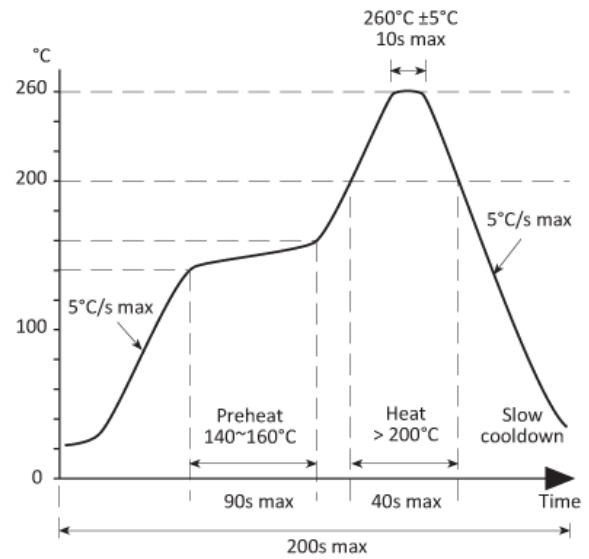
FREQUENCY DC  
PARTNO

- Pin 1
- Marking type: Laser

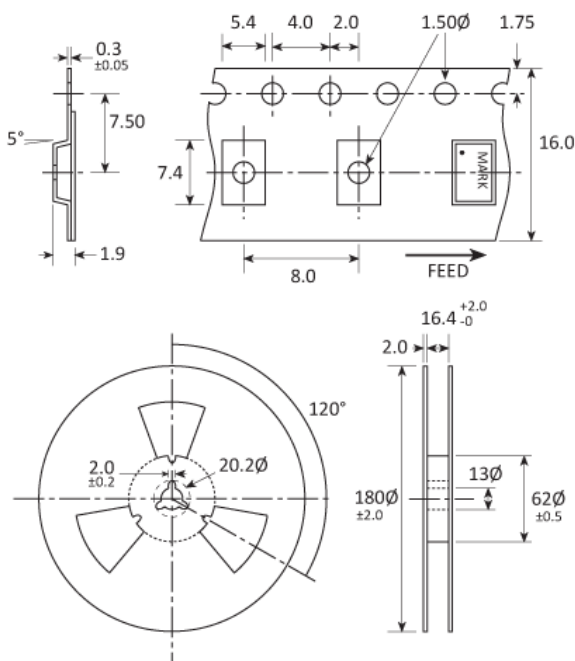
DC = Date Code in YM, eg. "GF" = Jun 2017

	A	B	C	D	E	F	G	H	J	K	L	M
Y	1	2	3	4	5	6	7	8	9	0		
M	Jan	Feb	Mar	Apr	May	Jun	Jul	Aug	Sep	Oct	Nov	Dec

## SOLDERING PROFILE



## TAPE & REEL SPECIFICATION



Dimensions in mm

## HANDLING & STORAGE



Human Body Model (HBM) 1A (250V to < 500V)



Moisture Sensitivity Level (MSL): 1

## CONSTRUCTION

---

Ceramic body with gold-plated pads Metal lid, seam sealed

## COMPLIANCE

---



Lead-free (< 0.1% by weight )



RoHS compliant with no exemptions.