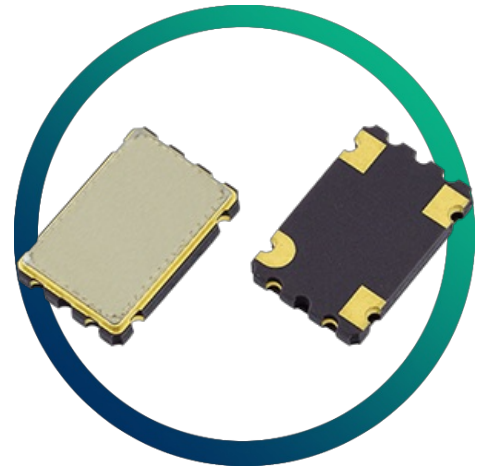


GXO-7506G

Ultra-Low Jitter Osc

- Excellent jitter & phase noise characteristics
- Custom frequencies and specifications available
- Enable / disable tristate function
- Small and medium quantities also available



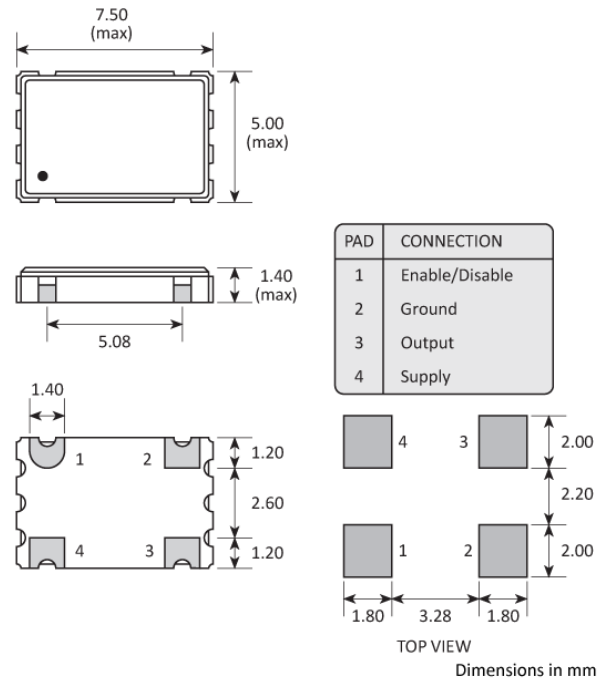
CONFIGURABLE OPTIONS

| Parameter | Option Code |
|----------------------|-------------|
| Frequency | |
| Frequency stability* | |
| Any | |
| ±25ppm | A |
| ±50ppm | B |

SPECIFICATIONS

| | |
|-------------------------------------|---|
| Frequency range | 12.0 ~ 50.0MHz |
| Operating temperature range | -40 to +85 °C |
| Storage temperature range | -55 to +125 °C |
| Supply voltage (V _{DD}) | +1.8V (±5%) |
| Supply current (mA max) | 20.0 ~ 50.0MHz 7 12 20 |
| Logic levels | '0' level = 20%V _{DD} max '1' level = 80%V _{DD} min |
| Start up time | 10ms max |
| Waveform symmetry | 40:60 max @ 50%V _{DD} |
| Driving ability | 15pF CMOS |
| Rise / fall time | 5ns max (20.0 ~ 50.0MHz) |
| Enable / disable function | Tristate (control via pad 1) |
| Phase jitter RMS | 0.04ps typ (12kHz ~ 5.0MHz) |
| Phase noise (typ @ 24.576MHz, 3.3V) | -101dBc/Hz @ 10Hz -132dBc/Hz @ 100Hz -155dBc/Hz @ 1kHz -166dBc/Hz @ 10kHz -174dBc/Hz @ 100kHz -175dBc/Hz @ 1MHz -175dBc/Hz @ 5MHz |

PACKAGE DRAWING



ORDERING INFORMATION

To request a quotation for the GXO-7506G please use the configurable options form to choose the options you require and then submit your configured product to our team. Our expert advisers are always happy to help with your requirements and can be contacted on +44 1460 256 100 or at sales@golledge.com.

Following product selection you will be issued with a seven character Golledge part number. Your Golledge part number is the internationally accepted Golledge manufacturing part number (MPN) that should be used for all project documentation, including bills of materials (BoMs) and purchase orders.

If you have any queries regarding any of our documentation our dedicated sales team will be happy to help.

ENABLE / DISABLE FUNCTION

| Input (pad 1) | Output (pad 3) |
|---------------|----------------|
| Open | Enabled |
| '1' level | Enabled |
| '0' level | High Impedance |

MARKING

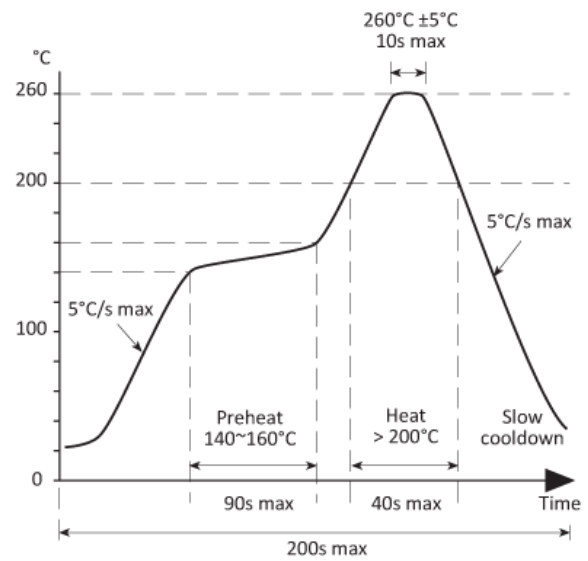
FREQUENCY DC
PARTNO

- Pin 1
- Marking type: Laser

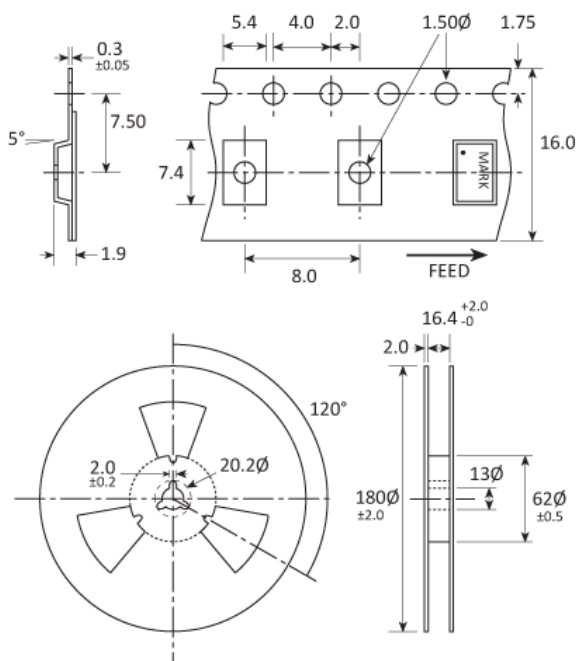
DC = Date Code in YM, eg. "GF" = Jun 2017

| | A | B | C | D | E | F | G | H | J | K | L | M |
|---|-----|-----|-----|-----|-----|-----|-----|-----|-----|-----|-----|-----|
| Y | 1 | 2 | 3 | 4 | 5 | 6 | 7 | 8 | 9 | 0 | | |
| M | Jan | Feb | Mar | Apr | May | Jun | Jul | Aug | Sep | Oct | Nov | Dec |

SOLDERING PROFILE



TAPE & REEL SPECIFICATION



Dimensions in mm

HANDLING & STORAGE



Human Body Model (HBM) 1A (250V to < 500V)



Moisture Sensitivity Level (MSL): 1

CONSTRUCTION

Ceramic body with gold-plated pads Metal lid, seam sealed

COMPLIANCE



Lead-free (< 0.1% by weight)



RoHS compliant with no exemptions.