

# GXO-3200G

## 2520 Tight stability / high freq osc

- High precision with tight stability options
- Wide operating temperature ranges
- High frequency fundamental - no multiplier
- Small and medium quantities also available
- Enable / disable tristate function

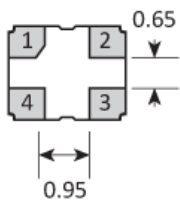
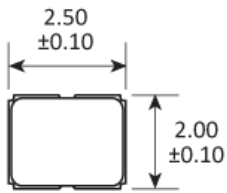


### CONFIGURABLE OPTIONS

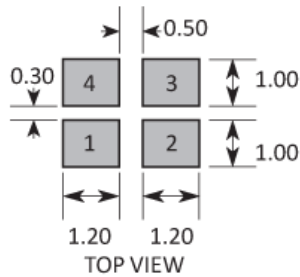
Parameter	Option Code
-----------	-------------

\* Frequency stability is inclusive of calibration @ 25°C, operating temperature range, supply voltage change, load change, shock and vibration. Option H inclusive of calibration @ 25°C and operating temperature range only.

**PACKAGE DRAWING**



**SOLDER PAD LAYOUT**



PAD	CONNECTION
1	Enable/Disable
2	Ground
3	Output
4	Supply

Dimensions in mm

**ORDERING INFORMATION**

To request a quotation for the GXO-3200G please use the configurable options form to choose the options you require and then submit your configured product to our team. Our expert advisers are always happy to help with your requirements and can be contacted on +44 1460 256 100 or at [sales@golledge.com](mailto:sales@golledge.com).

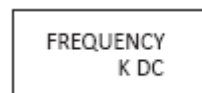
Following product selection you will be issued with a seven character Golledge part number. Your Golledge part number is the internationally accepted Golledge manufacturing part number (MPN) that should be used for all project documentation, including bills of materials (BoMs) and purchase orders.

If you have any queries regarding any of our documentation our dedicated sales team will be happy to help.

**ENABLE / DISABLE FUNCTION**

Input (pad 1)	Output (pad 3)
Open	Enabled
'1' level	Enabled
'0' level	High Impedance

**MARKING**

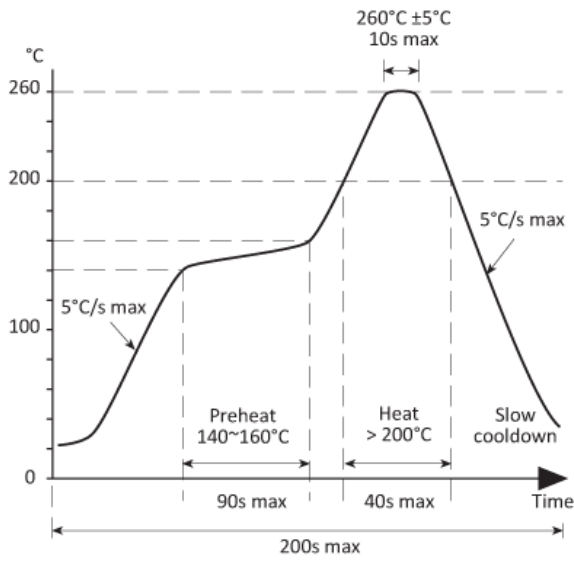


Marking type: Laser

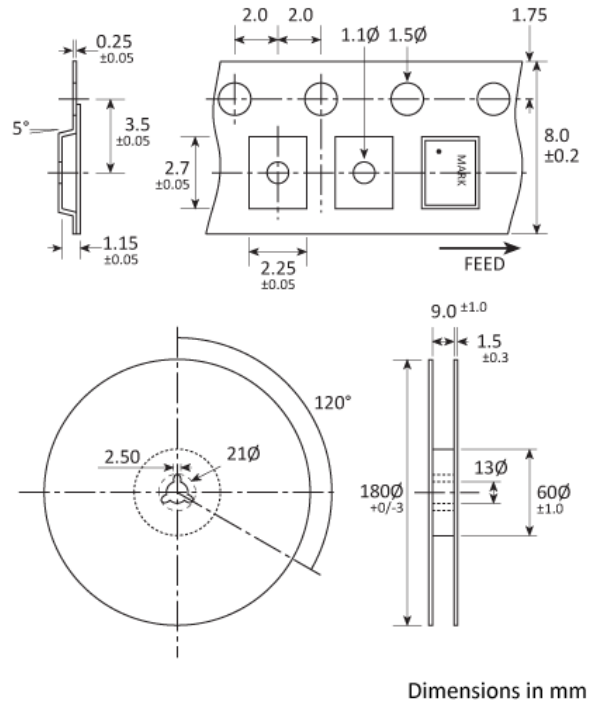
DC = Date Code in YM, eg. "GF" = Jun 2017

	A	B	C	D	E	F	G	H	J	K	L	M
Y	1	2	3	4	5	6	7	8	9	0		
M	Jan	Feb	Mar	Apr	May	Jun	Jul	Aug	Sep	Oct	Nov	Dec


**SOLDERING PROFILE**



**TAPE & REEL SPECIFICATION**





**HANDLING & STORAGE**

 Human Body Model (HBM) 1A (250V to < 500V)

 Moisture Sensitivity Level (MSL): 1

**COMPLIANCE**

 Lead-free (< 0.1% by weight)

 RoHS compliant with no exemptions.

**CONSTRUCTION**

Ceramic body with gold-plated pads Metal lid, seam sealed