

GWX-1610

2012 Package 32.768kHz Watch Crystal

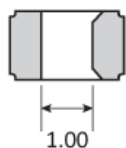
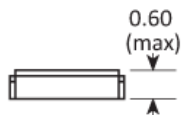
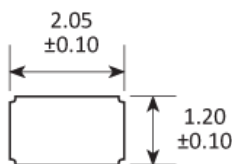
- Competitive pricing for volume applications
- Ultra low profile - 0.6mm high
- Light weight miniature package
- Vacuum sealed for high stability



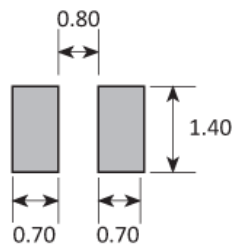
CONFIGURABLE OPTIONS

Parameter	Option Code
-----------	-------------

PACKAGE DRAWING



SOLDER PAD LAYOUT



TOP VIEW

Dimensions in mm

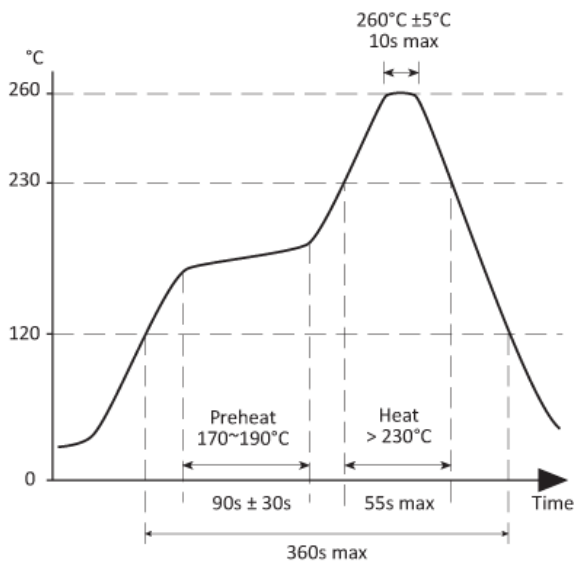
ORDERING INFORMATION

To request a quotation for the GWX-1610 please use the configurable options form to choose the options you require and then submit your configured product to our team. Our expert advisers are always happy to help with your requirements and can be contacted on +44 1460 256 100 or at sales@golledge.com.

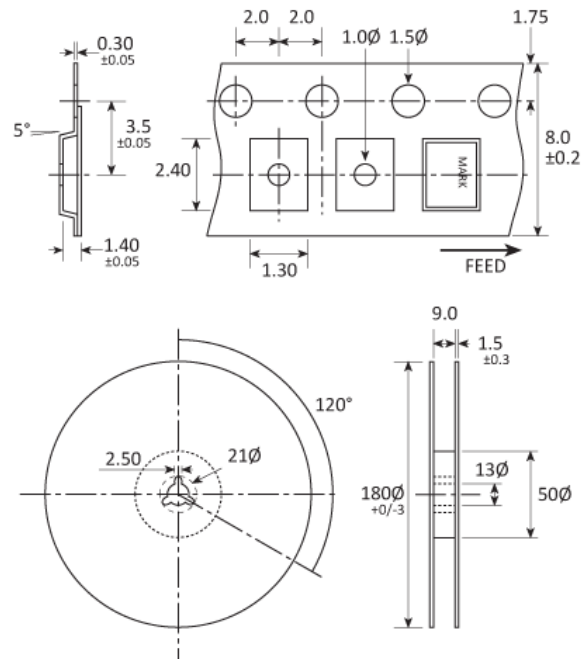
Following product selection you will be issued with a seven character Golledge part number. Your Golledge part number is the internationally accepted Golledge manufacturing part number (MPN) that should be used for all project documentation, including bills of materials (BoMs) and purchase orders.

If you have any queries regarding any of our documentation our dedicated sales team will be happy to help.

SOLDERING PROFILE



TAPE & REEL SPECIFICATION



Dimensions in mm

5k pcs per reel is the standard T&R pack size for this product.
Partial quantities may be supplied on tape (no reel), or in bulk.

HANDLING & STORAGE



Human Body Model (HBM) 1A (250V to < 500V)



Moisture Sensitivity Level (MSL): 1

COMPLIANCE



Lead-free (< 0.1% by weight)



RoHS compliant with no exemptions.

CONSTRUCTION

Ceramic body with gold-plated pads Metal lid, vacuum sealed