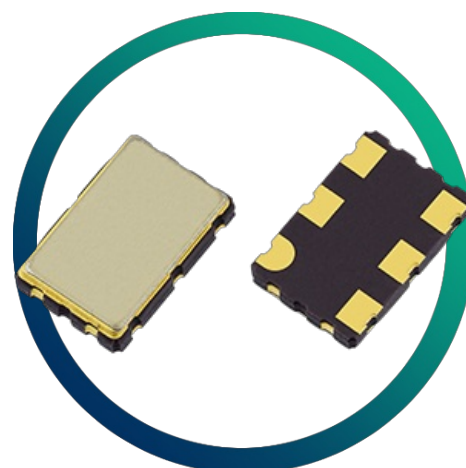


GVXO-52

SM VCXO Complementary

LVDS

- Frequencies up to 800MHz
- Complementary LVDS outputs
- Fast rise / fall times
- Enable / disable tristate function



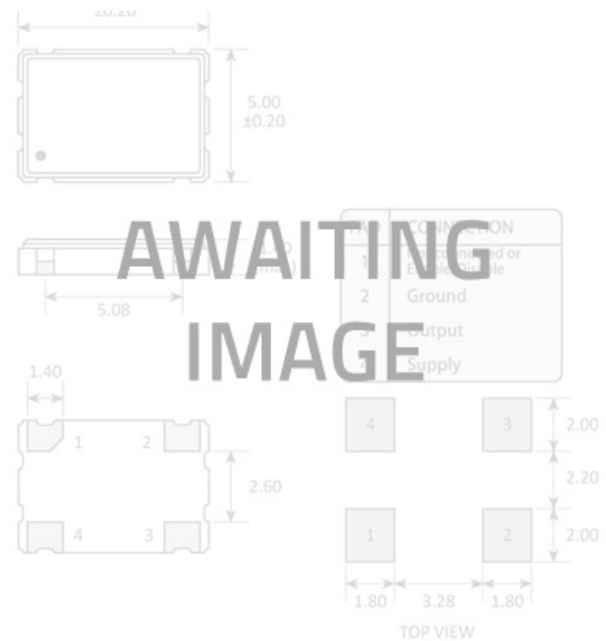
CONFIGURABLE OPTIONS

Parameter	Option Code
Frequency	
Frequency pullability	
±150ppm min	
Frequency stability * see note below	
Any	
±50ppm max	B
±25ppm max	C
Operating temperature range	
Any	
-10 to +70°C	
-40 to +85°C	I

SPECIFICATIONS

Frequency range	12.0 ~ 800MHz
Dimensions	7.5 x 5.2 x 1.6mm
Voltage control (V_{CTL})	+1.65V \pm 1.50V, 10% linearity
Storage temperature range	-40 to +85 °C
Supply voltage (V_{DD})	+3.3V (\pm 5%)
Supply current	65mA max (\leq 100MHz) 120mA max ($>$ 100 ~ 800MHz)
Output	LVDS
Offset voltage	1.25V typ
Differential output voltage	0.33V typ
Output load	100 Ω
Logic levels	'0' level = +1.7V max '1' level = +2.2V min
Waveform symmetry	40:60 max @ 50% V_{P-P}
Rise / fall time	1.0ns max (20% ~ 80% V_{P-P})
Phase jitter	5ps max (12kHz~20MHz)

PACKAGE DRAWING



ORDERING INFORMATION

To request a quotation for the GVXO-52 please use the configurable options form to choose the options you require and then submit your configured product to our team. Our expert advisers are always happy to help with your requirements and can be contacted on +44 1460 256 100 or at sales@golledge.com.

Following product selection you will be issued with a seven character Golledge part number. Your Golledge part number is the internationally accepted Golledge manufacturing part number (MPN) that should be used for all project documentation, including bills of materials (BoMs) and purchase orders.

If you have any queries regarding any of our documentation our dedicated sales team will be happy to help.

ENABLE / DISABLE FUNCTION

Input (pad 2)	Output 1 (pad 4)	Output 2 (pad 5)
Open	Active	Active
'1' level V_{IH}	High Z	High Z
'0' level V_{IL}	Active	Active

'0' level = $V_{IL} \leq +1.70V$, '1' level = $V_{IH} \geq +2.20V$

MARKING

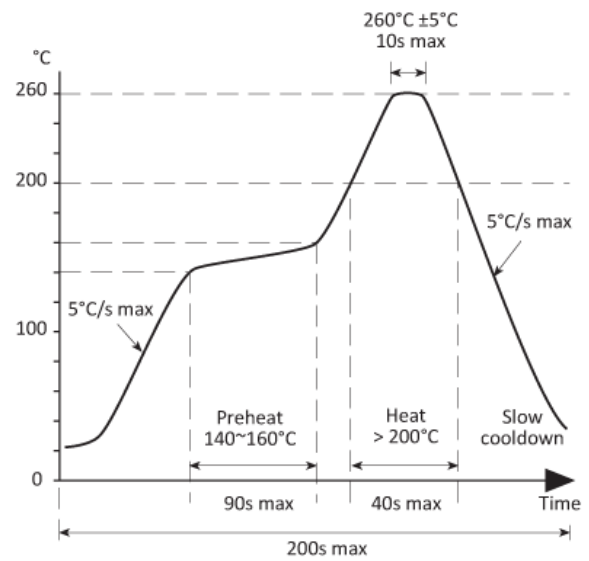
GOLLEDGE
FREQUENCY
• PARTNO DC

- Pin 1
Marking type: Laser

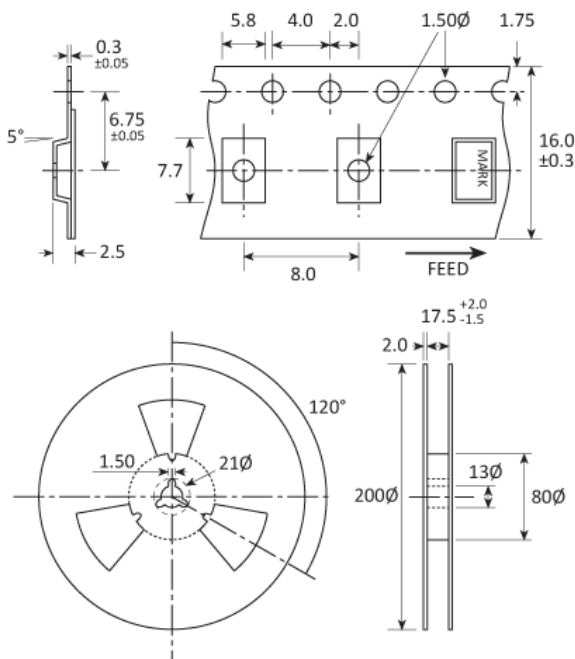
DC = Date Code in YM, eg. "GF" = Jun 2017

	A	B	C	D	E	F	G	H	J	K	L	M
Y	1	2	3	4	5	6	7	8	9	0		
M	Jan	Feb	Mar	Apr	May	Jun	Jul	Aug	Sep	Oct	Nov	Dec

SOLDERING PROFILE



TAPE & REEL SPECIFICATION



Dimensions in mm

HANDLING & STORAGE



Human Body Model (HBM) 1A (250V to < 500V)



Moisture Sensitivity Level (MSL): 1

CONSTRUCTION

Ceramic body with gold-plated pads Metal lid, seam sealed

COMPLIANCE



Lead-free (< 0.1% by weight)



RoHS compliant with no exemptions.