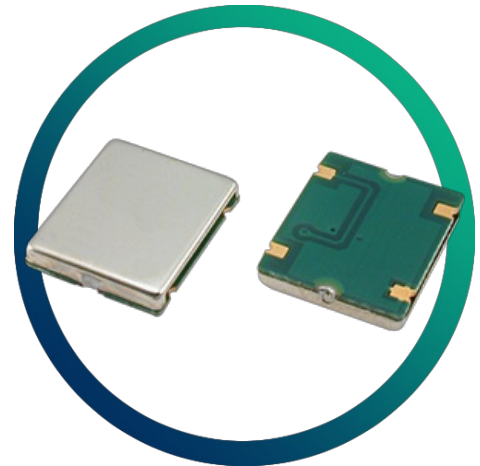


# GTXO-570A

## 5V SM VCTCXO Wide Pulling Range

- Wide voltage control range
- 2.0mm maximum height
- Good frequency stability



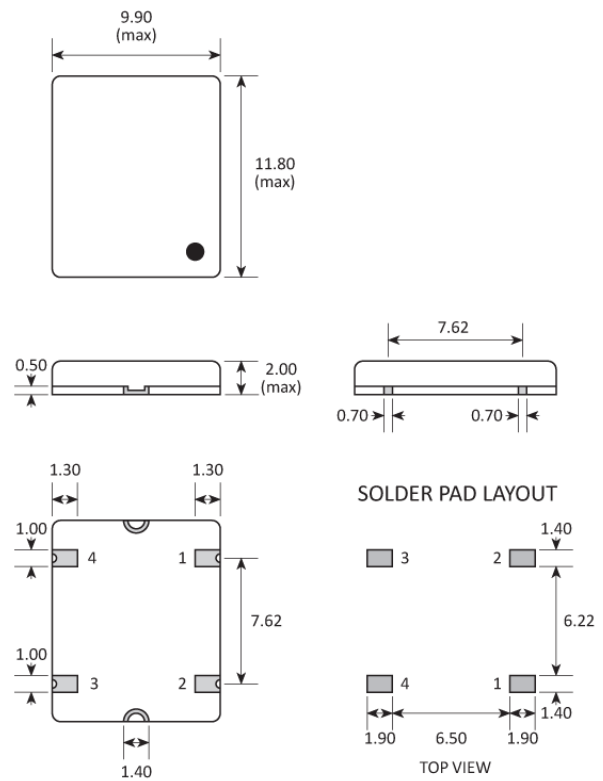
### CONFIGURABLE OPTIONS

Parameter	Option Code
Frequency	
Frequency stability	
±2.5ppm	
Operating temperature range	
-30 to +75 °C	
Supply voltage (V <sub>DD</sub> )	
Any	
+5.0V (±5%)	
+3.3V (±5%)	M
+3.0V (±5%)	L
Output waveform	
Any	
Clipped sine, 0.7V p-p, Test load 10kΩ // 10pF	H
HCMOS / 5 LSTTL	
Frequency adjustment	
±20.0ppm min via control voltage	

## SPECIFICATIONS

Package style	4 pads, no trimmer
Frequency range	9.60 ~ 50.0MHz
Dimensions	11.4 x 9.6 x 2.0mm
Storage temperature range	-30 to +85 °C
Frequency vs supply voltage	±0.3ppm max ( $V_{DD} \pm 5\%$ )
Ageing (max)	±1.0ppm per year
Supply current	2.0mA max (Sine output) 15.0mA max (HCMOS output)
Control voltage range	+2.5V ±2.0V (5.0V supply) +1.65V ±1.35V (3.3V supply) +1.5V ±1.0V (3.0V supply)
Startup time	4ms max
Preset frequency	±0.5ppm / +25 °C ±2 °C

## PACKAGE DRAWING



PAD	CONNECTION
1	Freq adjustment
2	Ground
3	Output
4	Supply

Dimensions in mm

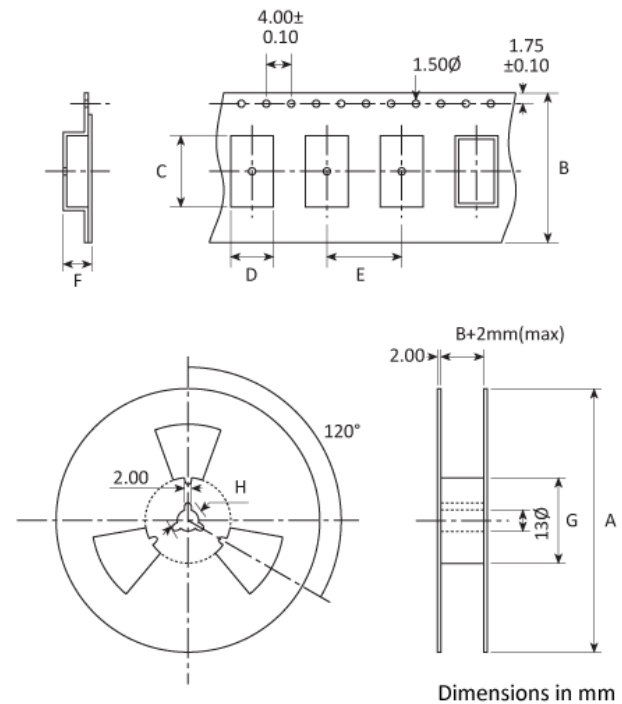
## ORDERING INFORMATION

To request a quotation for the GTXO-570A please use the configurable options form to choose the options you require and then submit your configured product to our team. Our expert advisers are always happy to help with your requirements and can be contacted on +44 1460 256 100 or at [sales@golledge.com](mailto:sales@golledge.com).

Following product selection you will be issued with a seven character Golledge part number. Your Golledge part number is the internationally accepted Golledge manufacturing part number (MPN) that should be used for all project documentation, including bills of materials (BoMs) and purchase orders.

If you have any queries regarding any of our documentation our dedicated sales team will be happy to help.

## TAPE & REEL SPECIFICATION



A:330 B:24 C:14 D:11 E:12 F:2.7 G:80 H:21

## HANDLING & STORAGE



Human Body Model (HBM) 1A (250V to < 500V)



Moisture Sensitivity Level (MSL): 1

## COMPLIANCE



RoHS compliant with no exemptions.



Nominal Net Mass: 440mg

## CONSTRUCTION

PCB base with metal lid