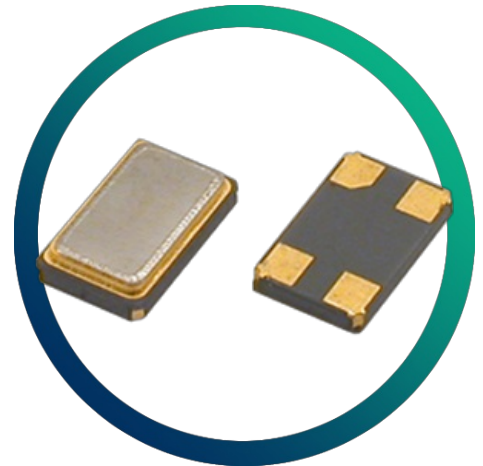


GSX-433

SM Crystal for Bluetooth / Wireless

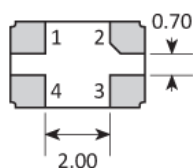
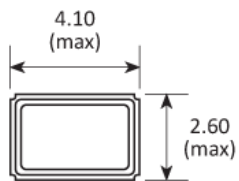
- Good frequency perturbation
- Metal lid can be grounded to minimise EMI
- Seam sealed for excellent long-term stability
- Ultra-miniature for maximum space saving
- Ideal for Bluetooth / Wireless applications



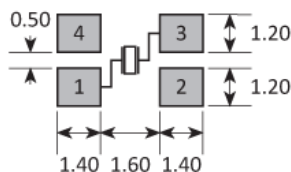
CONFIGURABLE OPTIONS

Parameter	Option Code
-----------	-------------

PACKAGE DRAWING



SOLDER PAD LAYOUT



TOP VIEW

PAD	CONNECTION
1	Crystal
2	Ground & lid
3	Crystal
4	Ground & lid

Dimensions in mm

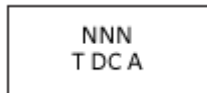
ORDERING INFORMATION

To request a quotation for the GSX-433 please use the configurable options form to choose the options you require and then submit your configured product to our team. Our expert advisers are always happy to help with your requirements and can be contacted on +44 1460 256 100 or at sales@golledge.com.

Following product selection you will be issued with a seven character Golledge part number. Your Golledge part number is the internationally accepted Golledge manufacturing part number (MPN) that should be used for all project documentation, including bills of materials (BoMs) and purchase orders.

If you have any queries regarding any of our documentation our dedicated sales team will be happy to help.

MARKING



Marking type: Laser
NNN = Part ID code
A = Optional factory mark

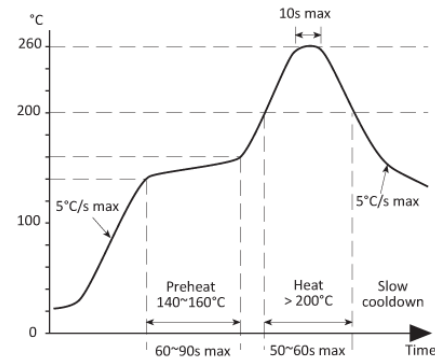
DC = Date code in YW

Year	2013	2014	2015	2016
	2017	2018	2019	2020
Code	Z	z	⌒	⌒

Week codes:
A ~ Z: weeks 1 to 26
a ~ z: weeks 27 to 52

Example: "zC" = 2018 week 3

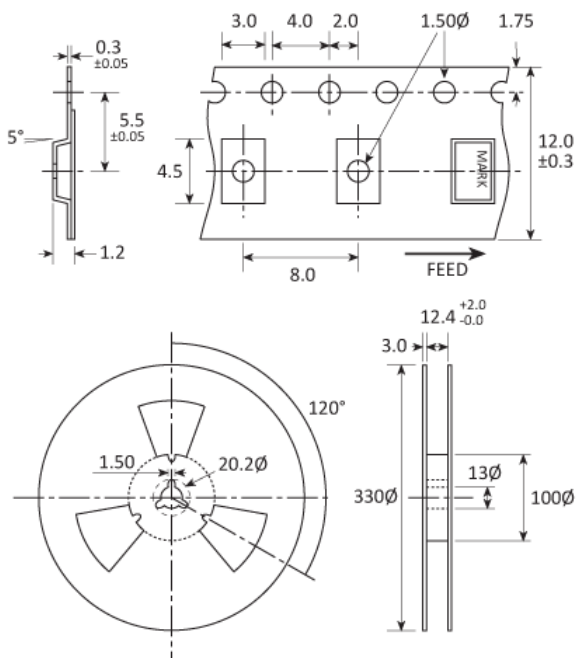
SOLDERING PROFILE



Solderability limits:

260°C max x 10sec max x 2 max

TAPE & REEL SPECIFICATION



Dimensions in mm

HANDLING & STORAGE



Human Body Model (HBM) 1A (250V to < 500V)



Moisture Sensitivity Level (MSL): 1

CONSTRUCTION

Ceramic body with gold-plated pads Metal lid, seam sealed

COMPLIANCE



Lead-free (< 0.1% by weight)



RoHS compliant with no exemptions.