

# GRX-320

## Automotive Crystal (AEC-Q200)

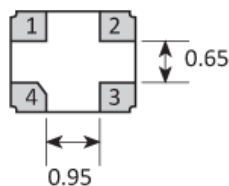
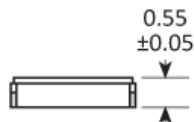
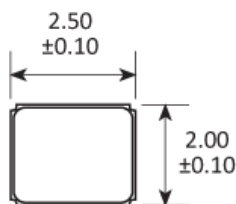
- AEC-Q200 qualified for automotive applications
- Vacuum seal for excellent long-term stability
- High reliability at low cost
- Metal lid can be grounded to minimise EMI



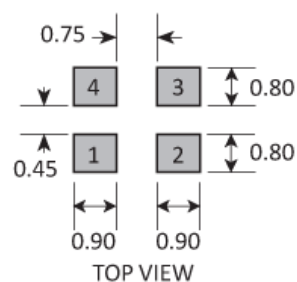
### CONFIGURABLE OPTIONS

| Parameter | Option Code |
|-----------|-------------|
|-----------|-------------|

### PACKAGE DRAWING



### SOLDER PAD LAYOUT



| PAD | CONNECTION   |
|-----|--------------|
| 1   | Crystal      |
| 2   | Ground & lid |
| 3   | Crystal      |
| 4   | Ground & lid |

Dimensions in mm

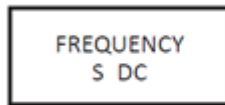
### ORDERING INFORMATION

To request a quotation for the GRX-320 please use the configurable options form to choose the options you require and then submit your configured product to our team. Our expert advisers are always happy to help with your requirements and can be contacted on +44 1460 256 100 or at [sales@golledge.com](mailto:sales@golledge.com).

Following product selection you will be issued with a seven character Golledge part number. Your Golledge part number is the internationally accepted Golledge manufacturing part number (MPN) that should be used for all project documentation, including bills of materials (BoMs) and purchase orders.

If you have any queries regarding any of our documentation our dedicated sales team will be happy to help.

## MARKING

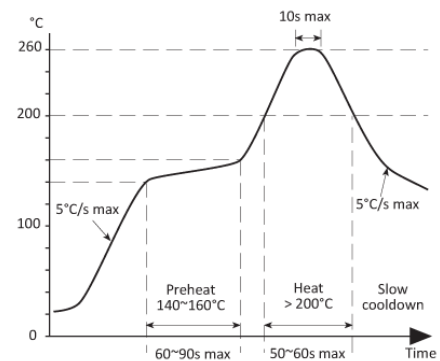


Marking type: Laser

DC = Date Code in YM, eg. "GF" = Jun 2017

|   | A   | B   | C   | D   | E   | F   | G   | H   | J   | K   | L   | M   |
|---|-----|-----|-----|-----|-----|-----|-----|-----|-----|-----|-----|-----|
| Y | 1   | 2   | 3   | 4   | 5   | 6   | 7   | 8   | 9   | 0   |     |     |
| M | Jan | Feb | Mar | Apr | May | Jun | Jul | Aug | Sep | Oct | Nov | Dec |

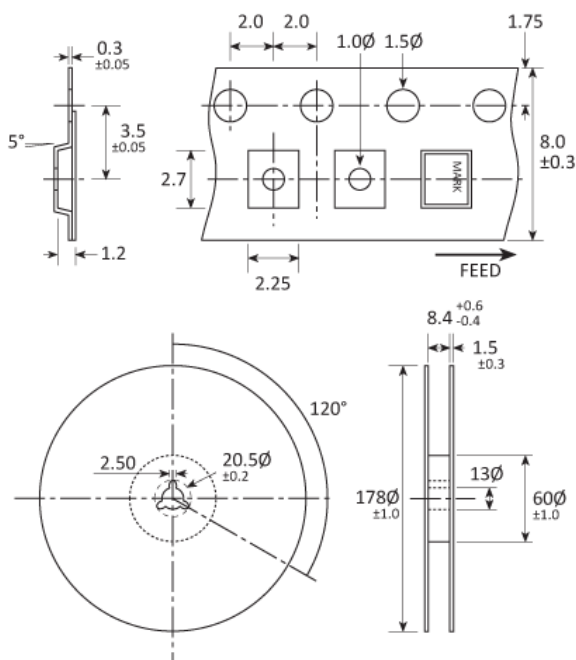
## SOLDERING PROFILE



Solderability limits:

260°C max x 10sec max x 2 max

## TAPE & REEL SPECIFICATION



Dimensions in mm

## HANDLING & STORAGE



Human Body Model (HBM) 1A (250V to < 500V)



Moisture Sensitivity Level (MSL): 1



General Shelf Life statement applies. [See our statement.](#)

## CONSTRUCTION

Ceramic body with gold-plated pads, Metal lid, seam sealed

## COMPLIANCE



Lead-free (< 0.1% by weight)



RoHS compliant with no exemptions.