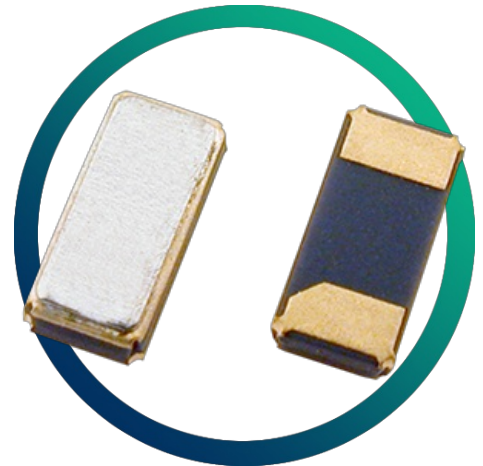


# GRX-315

## Automotive Watch Crystal (AEC-Q200)

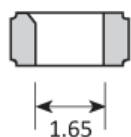
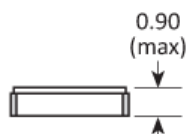
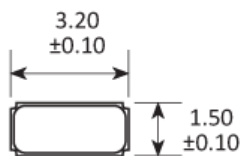
- AEC-Q200 automotive qualified
- Miniature ceramic package with metal lid
- Vacuum seal for excellent long-term stability
- Low cost for volume applications
- Low power consumption



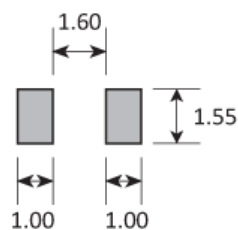
### CONFIGURABLE OPTIONS

Parameter	Option Code
-----------	-------------

### PACKAGE DRAWING



### SOLDER PAD LAYOUT



TOP VIEW

Dimensions in mm

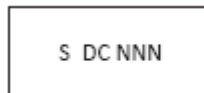
### ORDERING INFORMATION

To request a quotation for the GRX-315 please use the configurable options form to choose the options you require and then submit your configured product to our team. Our expert advisers are always happy to help with your requirements and can be contacted on +44 1460 256 100 or at [sales@golledge.com](mailto:sales@golledge.com).

Following product selection you will be issued with a seven character Golledge part number. Your Golledge part number is the internationally accepted Golledge manufacturing part number (MPN) that should be used for all project documentation, including bills of materials (BoMs) and purchase orders.

If you have any queries regarding any of our documentation our dedicated sales team will be happy to help.

## MARKING

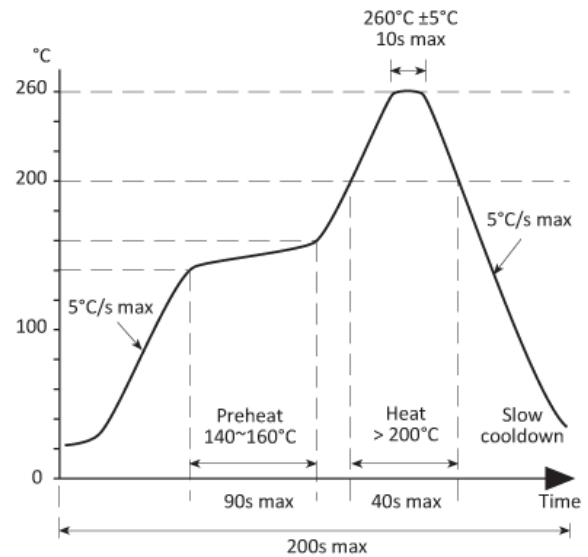


Marking type: Laser  
DC = Date code  
NNN = Lot number

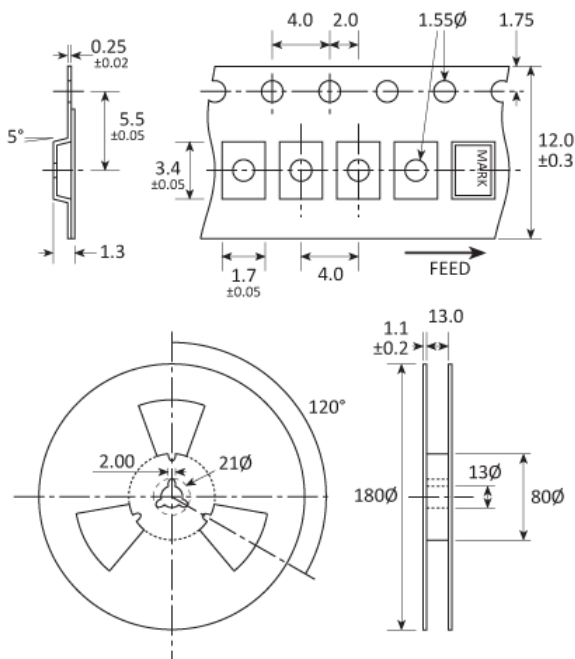
DC = Date Code in YM, eg. "GF" = Jun 2017

	A	B	C	D	E	F	G	H	J	K	L	M
Y	1	2	3	4	5	6	7	8	9	0		
M	Jan	Feb	Mar	Apr	May	Jun	Jul	Aug	Sep	Oct	Nov	Dec

## SOLDERING PROFILE



## TAPE & REEL SPECIFICATION



Dimensions in mm

## HANDLING & STORAGE



Human Body Model (HBM) 1A (250V to < 500V)



Moisture Sensitivity Level (MSL): 1



General Shelf Life statement applies. [See our statement.](#)

## CONSTRUCTION

---

Ceramic body with gold-plated pads, Metal lid, seam sealed

## COMPLIANCE

---



Lead-free (< 0.1% by weight )



RoHS compliant with no exemptions.