

SAW Filter 1561.0MHz
Part No: MP07412

Model: TA1520A
Rev No: 1

A. MAXIMUM RATING:

Electrostatic Sensitive Device (ESD)

1. Input Power Level: 10dBm
2. DC Voltage: 3V
3. Operating Temperature: -40°C to +85°C
4. Storage Temperature: -50°C to +95°C

B. ELECTRICAL CHARACTERISTICS:

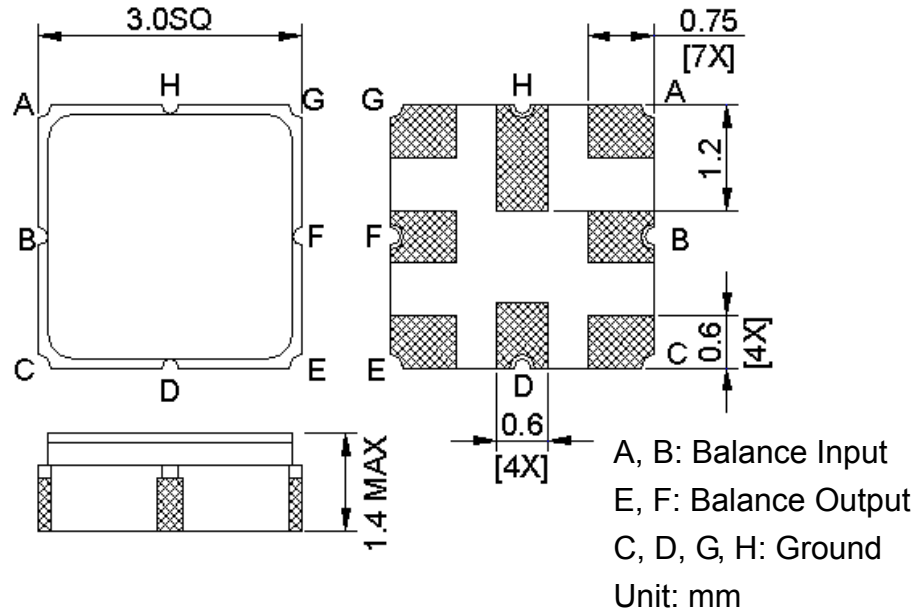
1. Terminating source impedance (differential): $Z_S = 200\Omega // 20nH$
2. Terminating load impedance (differential): $Z_L = 200\Omega // 20nH$

Item	Unit	Min.	Typ.	Max.	Note
Center Frequency Fc	MHz	-	1561	-	-
Bandwidth at -3dB	MHz	-	59	-	-
Insertion Loss in 1551 ~ 1571MHz	dB	-	2.7	4	-
Amplitude ripple (1551 ~ 1571MHz)	dB	-	0.4	2	-
Group delay variation (1551 ~ 1571MHz)	ns	-	6	15	-
I/O Return Loss (1551 ~ 1571MHz)	dB	8	10	-	-
Attenuation (reference level from 0dB)					
10 ~ 1465MHz	dB	43	52	-	-
1700 ~ 2400MHz	dB	43	57	-	-
Temperature Coefficient of Frequency	ppm/°C	-	-36	-	-

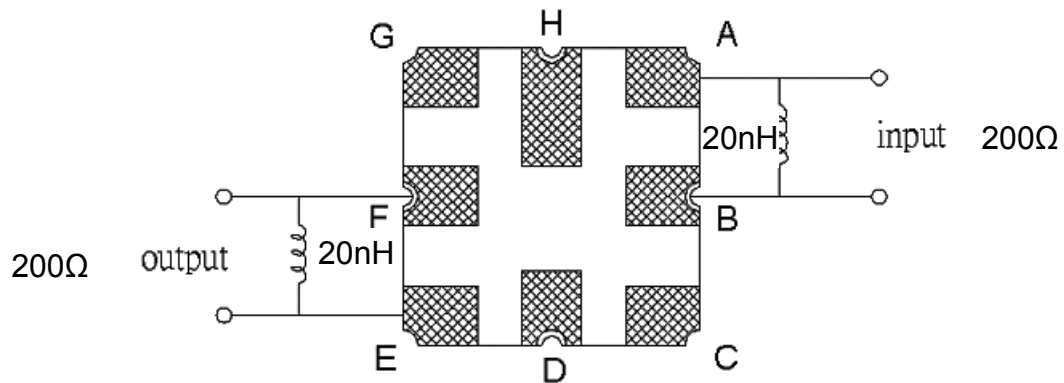
SAW Filter 1561.0MHz
Part No: MP07412

Model: TA1520A
Rev No: 1

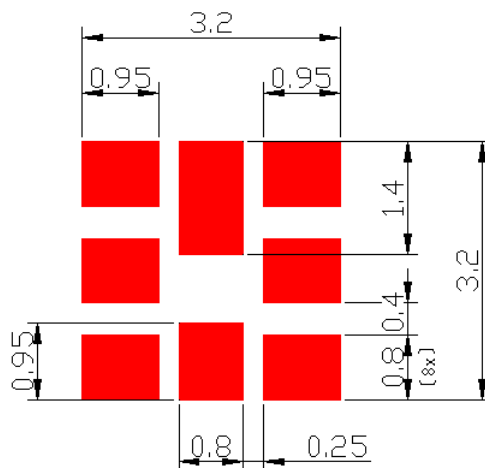
C. OUTLINE DRAWING:



D. MEASUREMENT CIRCUIT:



E. PCB FOOTPRINT:



SAW Filter 1561.0MHz
Part No: MP07412

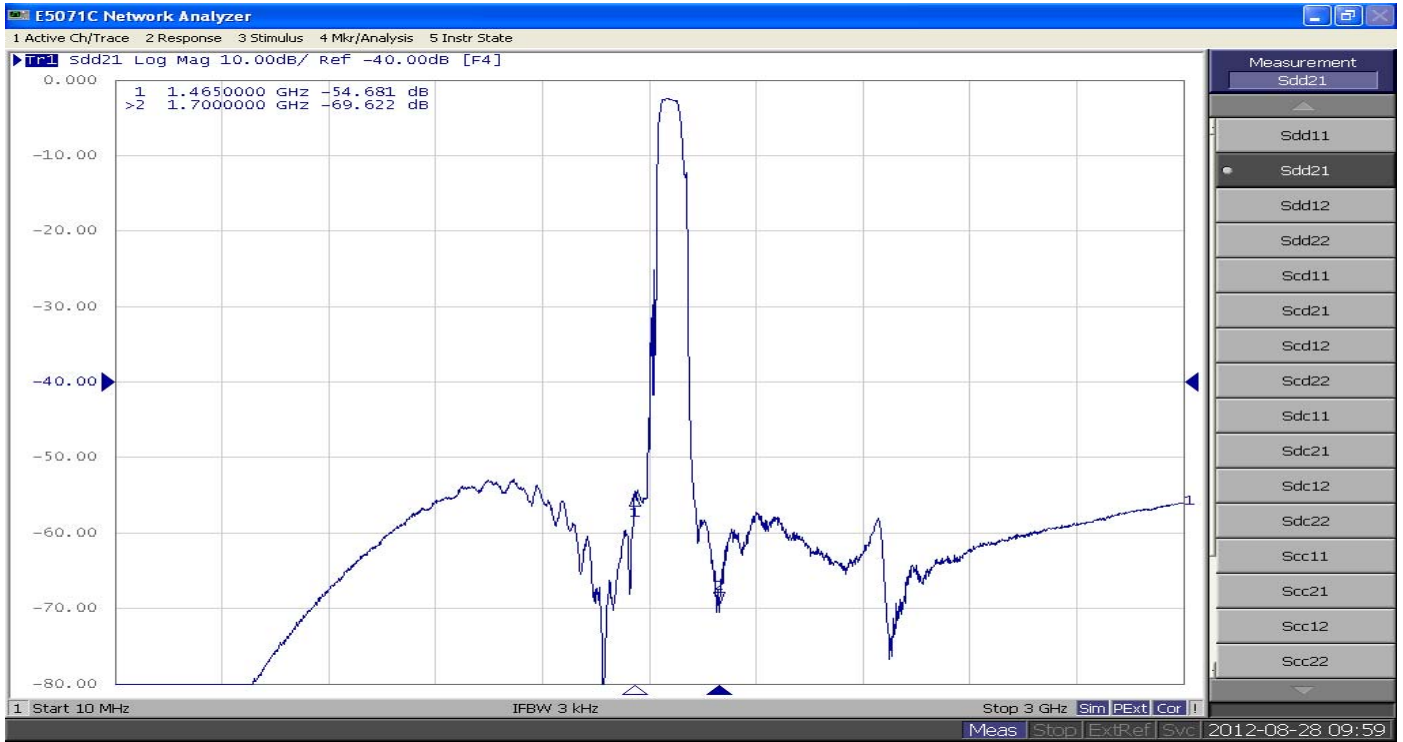
Model: TA1520A
Rev No: 1

F. FREQUENCY CHARACTERISTICS:



SAW Filter 1561.0MHz
Part No: MP07412

Model: TA1520A
Rev No: 1



SAW Filter 1561.0MHz
Part No: MP07412

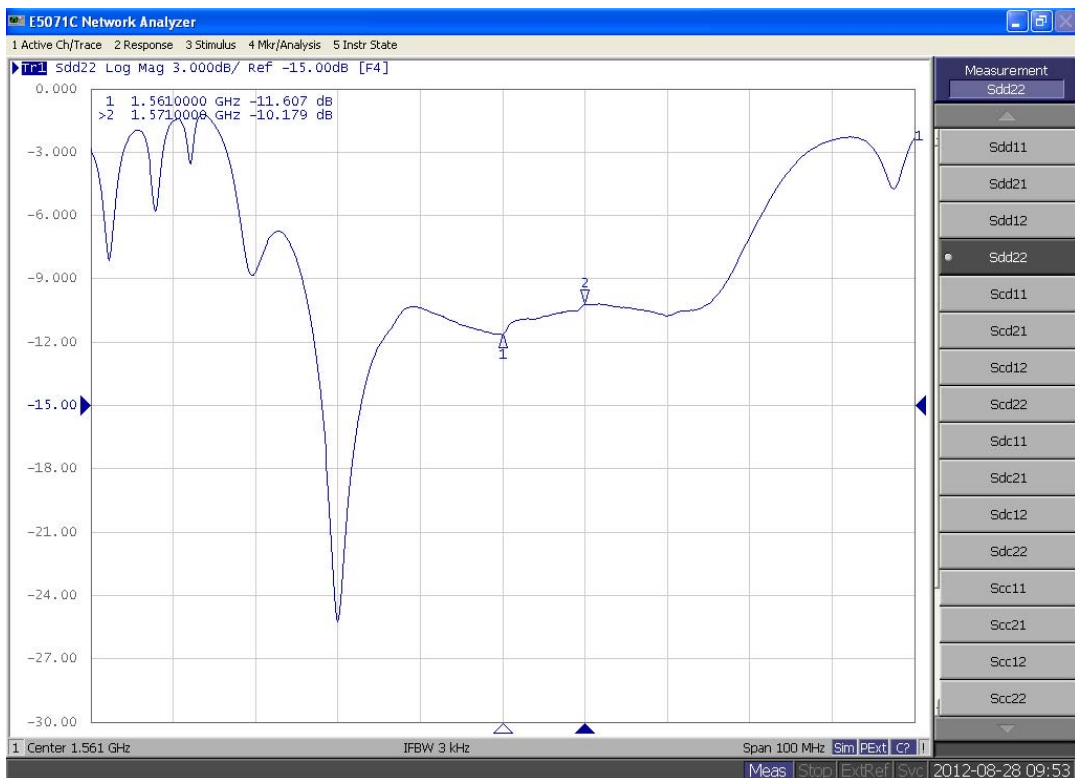
Model: TA1520A
Rev No: 1

Reflection Functions:

S11



S22

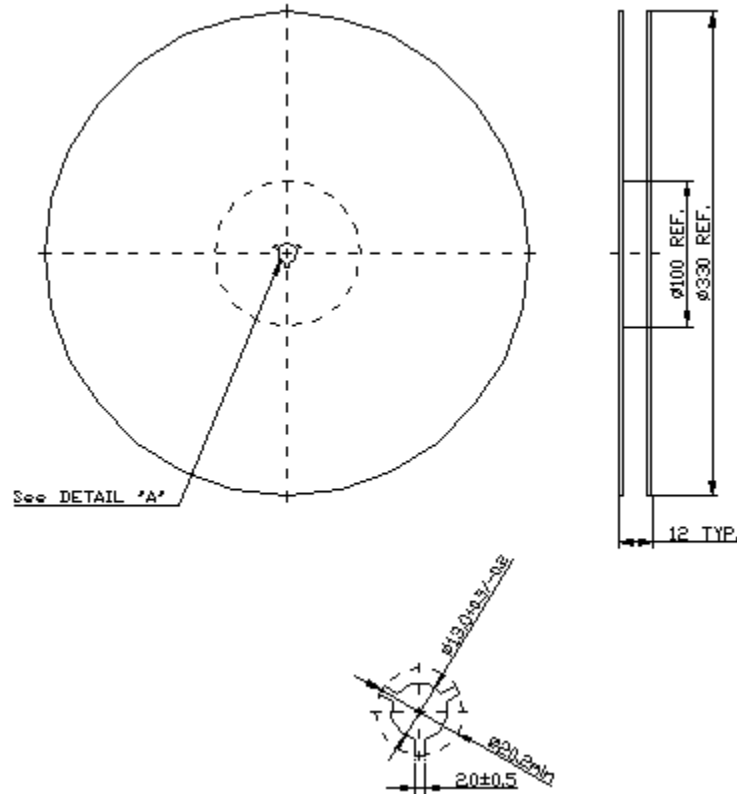


SAW Filter 1561.0MHz
Part No: MP07412

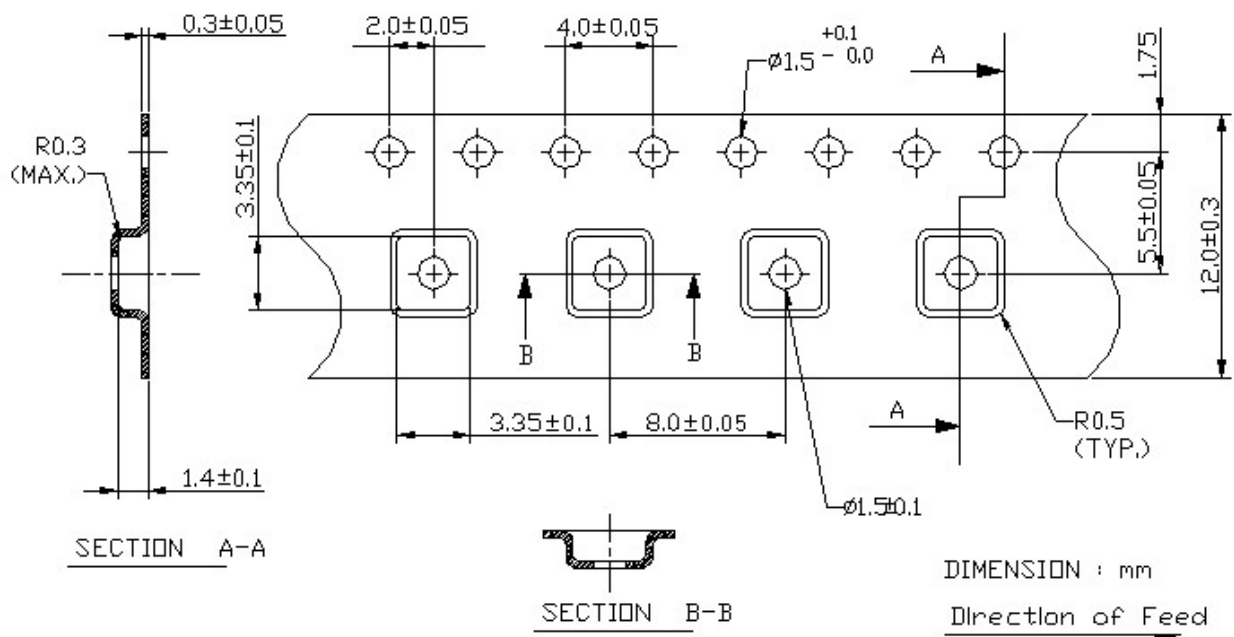
Model: TA1520A
Rev No: 1

G. PACKING:

1. Reel Dimension (Please refer to FR-75D10 for packing quantity)



2. Tape Dimension



SAW Filter 1561.0MHz
Part No: MP07412

Model: TA1520A
Rev No: 1

H. RECOMMENDED REFLOW PROFILE:

1. Preheating shall be fixed at 150 ~ 180°C for 60 ~ 90 seconds.
2. Ascending time to preheating temperature 150°C shall be 30 seconds min.
3. Heating shall be fixed at 220°C for 50 ~ 80 seconds and at 245 ~ 260°C peak (min. 10 sec).
4. Time: 2 times.

