

**SAW Filter 169.20MHz**  
**Part No: MP07390**

**Model: TB1211A**  
**Rev No: 1**

**A. MAXIMUM RATING:**

Electrostatic Sensitive Device

1. Operating temperature range: -10°C to 75°C
2. Storage temperature range: -40°C to 85°C
3. Input Power Level: 10dBm
4. Maximum DC Voltage: 10V

**B. ELECTRONIC CHARACTERISTICS:**

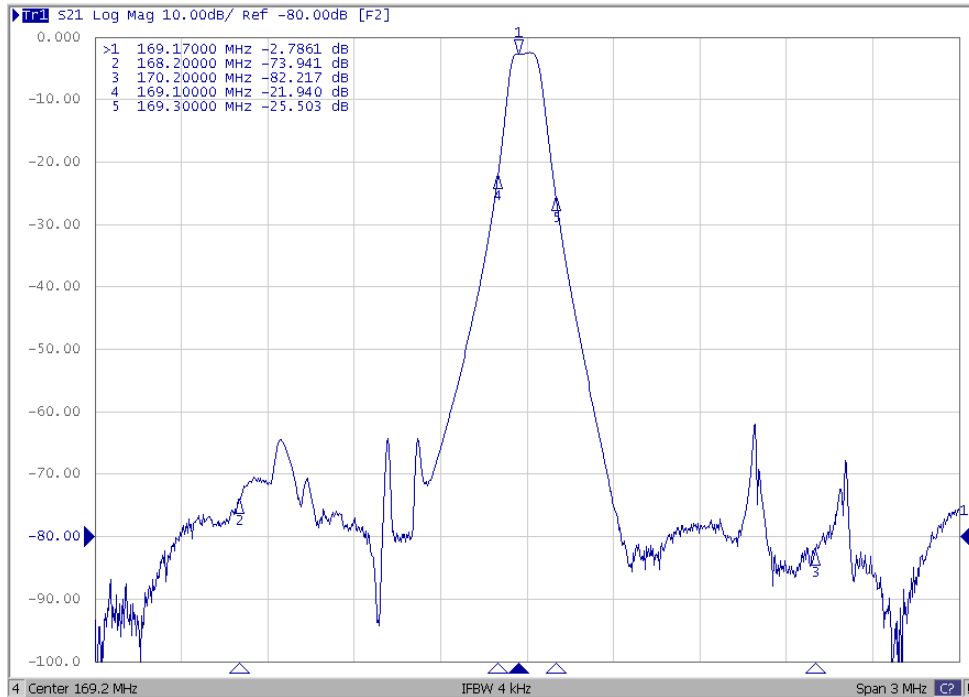
Item	Unit	Min.	Typ.	Max.
Center frequency Fc	MHz	-	169.2	-
Insertion Loss IL at 25°C	dB	-	2.8	4.2
Insertion Loss IL at -10°C to 75°C	dB	-	2.8	4.6
Passband Ripple Fc ± 7.5kHz at -10°C to 75°C	dB	-	0.35	±0.7
Attenuation: (Reference level from Min IL)				
Fc ± 1MHz	dB	55	60	-
Fc ± 100kHz at 25°C	dB	10	20	-
Fc ± 100kHz at -10°C to 75°C	dB	7	20	-
Temperature Coefficient	ppm/°C <sup>2</sup>	-	-0.036	-
Source Impedance	Ohm	-	50	-
Load Impedance	Ohm	-	50	-

**SAW Filter 169.20MHz**  
**Part No: MP07390**

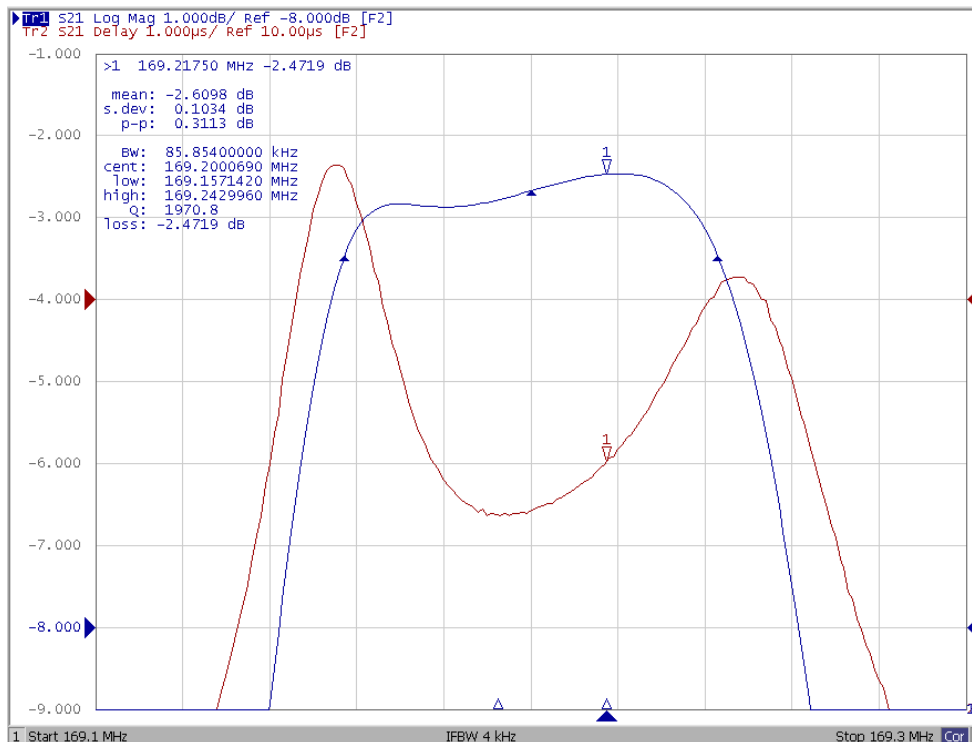
**Model: TB1211A**  
**Rev No: 1**

**C. FREQUENCY CHARACTERISTICS:**

1. Wide band Response



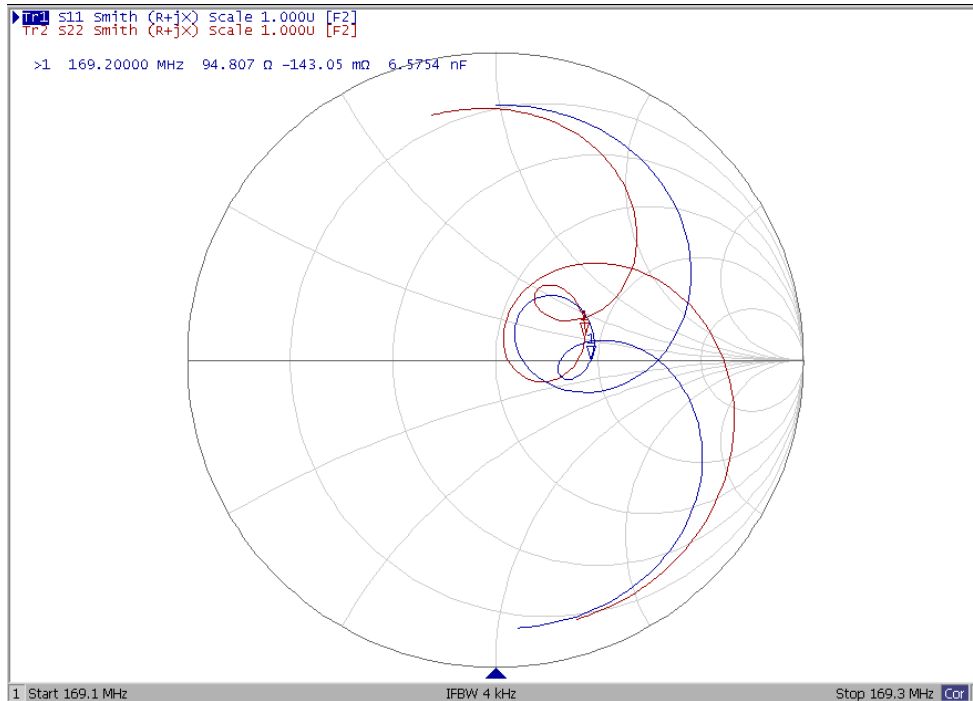
2. Pass band Response and Group delay



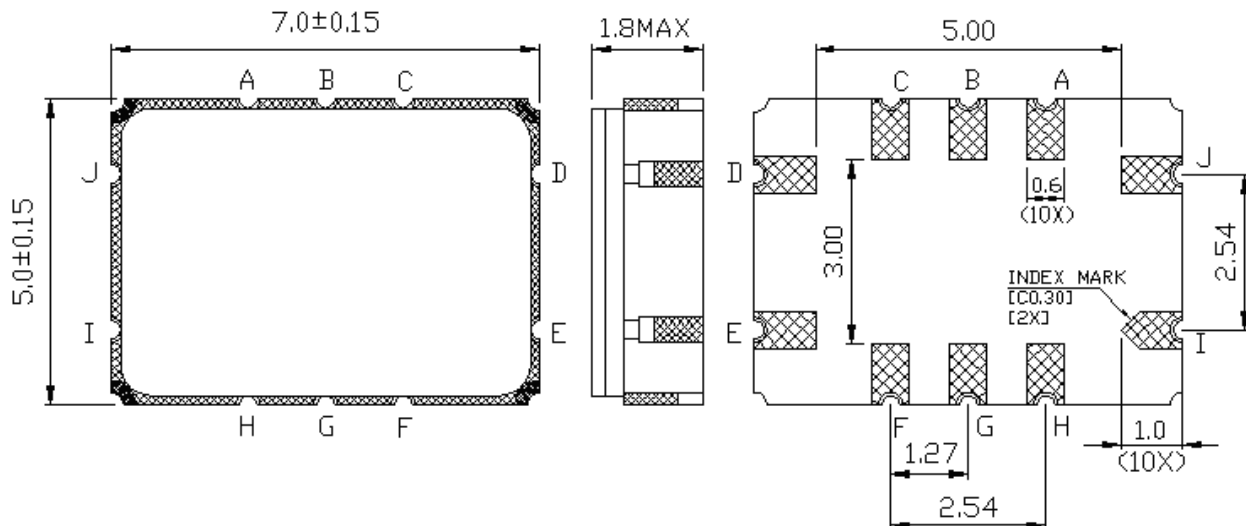
**SAW Filter 169.20MHz**  
**Part No: MP07390**

**Model: TB1211A**  
**Rev No: 1**

3. Smith chart



**D. OUTLINE DRAWING:**

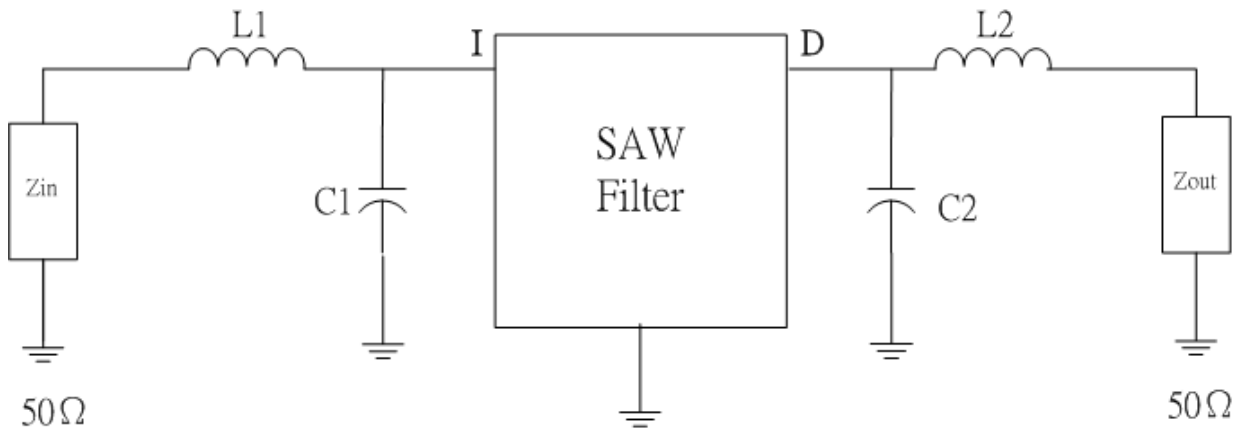


- I: Input
  - J: Input Ground
  - D: Output
  - E: Output Ground
  - A, B, C, F, G, H: Ground
- Unit: mm

**SAW Filter 169.20MHz**  
**Part No: MP07390**

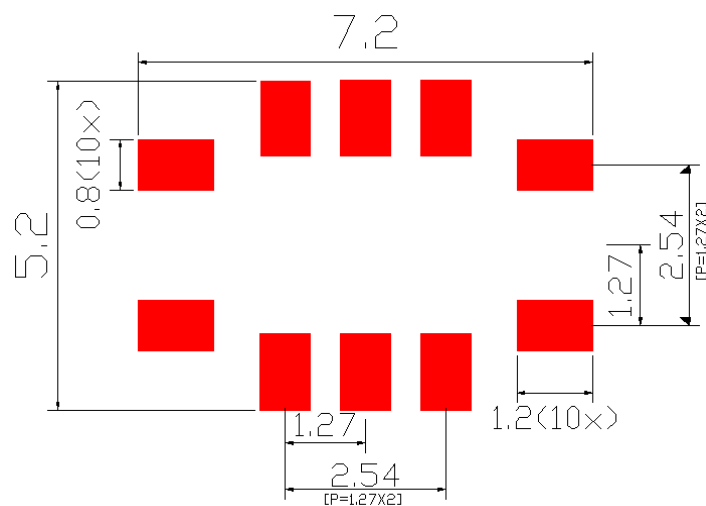
**Model: TB1211A**  
**Rev No: 1**

**E. MATCHING CIRCUIT:**



$C1 = 1.5\text{pF}$ ,  $C2 = 1.5\text{pF}$ ,  $L1 = 180\text{nH}$ ,  $L2 = 180\text{nH}$

**F. PCB FOOTPRINT:**

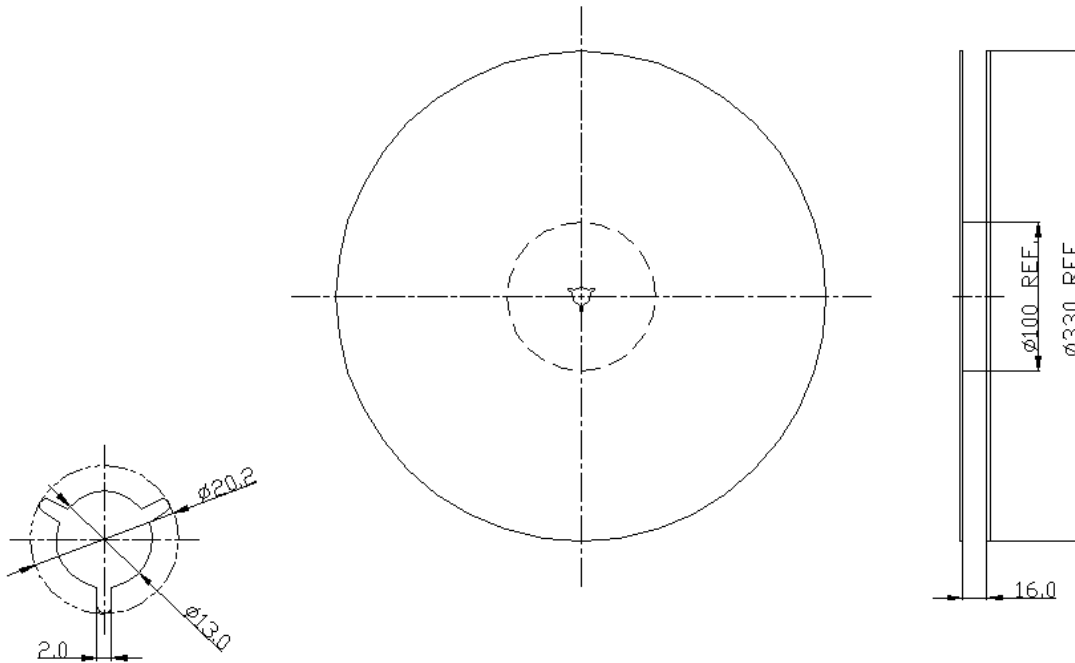


**SAW Filter 169.20MHz**  
**Part No: MP07390**

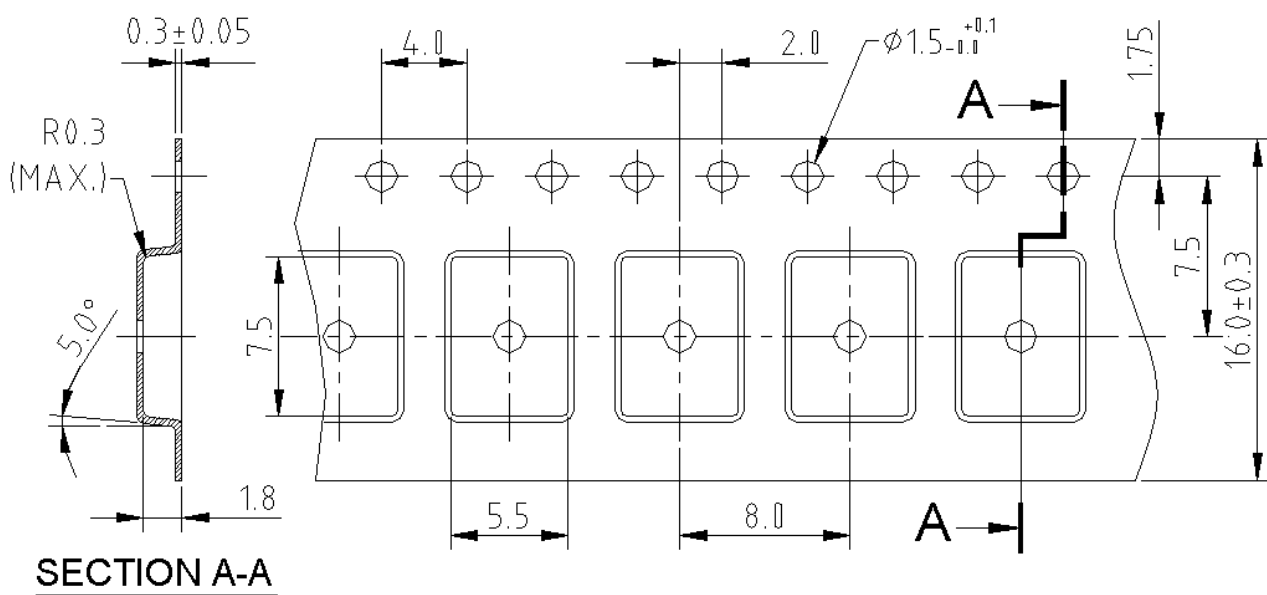
**Model: TB1211A**  
**Rev No: 1**

**G. PACKING:**

1. Reel Dimension (Please refer to FR-75D10 for packing quantity)



2. Tape Dimension



**SAW Filter 169.20MHz**  
**Part No: MP07390**

**Model: TB1211A**  
**Rev No: 1**

**H. RECOMMENDED REFLOW PROFILE:**

1. Preheating shall be fixed at 150 ~ 180°C for 60 ~ 90 seconds.
2. Ascending time to preheating temperature 150°C shall be 30 seconds min.
3. Heating shall be fixed at 220°C for 50 ~ 80 seconds and at 260°C +0/-5° peak (20 ~ 40 sec).
4. Time: 2 times.

