

SAW Filter 1068.0MHz
Part No: MP05954

Model: TA1477A
Rev No: 1

A. MAXIMUM RATING:

Electrostatic Sensitive Device (ESD)

1. Input Power Level: 10dBm
2. DC voltage: 3V
3. Operating Temperature: -40°C to 85°C
4. Storage Temperature: -50°C to +125°C

B. CHARACTERISTICS:

1. Terminating source impedance (differential): $Z_S = 150\Omega // 27nH$
2. Terminating load impedance (differential): $Z_L = 150\Omega // 27nH$

Item	Unit	Min.	Typ.	Max.
Center frequency Fc	MHz	-	1068	-
Insertion loss (1048 ~ 1088MHz) IL	dB	-	2.9	5
Amplitude ripple (1048 ~ 1088MHz)	dB	-	0.7	2
VSWR (1048 ~ 1088MHz)	-	-	1.9	2.5
Group delay ripple (1048 ~ 1088MHz)	ns	-	18	25
Attenuation (reference from 0dB)				
10 ~ 862MHz	dB	50	53	-
900 ~ 950MHz	dB	40	55	-
1150 ~ 1190MHz	dB	20	55	-
1190 ~ 1270MHz	dB	25	57	-
1270 ~ 1400MHz	dB	40	55	-
1400 ~ 1800MHz	dB	30	47	-
Temperature Coefficient of Frequency	ppm/°C	-	-36	-

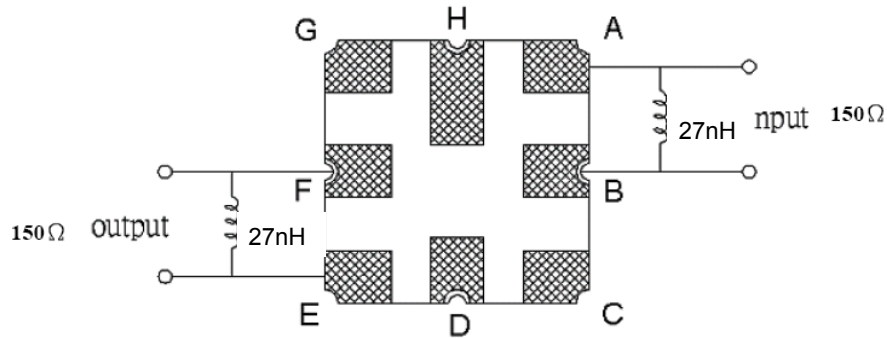
SAW Filter 1068.0MHz

Model: TA1477A

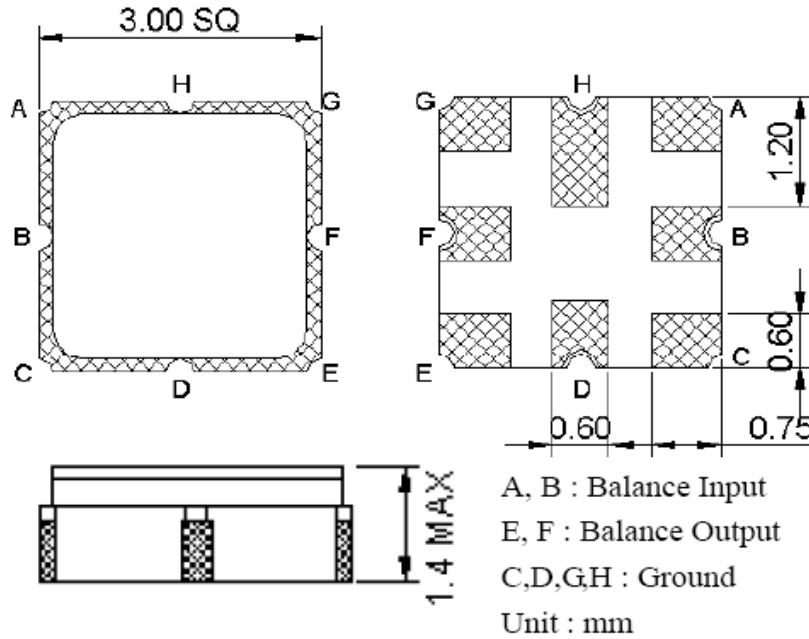
Part No: MP05954

Rev No: 1

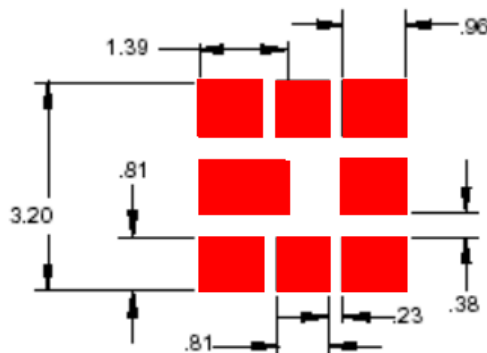
C. MEASUREMENT CIRCUIT:



D. OUTLINE DRAWING:



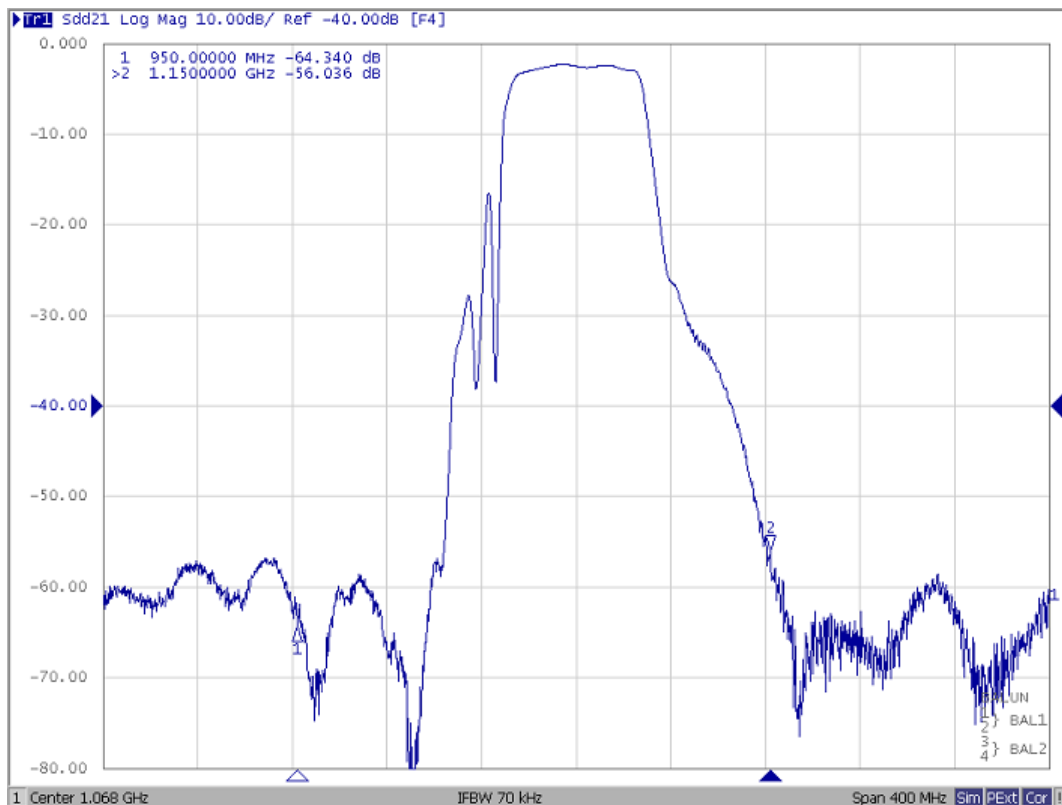
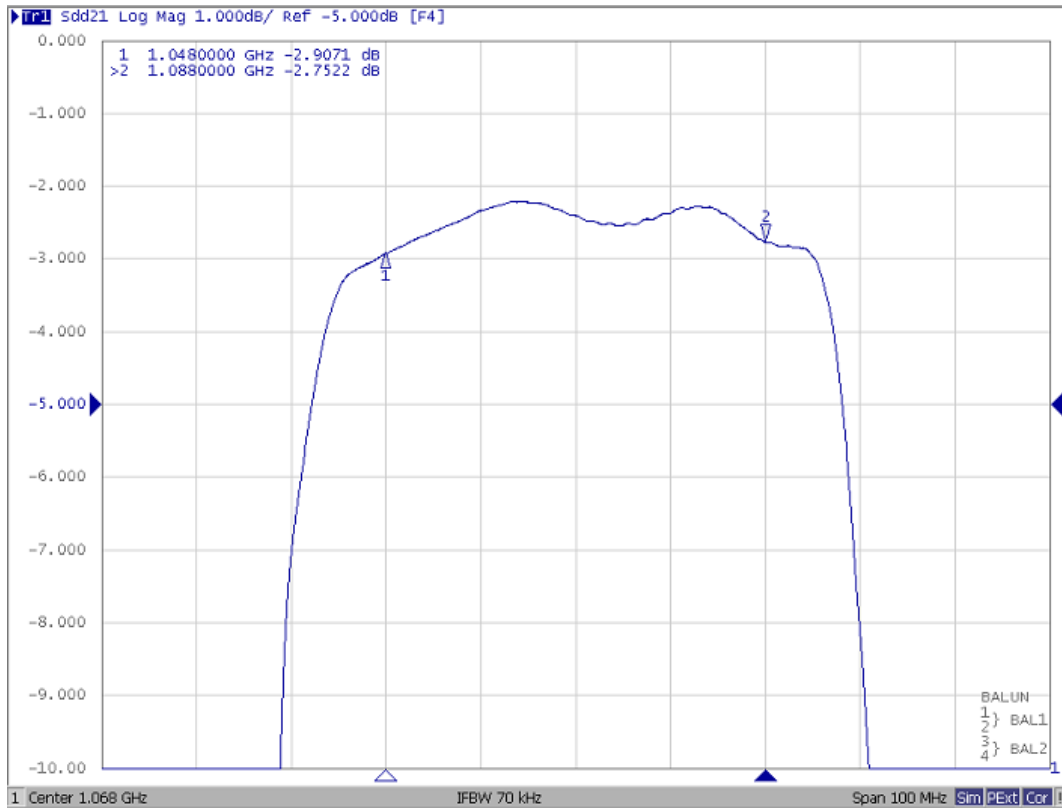
E. PCB FOOTPRINT:



SAW Filter 1068.0MHz
Part No: MP05954

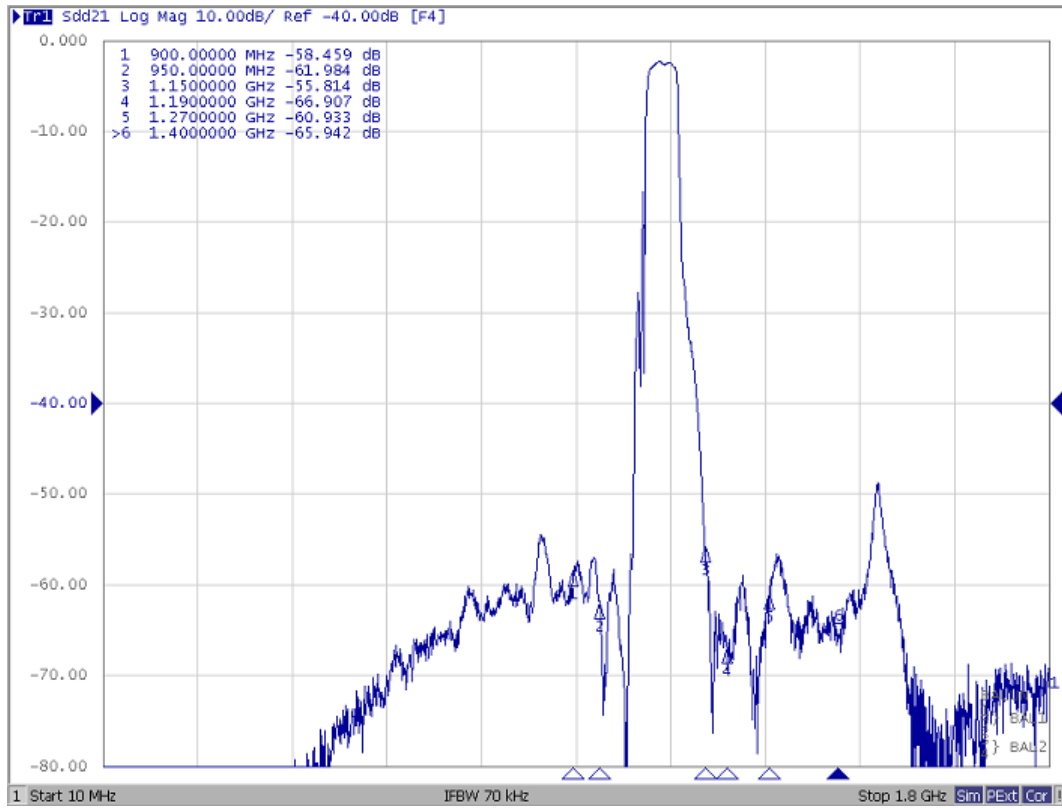
Model: TA1477A
Rev No: 1

F. FREQUENCY CHARACTERISTICS:



SAW Filter 1068.0MHz
Part No: MP05954

Model: TA1477A
Rev No: 1

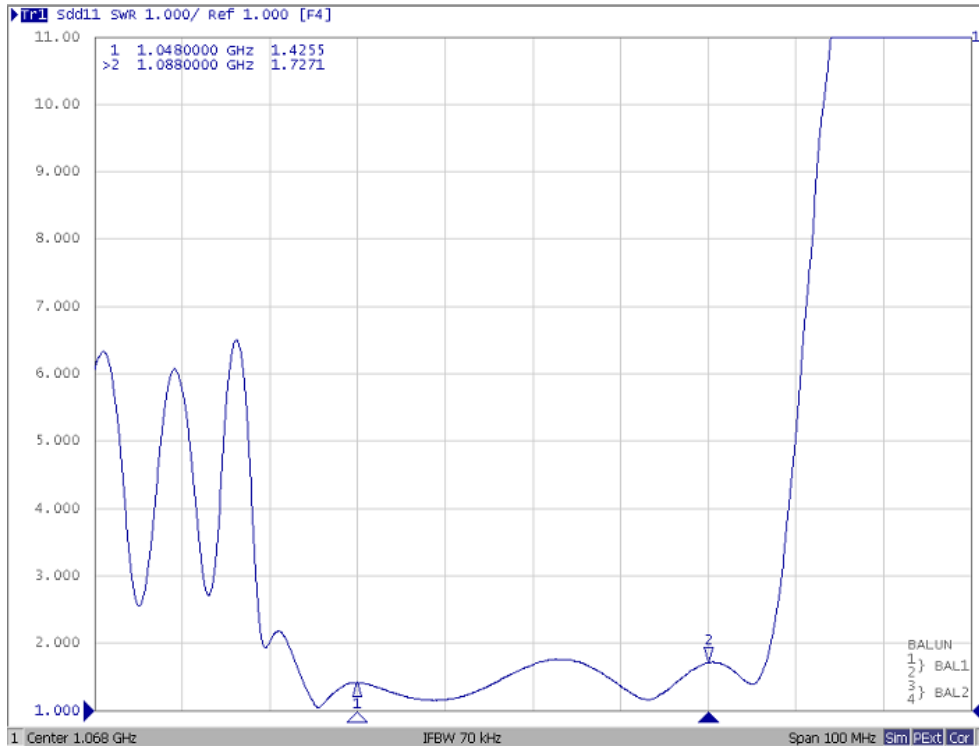


SAW Filter 1068.0MHz
Part No: MP05954

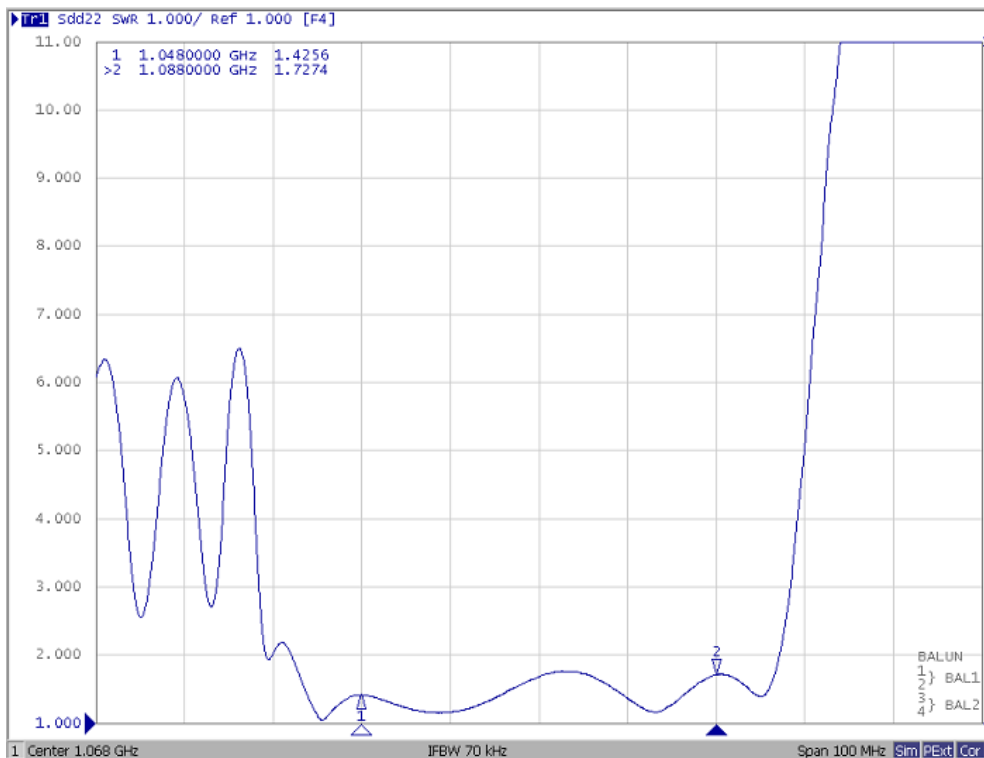
Model: TA1477A
Rev No: 1

Reflection Functions

S11



S22

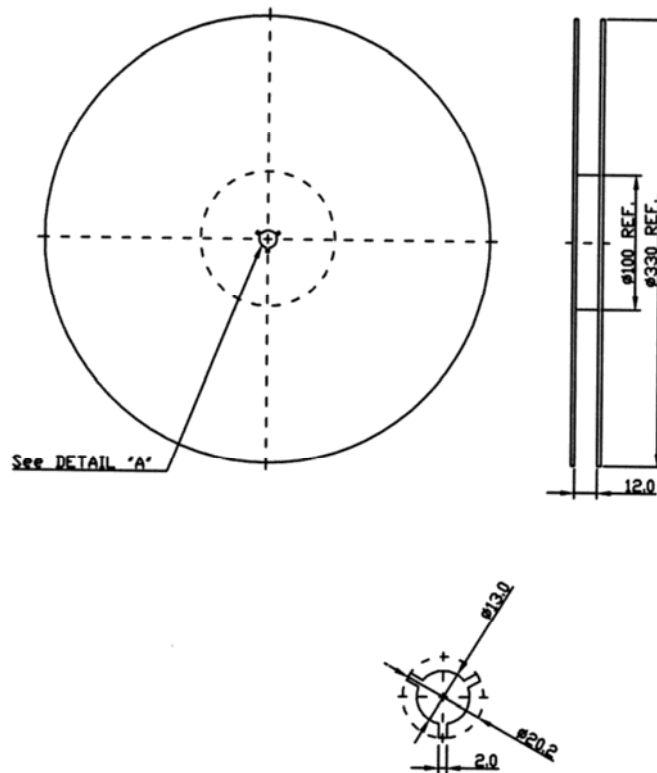


SAW Filter 1068.0MHz
Part No: MP05954

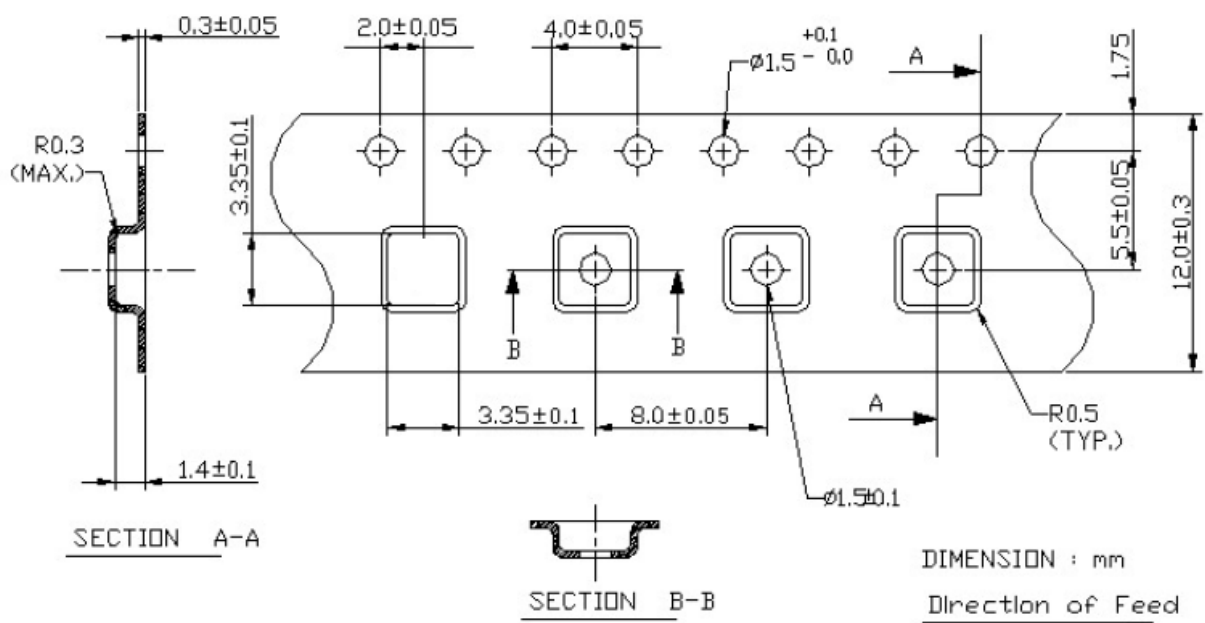
Model: TA1477A
Rev No: 1

G. PACKING:

1. Reel Dimension



2. Tape Dimension



SAW Filter 1068.0MHz
Part No: MP05954

Model: TA1477A
Rev No: 1

H. RECOMMENDED REFLOW PROFILE:

