

SAW Filter 1030.0MHz
Part No: MP05919

Model: TA0973A
Rev No: 1

A. MAXIMUM RATING:

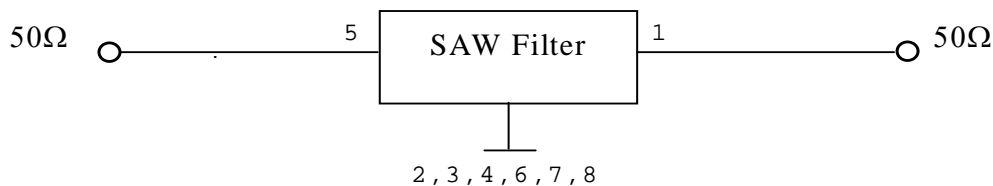
1. Input Power Level: 10dBm
2. DC voltage: 0V
3. Operating Temperature: -30°C to +85°C
4. Storage Temperature: -40°C to +85°C

B. ELECTRICAL CHARACTERISTICS:

Characteristics (at 25°C)	Min.	Typ.	Max.
Center frequency Fc (dB)	-	1030	-
Insertion loss within 1015 ~ 1045MHz IL (dB)	-	2.2	3.0
Amplitude ripple (p-p) within 1025 ~ 1035MHz (dB)	-	0.57	1.0
Attenuation (Reference level from 0dB)			
DC ~ 910MHz (dB)	25.0	29.5	-
1090 ~ 1300MHz (dB)	25.0	36.5	-
VSWR within 1015 ~ 1045MHz	-	1.45	2.1
Source impedance Z _S (Ω)	-	50	-
Load impedance Z _L (Ω)	-	50	-

C. MEASUREMENT CIRCUIT:

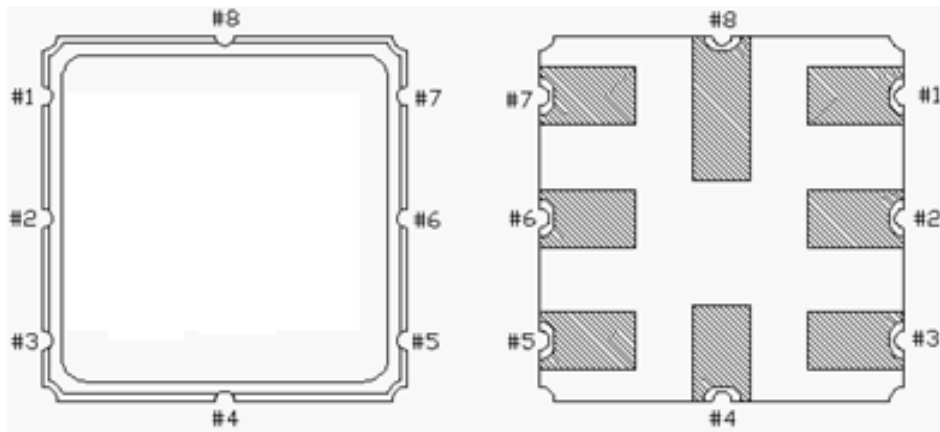
HP Network analyzer



SAW Filter 1030.0MHz
Part No: MP05919

Model: TA0973A
Rev No: 1

D. OUTLINE DRAWING:



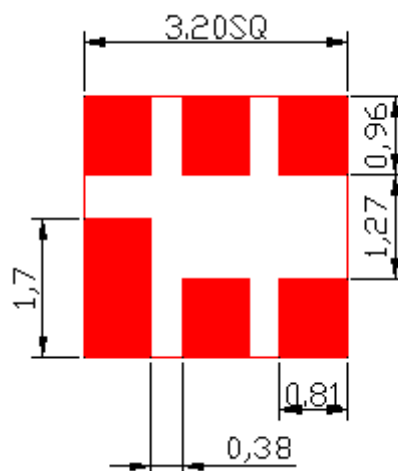
1: Output

5: Input

2, 3, 4, 6, 7, 8: Ground

Unit: mm

E. PCB FOOTPRINT:

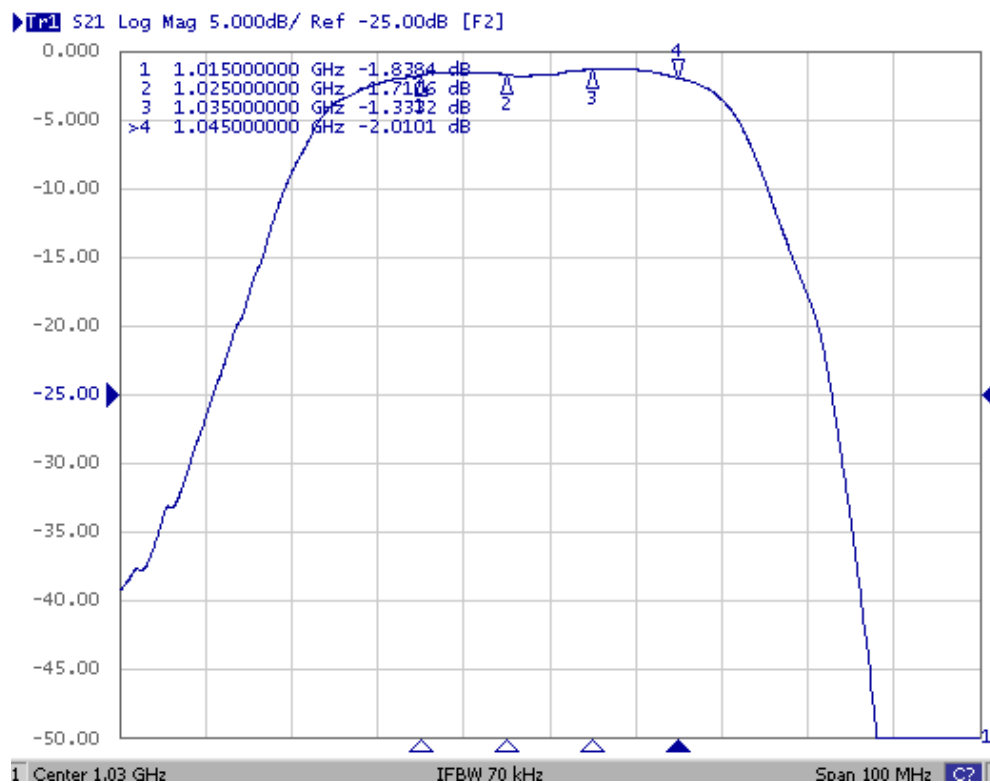
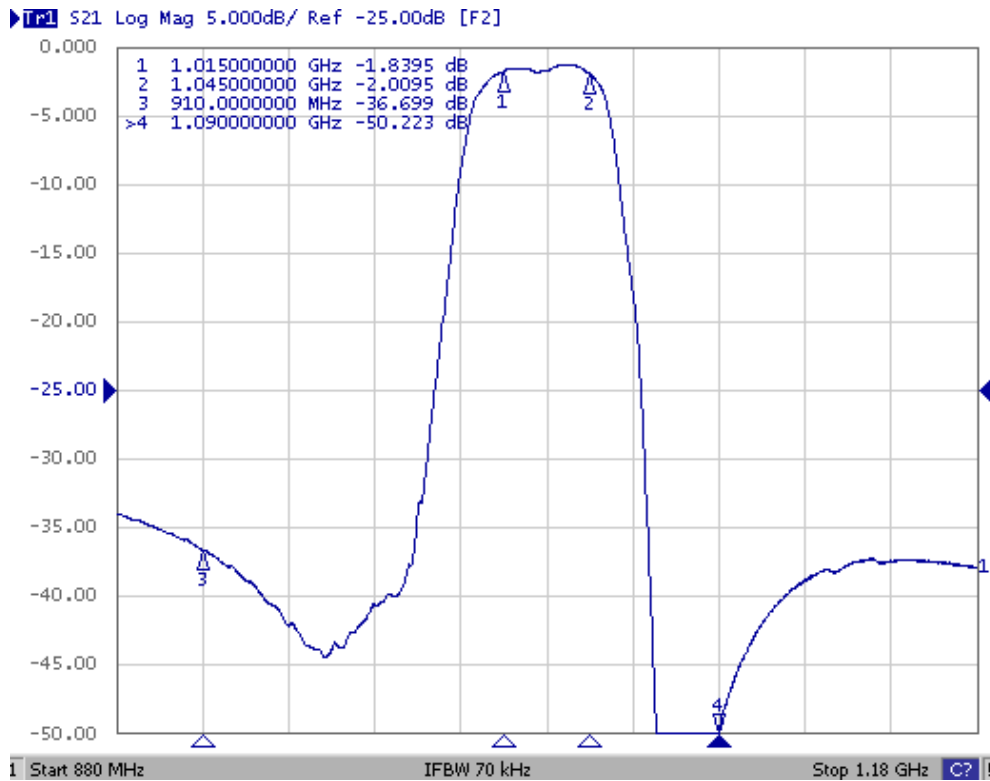


SAW Filter 1030.0MHz
Part No: MP05919

Model: TA0973A
Rev No: 1

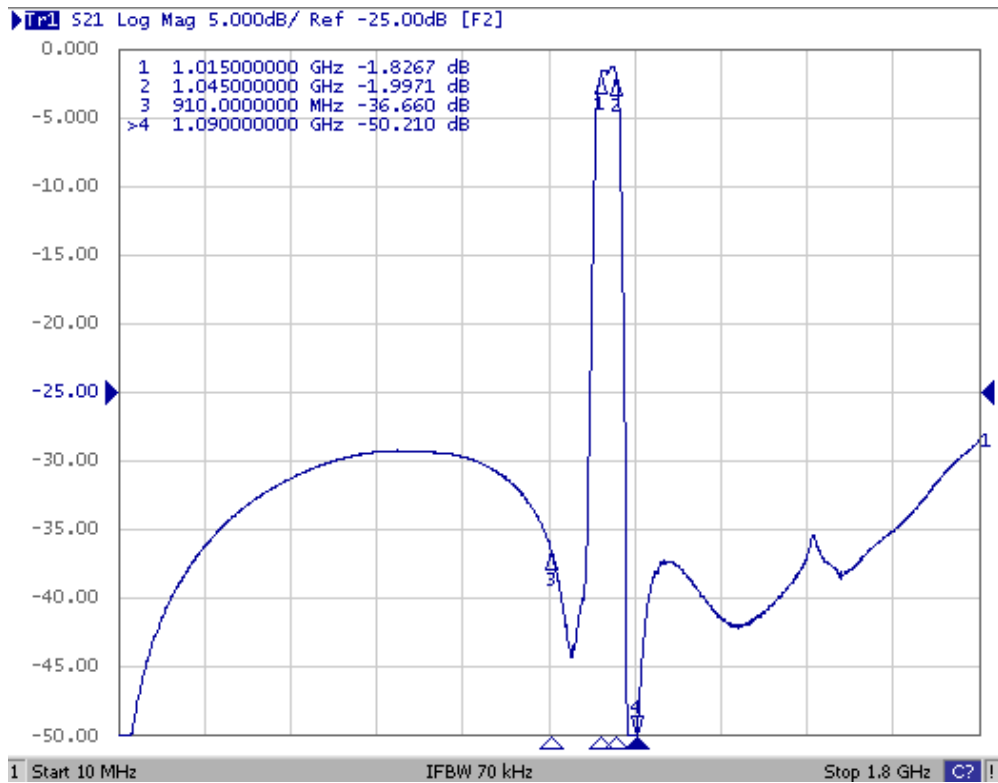
F. FREQUENCY CHARACTERISTICS:

1. Transfer function



SAW Filter 1030.0MHz
Part No: MP05919

Model: TA0973A
Rev No: 1

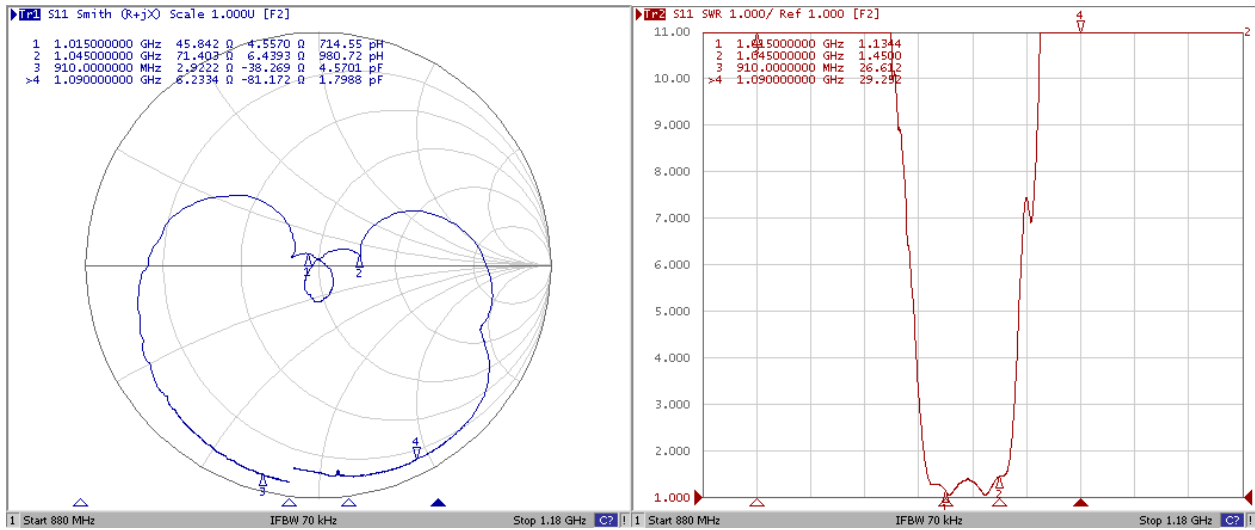


SAW Filter 1030.0MHz
Part No: MP05919

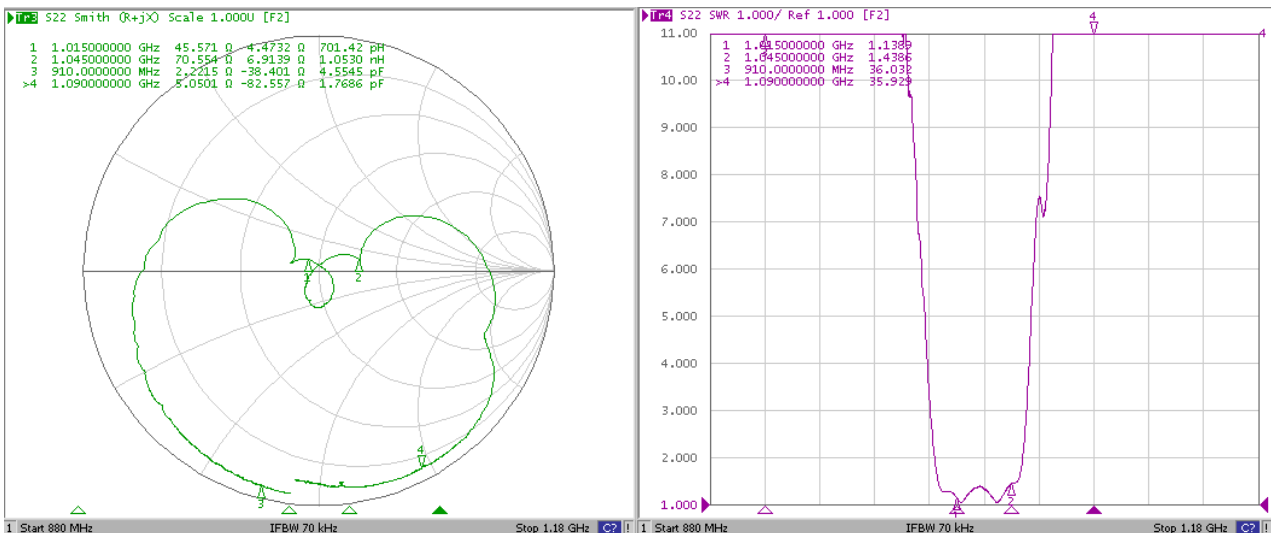
Model: TA0973A
Rev No: 1

2. Reflections Functions

S11



S22

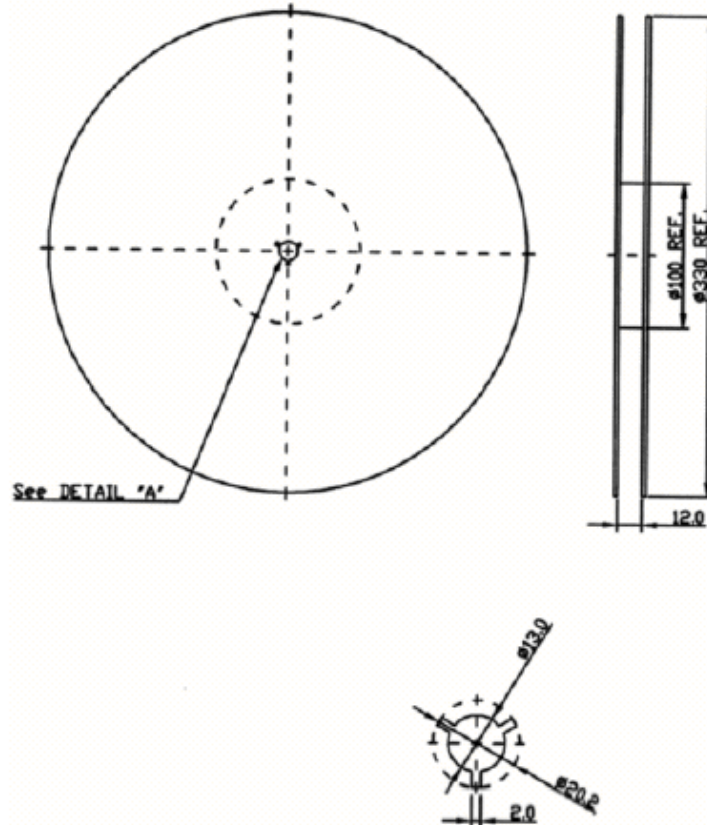


SAW Filter 1030.0MHz
Part No: MP05919

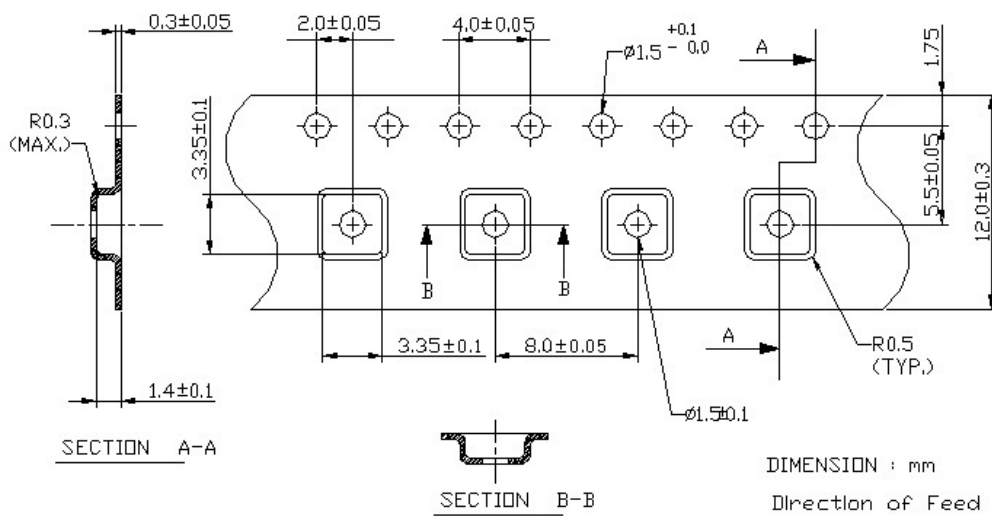
Model: TA0973A
Rev No: 1

G. PACKING:

1. Reel Dimension: 7" reel = 1000 typ, 13" reel = 3000 typ, or per the request of customer order.



2. Tape Dimension



SAW Filter 1030.0MHz
Part No: MP05919

Model: TA0973A
Rev No: 1

H. RECOMMENDED REFLOW PROFILE:

