

SAW Filter 1002.0MHz

Model: TA0578A

Part No: MP05688

Rev No: 1

A. MAXIMUM RATING:

1. Input Power Level: 10dBm
2. DC voltage: 3V
3. Operating Temperature: -40°C to +85°C
4. Storage Temperature: -40°C to +85°C

B. ELECTRICAL CHARACTERISTICS:

Characteristics	Min.	Typ.	Max.	Note
Center frequency Fc MHz	-	1002	-	-
Insertion loss 982 ~ 1022MHz IL dB	-	3.5	4.8	-
Ripple 982 ~ 1022MHz dB	-	2.0	3.1	-
Attenuation: (Reference level from 0dB)				
10 ~ 840MHz dB	40	48	-	-
840 ~ 932MHz dB	39	46	-	-
932 ~ 945MHz dB	35	40	-	-
1055 ~ 1070MHz dB	21	35	-	-
1070 ~ 1100MHz dB	28	38	-	-
1100 ~ 1158MHz dB	39	50	-	-
1158 ~ 2000MHz dB	30	40	-	-
Source Impedance Z_S Ω	-	50	-	1
Load Impedance Z_L Ω	-	50	-	1

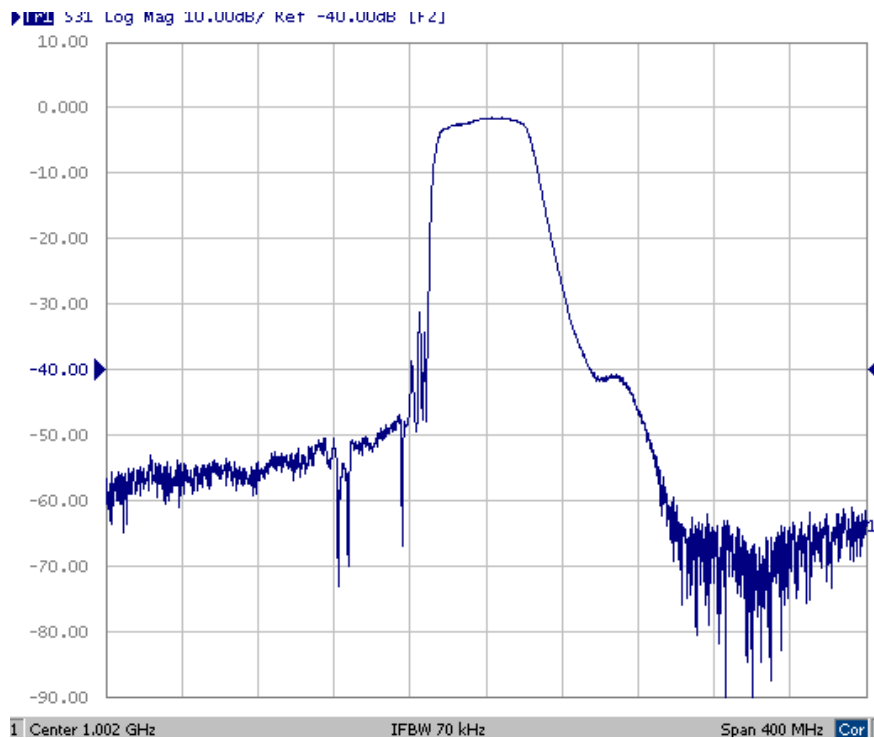
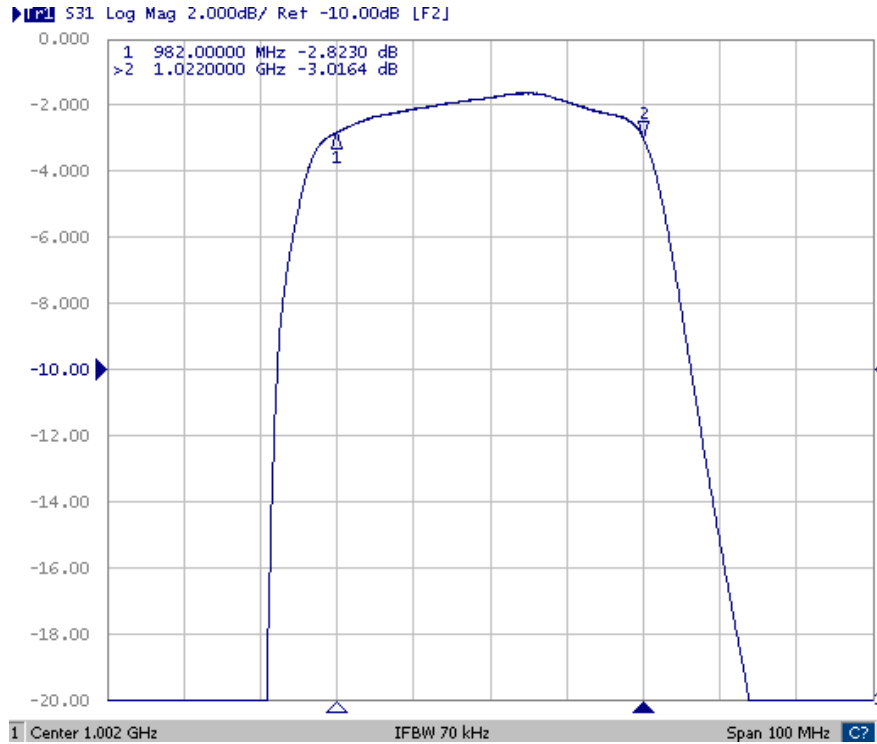
Note 1: No matching network required for operation at 50 Ω

SAW Filter 1002.0MHz
Part No: MP05688

Model: TA0578A
Rev No: 1

C. FREQUENCY CHARACTERISTICS:

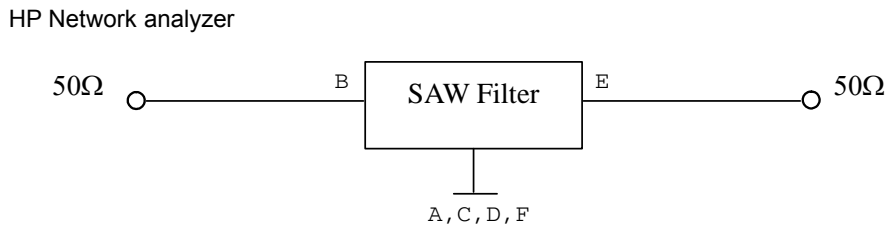
Transfer Functions



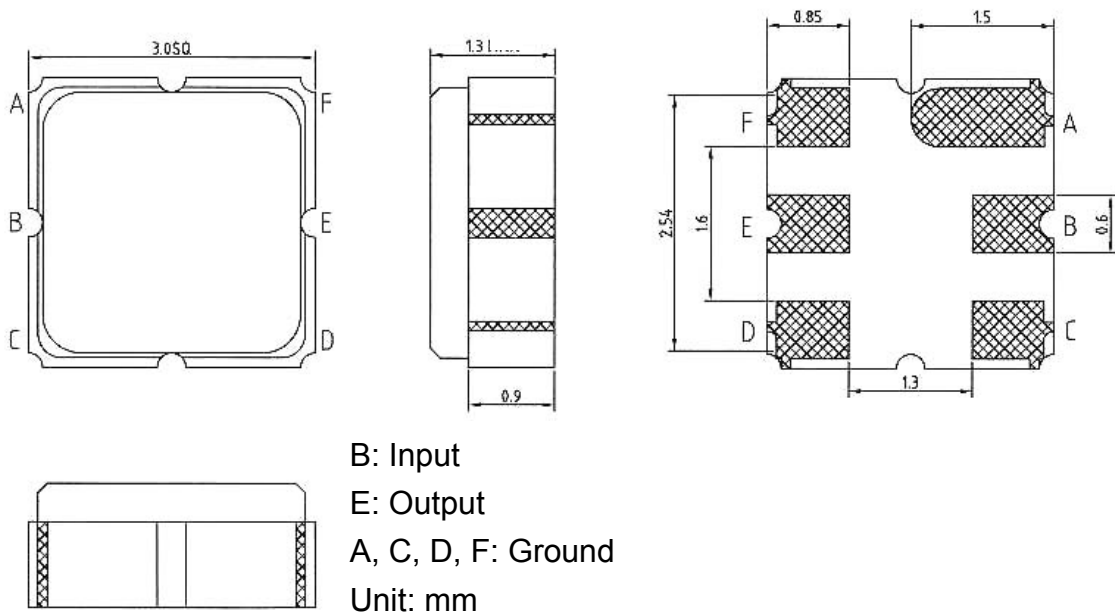
SAW Filter 1002.0MHz
Part No: MP05688

Model: TA0578A
Rev No: 1

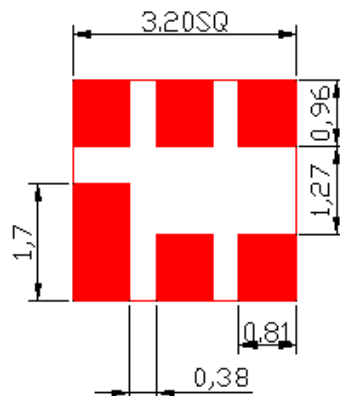
D. MEASUREMENT CIRCUIT:



E. OUTLINE DRAWING:



F. PCB FOOTPRINT:

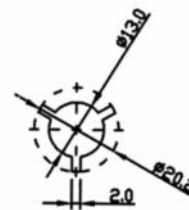
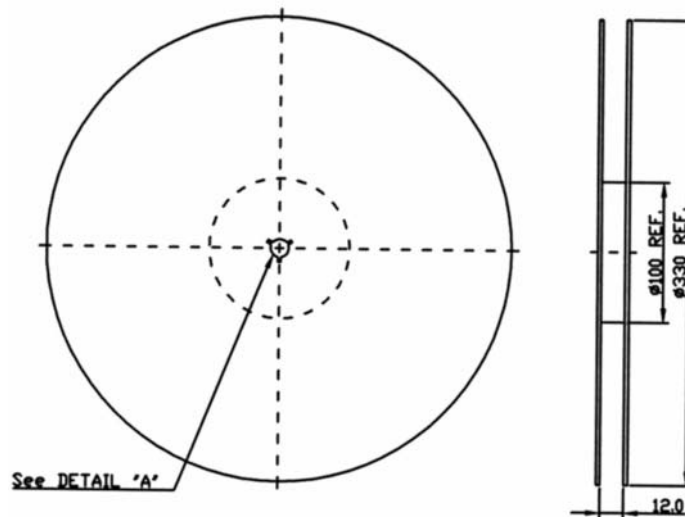


SAW Filter 1002.0MHz
Part No: MP05688

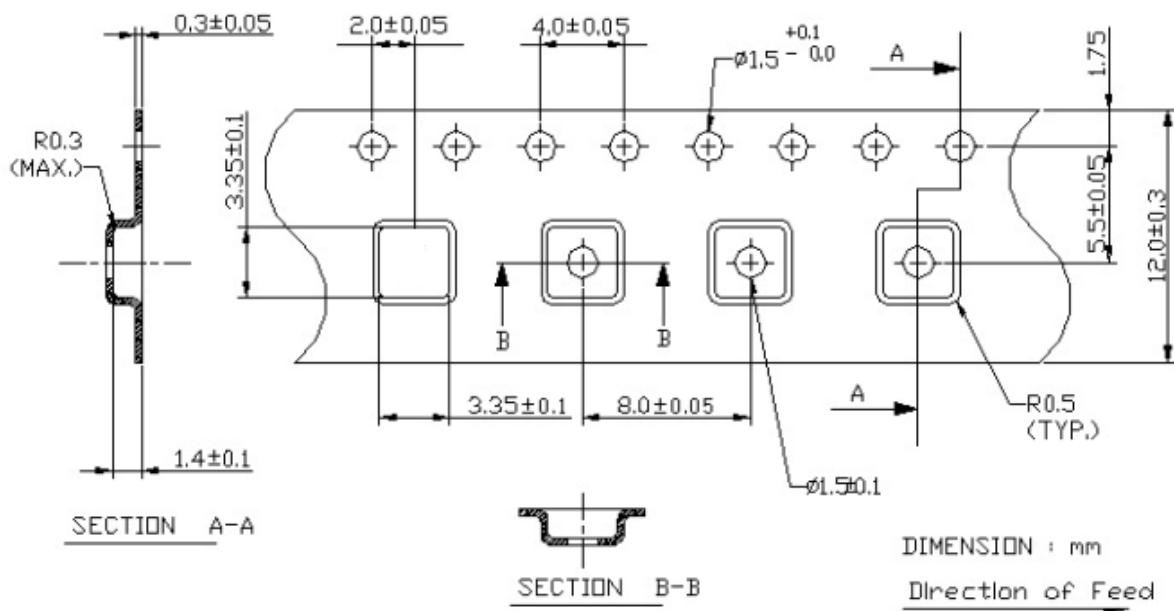
Model: TA0578A
Rev No: 1

G. PACKING:

1. Reel Dimension



2. Tape Dimension



SAW Filter 1002.0MHz
Part No: MP05688

Model: TA0578A
Rev No: 1

H. RECOMMENDED REFLOW PROFILE:

