

SAW Filter 730.0MHz
Part No: MP05180

Model: TA1361A
Rev No: 1

A. MAXIMUM RATING:

Electrostatic Sensitive Device (ESD)

1. Input Power Level: 10dBm
2. DC voltage: 5V
3. Operating Temperature: -30°C to 60°C
4. Storage Temperature: -40°C to +85°C

B. CHARACTERISTICS:

Item	Unit	Min.	Typ.	Max.
Center frequency, Fc	MHz	-	730	-
Amplitude ripple (718 ~ 742MHz)	dB	-	1	1.7
Insertion loss, IL (718 ~ 742MHz)	dB	-	2.3	3.0
Group Delay, GD (718 ~ 742MHz)	ns	-	48	200
Bandwidth @ -3dB		24	32.2	-
Attenuation (reference from 0dB)				
0.3 ~ 655MHz	dB	40	67	-
655 ~ 700MHz	dB	10	55	-
758 ~ 820MHz	dB	10	28	-
820 ~ 1030MHz	dB	40	65	-
1030 ~ 1180MHz	dB	50	65	-
Source impedance, Z _S	Ω	-	50	-
Load impedance, Z _L	Ω	-	50	-

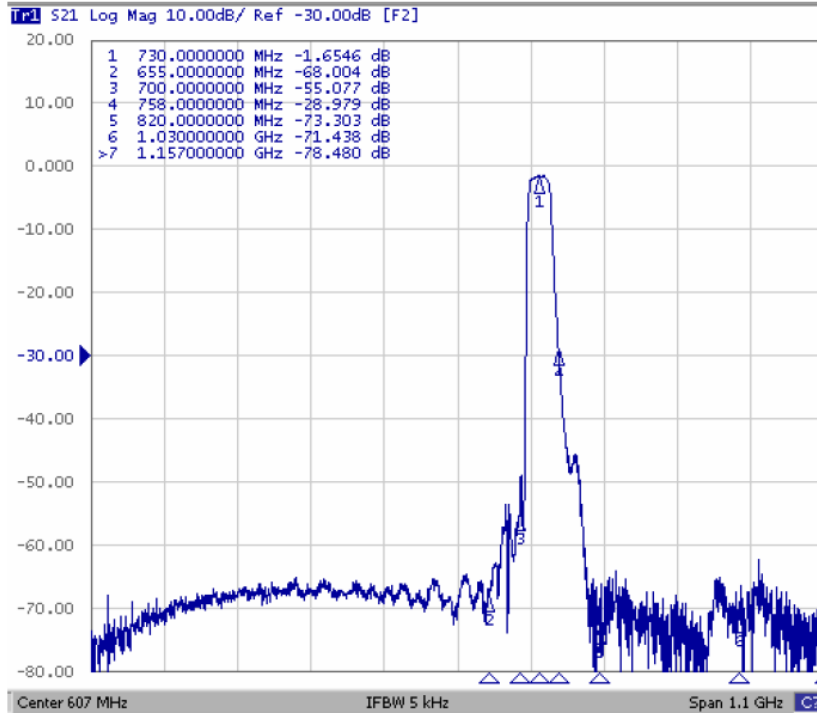
Note: No matching network required for operation at 50Ω

SAW Filter 730.0MHz
Part No: MP05180

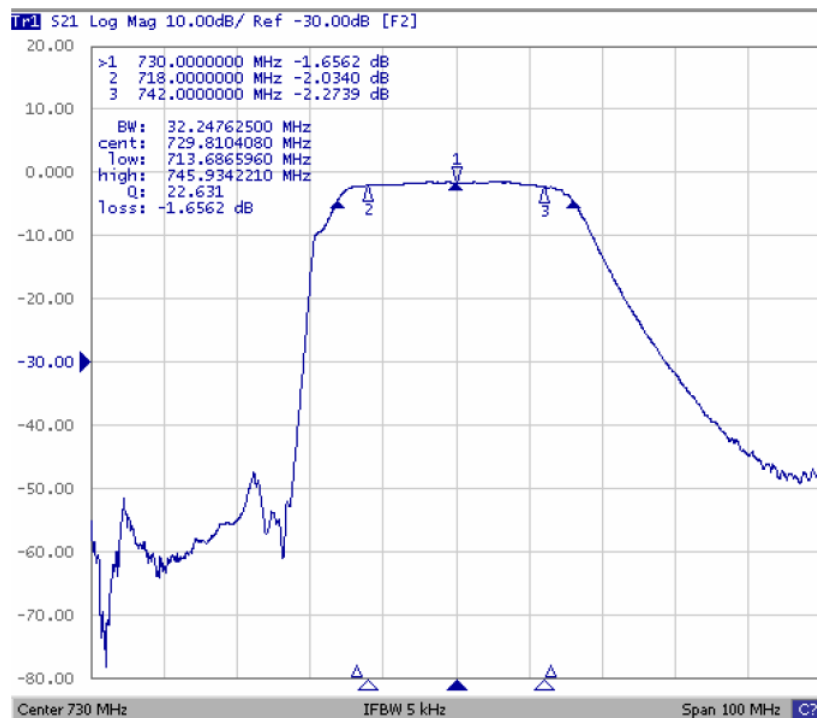
Model: TA1361A
Rev No: 1

C. FREQUENCY CHARACTERISTICS:

1. Wideband



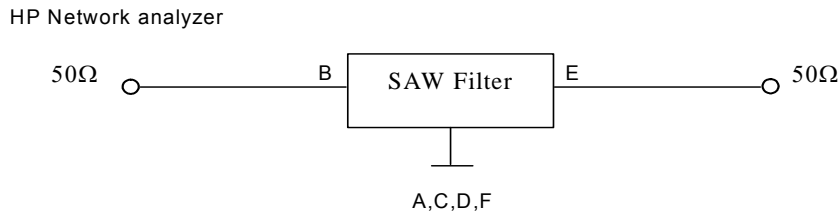
2. Passband



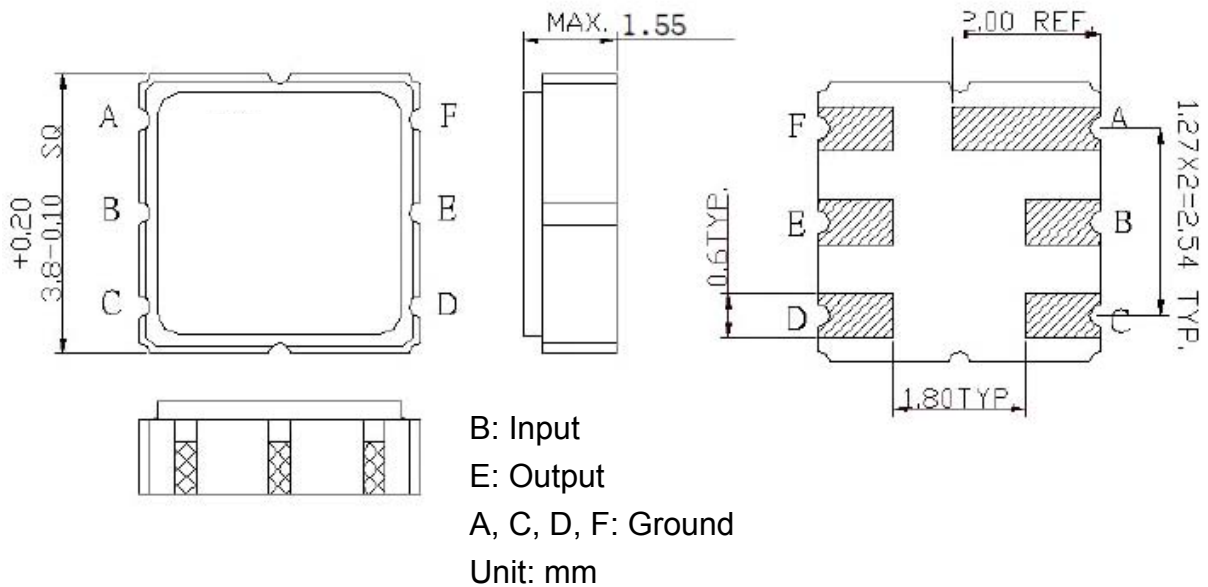
SAW Filter 730.0MHz
Part No: MP05180

Model: TA1361A
Rev No: 1

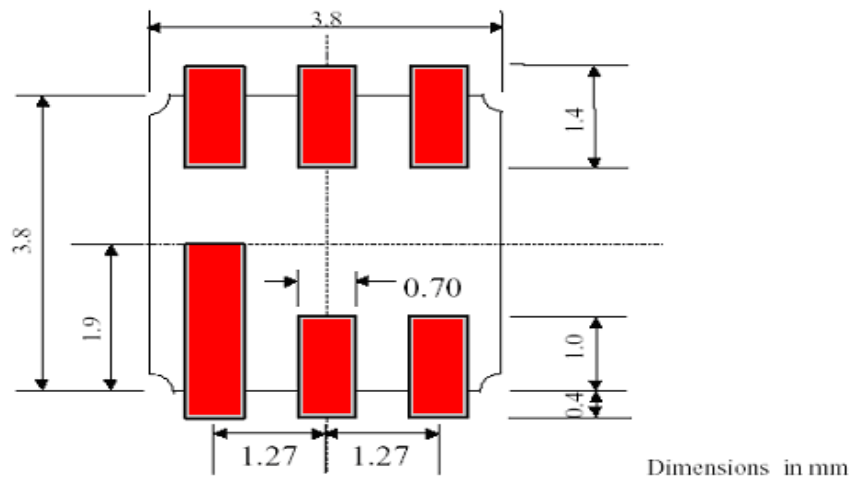
D. MEASUREMENT CIRCUIT:



E. OUTLINE DRAWING:



F. PCB FOOTPRINT:

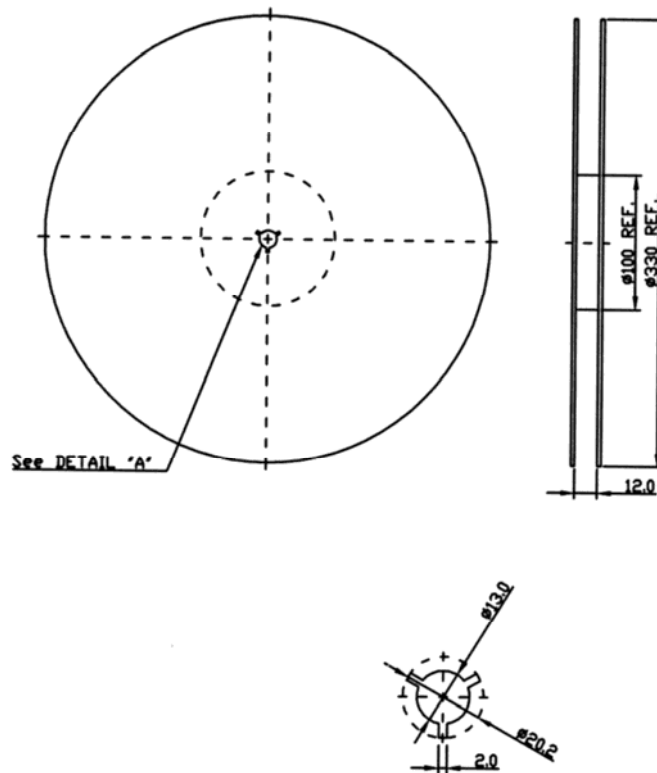


SAW Filter 730.0MHz
Part No: MP05180

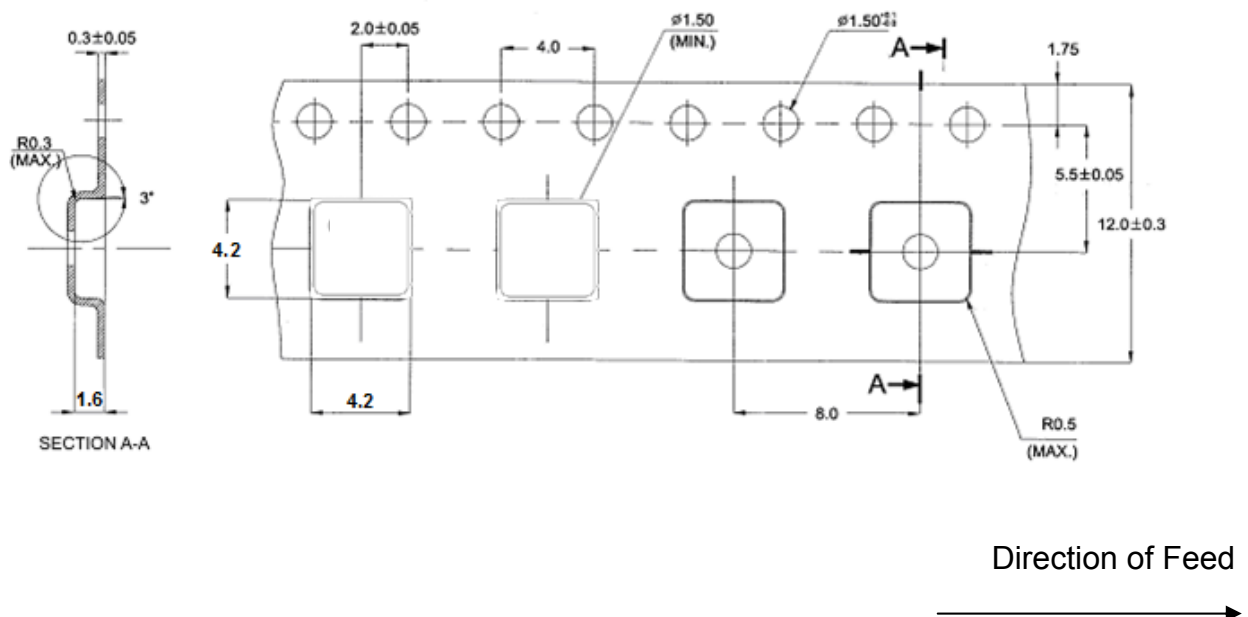
Model: TA1361A
Rev No: 1

G. PACKING:

1. Reel Dimension



2. Tape Dimension



SAW Filter 730.0MHz
Part No: MP05180

Model: TA1361A
Rev No: 1

G. RECOMMENDED REFLOW PROFILE:

1. Preheating shall be fixed at 150 ~ 180°C for 60 ~ 90 seconds.
2. Ascending time to preheating temperature 150°C shall be 30 seconds min.
3. Heating shall be fixed at 220°C for 50 ~ 80 seconds and at 260°C +0/-5°C peak (20 ~ 40 sec).
4. Time: 2 times.

