

SAW Filter 288.0MHz
Part No: MP03533

Model: TB0587A
Rev No: 1

A. MAXIMUM RATING:

1. Input Power Level: 10dBm
2. Operating Temperature: -40°C ~ 85°C
3. Storage Temperature: -40°C ~ +85°C

B. CHARACTERISTICS:

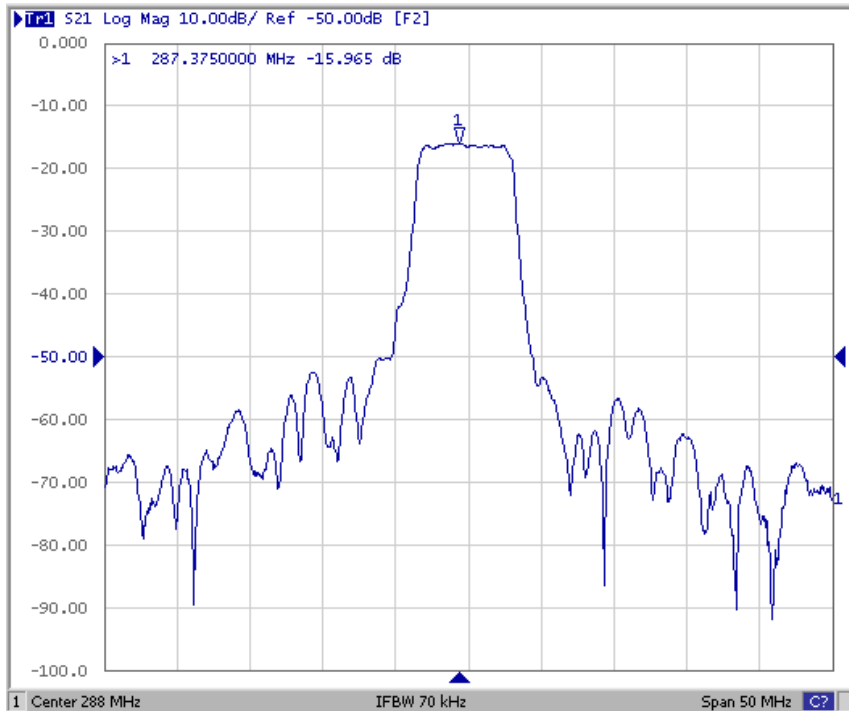
Characteristics	Value			Wanted
	Min.	Typ.	Max.	
Center frequency Fc MHz	-	288	-	-
Minimum Insertion loss IL dB	-	15.8	17.0	-
1.5dB Bandwidth MHz	5.6	6.23	-	-
Amplitude Ripple (Fc ± 2.5MHz) dB	-	0.8	1.2	-
Group-delay Ripple (Fc ± 2.8MHz) nsec	-	140	200	-
Average-delay (Fc ± 2.8MHz) usec		0.55		
Input Output Return Loss at Fc dB	9	11		
Temp Coefficient ppm / °C ²		0.032		
Attenuation (Reference level from Min. insertion loss)				
Fc ± 4.30MHz dB	18	23	-	
Fc ± 7.10MHz dB	38	42	-	
Fc ± 9.30MHz dB	43	48	-	
Fc ± 18.6MHz dB	45	55	-	

SAW Filter 288.0MHz
Part No: MP03533

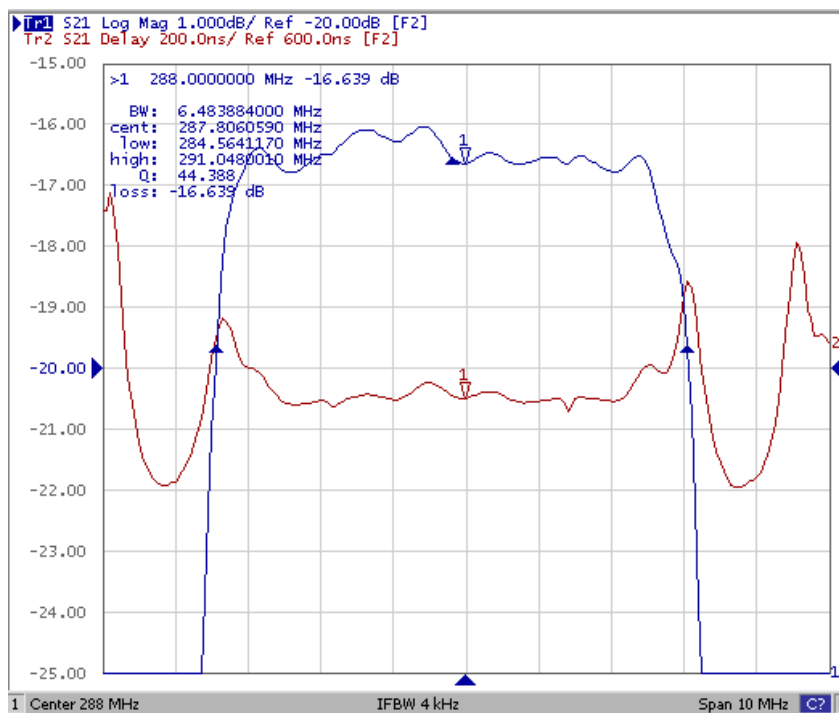
Model: TB0587A
Rev No: 1

C. FREQUENCY CHARACTERISTICS:

1. S21 Response (span 50MHz)



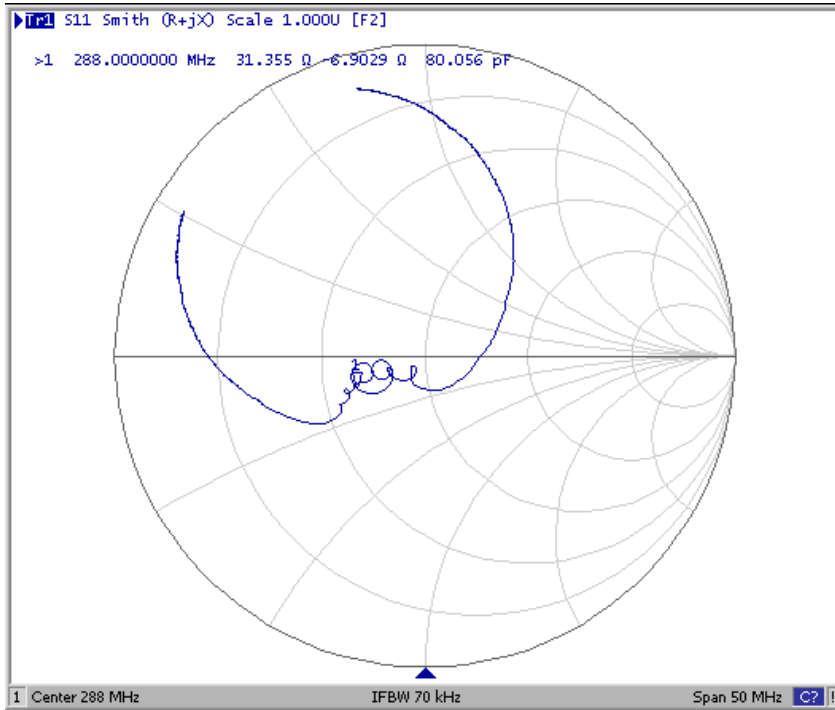
2. Passband Response (span 10MHz)



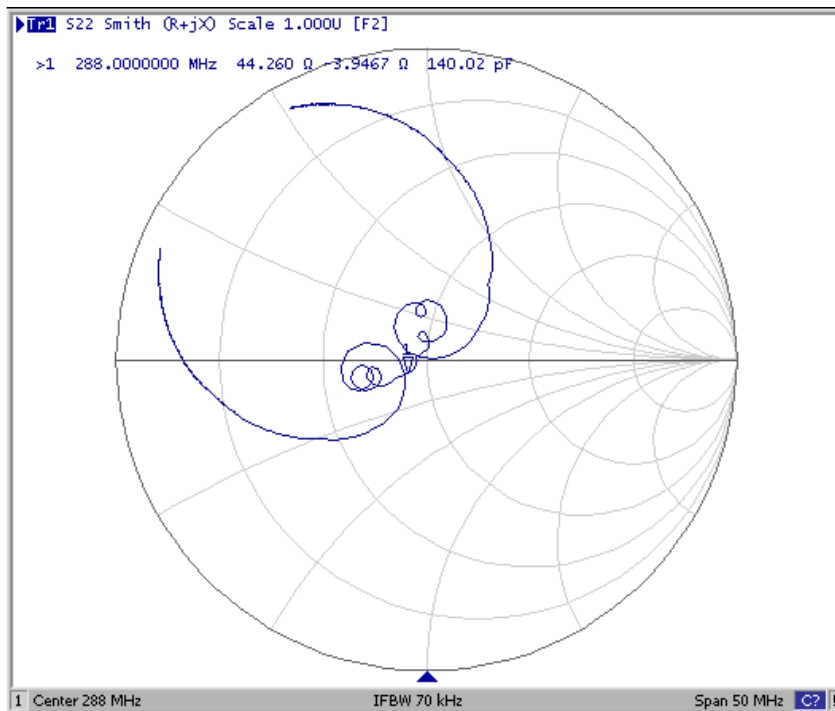
SAW Filter 288.0MHz
Part No: MP03533

Model: TB0587A
Rev No: 1

3. S11 Smith-Chart (span 50MHz)



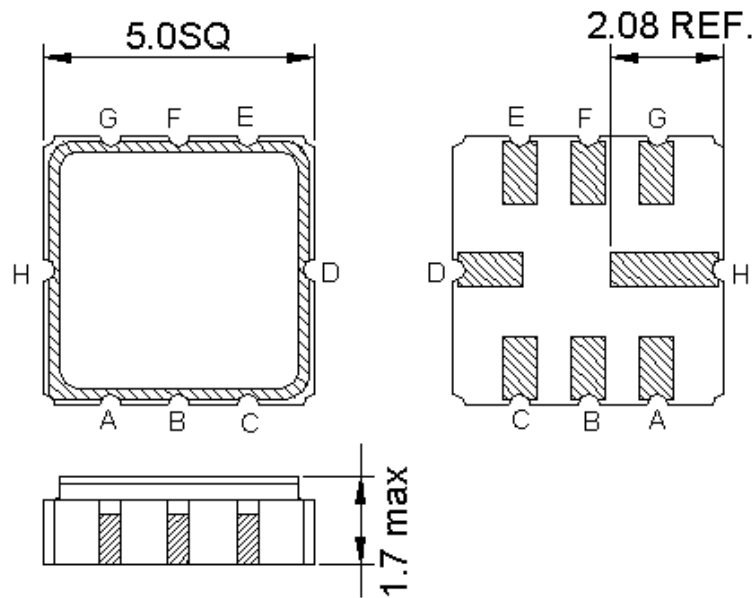
4. S22 Smith-Chart (span 50MHz)



SAW Filter 288.0MHz
Part No: MP03533

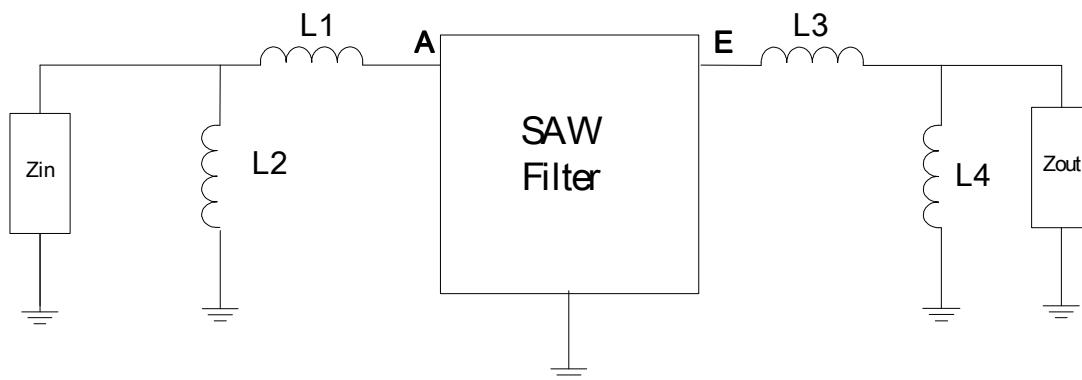
Model: TB0587A
Rev No: 1

D. OUTLINE DRAWING:



- A: RF input
 - E: RF output
 - H, D: Case Ground
 - B, C, G, F: Ground
- Unit: mm

E. MATCHING CIRCUIT:



Z_{IN} and Z_{OUT} are 50Ω

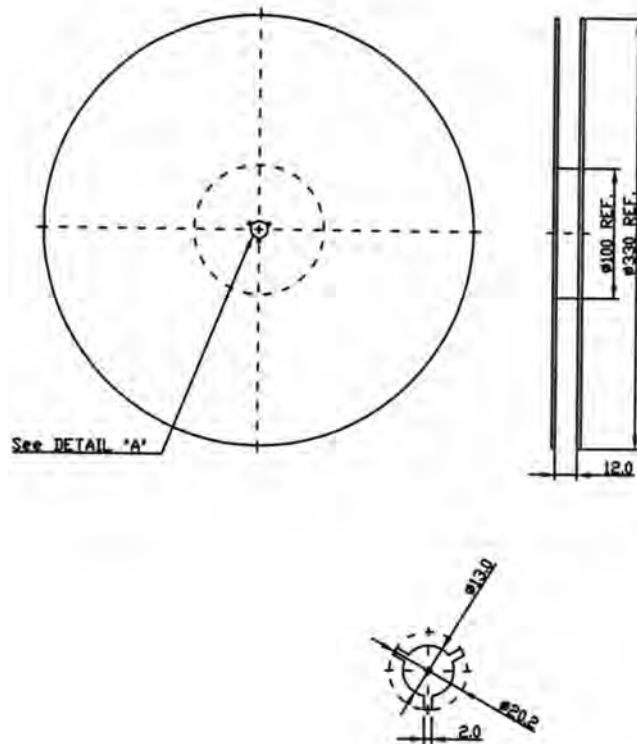
L1 = 47nH, L2 = 8.2nH, L3 = 45nH, L4 = 8.2nH

SAW Filter 288.0MHz
Part No: MP03533

Model: TB0587A
Rev No: 1

F. PACKING:

1. REEL DIMENSION



2. TAPE DIMENSION

