
SAW Filter 61.380MHz

Model: TB0728A

Part No: MP02237

REV NO.: 1

A. MAXIMUM RATING:

1. Input Power Level: 10 dBm
2. Operating Temperature: -20°C to +80°C
3. Storage Temperature: -40°C to +85°C

B. CHARACTERISTICS:

Ambient Temperature: 25 °C

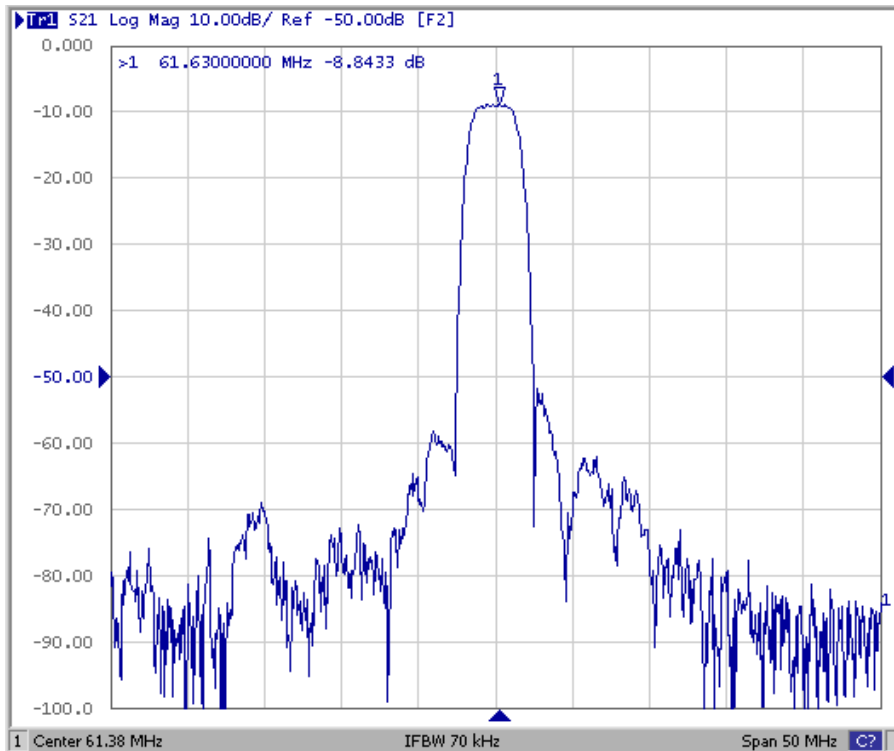
Item	Unit	Min.	Typ.	Max.
Center frequency, Fc	MHz	-	61.38	-
Insertion Loss, IL	dB	-	8.8	10.0
-1 dB Bandwidth	MHz	1.8	2.53	-
-3 dB Bandwidth	MHz	2.8	2.98	-
-40 dB Bandwidth	MHz	-	4.92	5.2
Amplitude Ripple Fc±0.75MHz	dB	-	0.5	1.0
Group-delay Ripple Fc±0.75MHz	dB	-	110	150
Relative Attenuation 1.0 ~ 57.38MHz	dB	45	52	-
Relative Attenuation 65.38 ~150MHz	dB	45	48	-
Temp Coefficient	ppm/K	-23		

SAW Filter 61.380MHz
Part No: MP02237

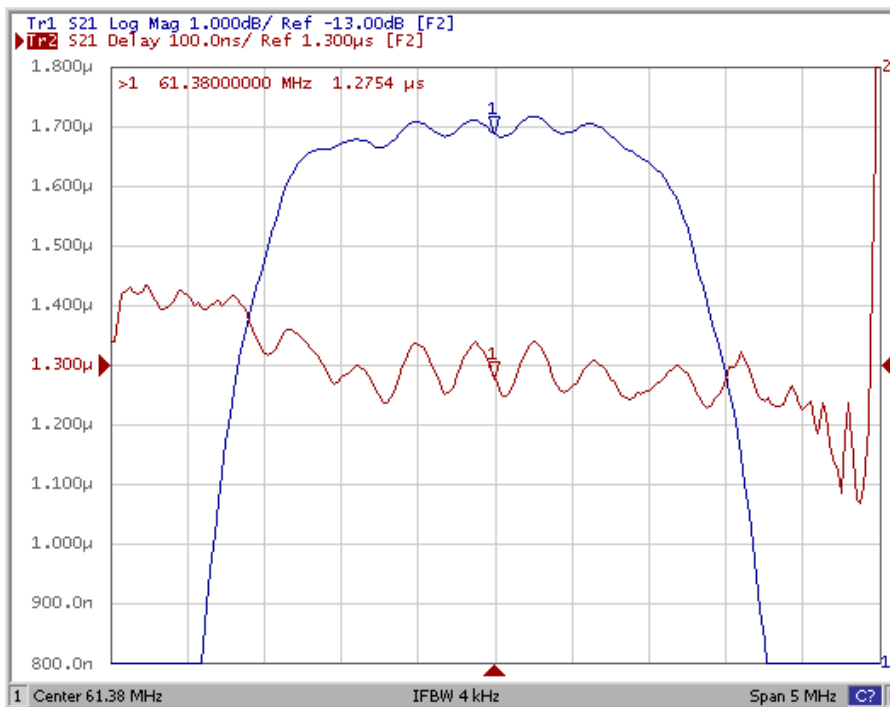
Model: TB0728A
REV NO.: 1

C. FREQUENCY CHARACTERISTICS:

(1) wide band Response:(span 50MHz)



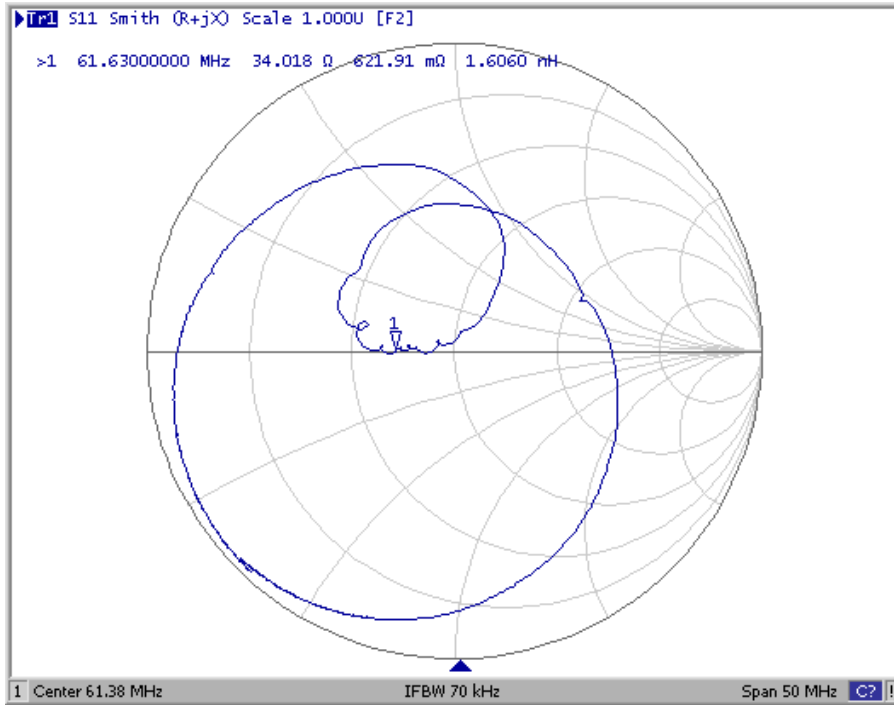
(2) Pass band Response and Group Delay Variation: (span 5MHz)



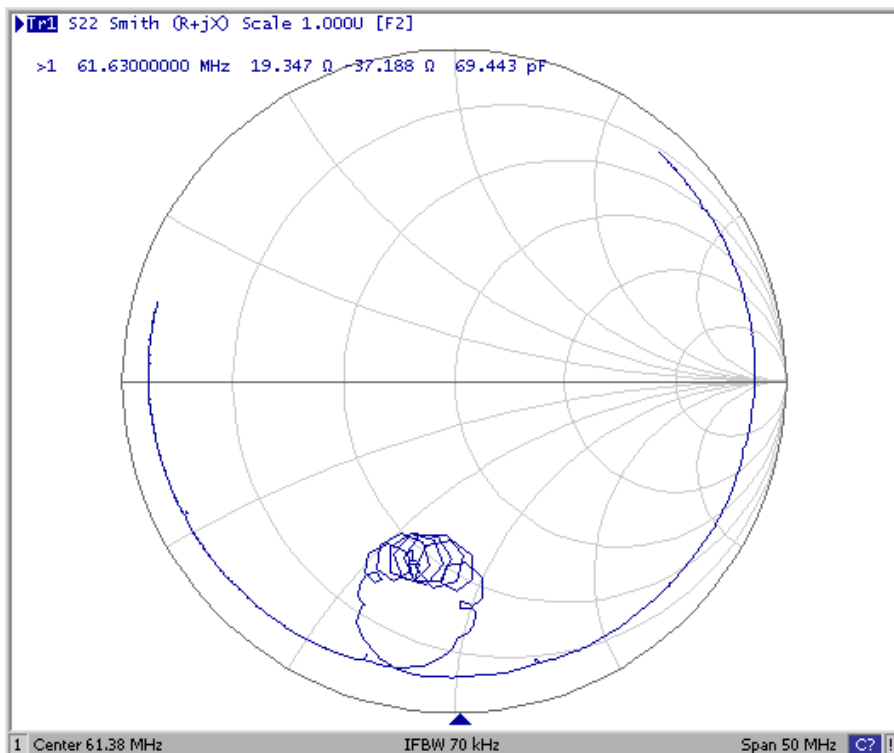
SAW Filter 61.380MHz
Part No: MP02237

Model: TB0728A
REV NO.: 1

(3) S11 Smith-Chart: (span 50MHz)



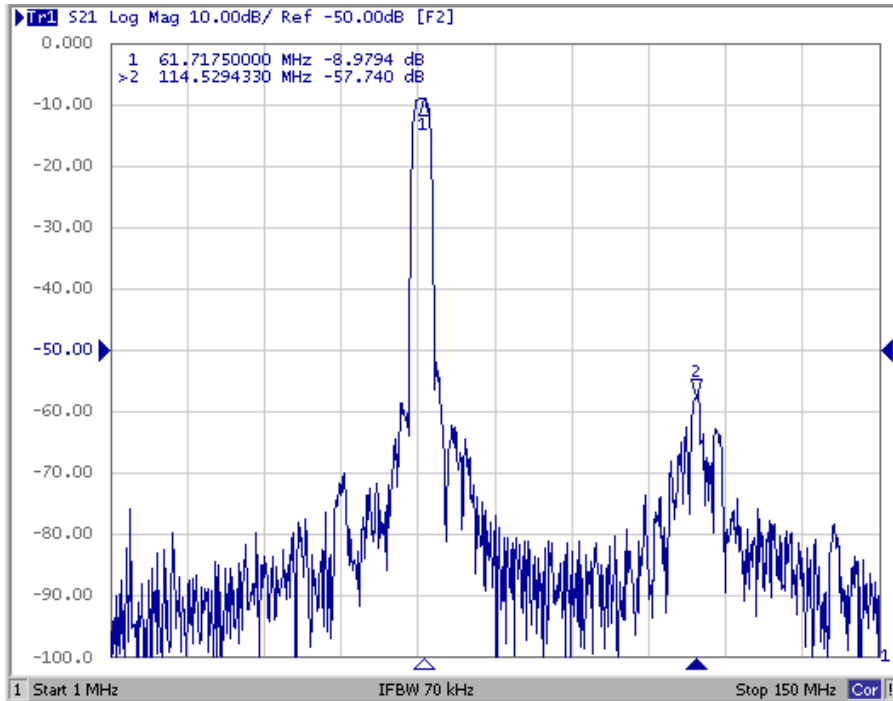
(4) S22 Smith-Chart: (span 50MHz)



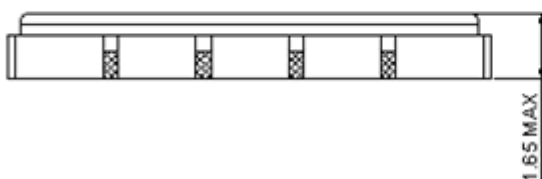
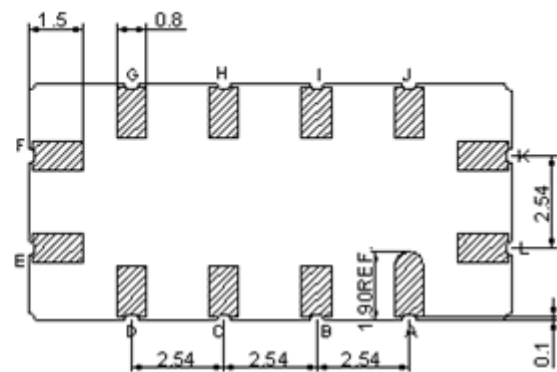
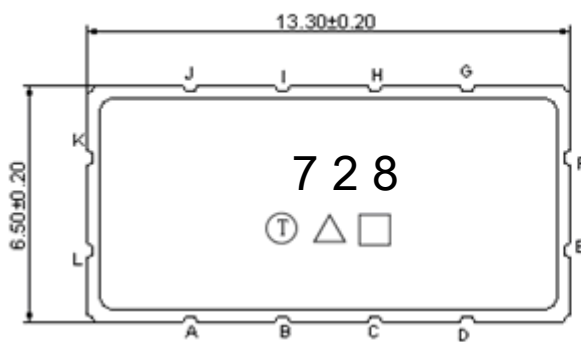
SAW Filter 61.380MHz
Part No: MP02237

Model: TB0728A
REV NO.: 1

(5) wide band Response:(span 150MHz)



D. OUTLINE DRAWING:



Pin K : RF Input
 Pin E : RF Output
 Pin A,B,C,D,F,G,H,I,J,L : Ground
 Unit: mm

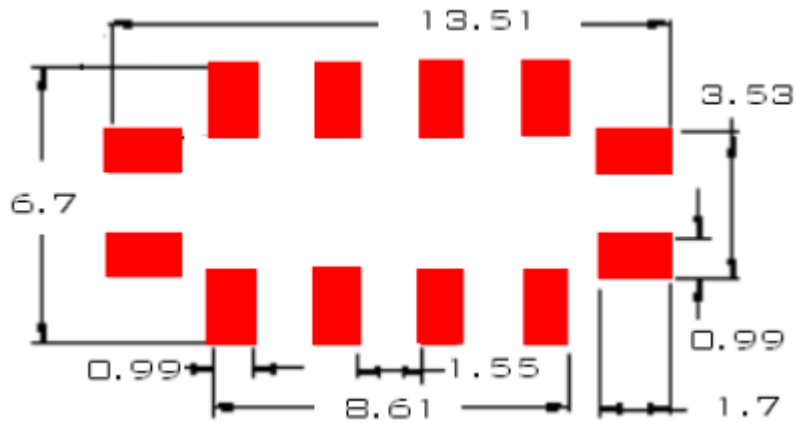
SAW Filter 61.380MHz

Model: TB0728A

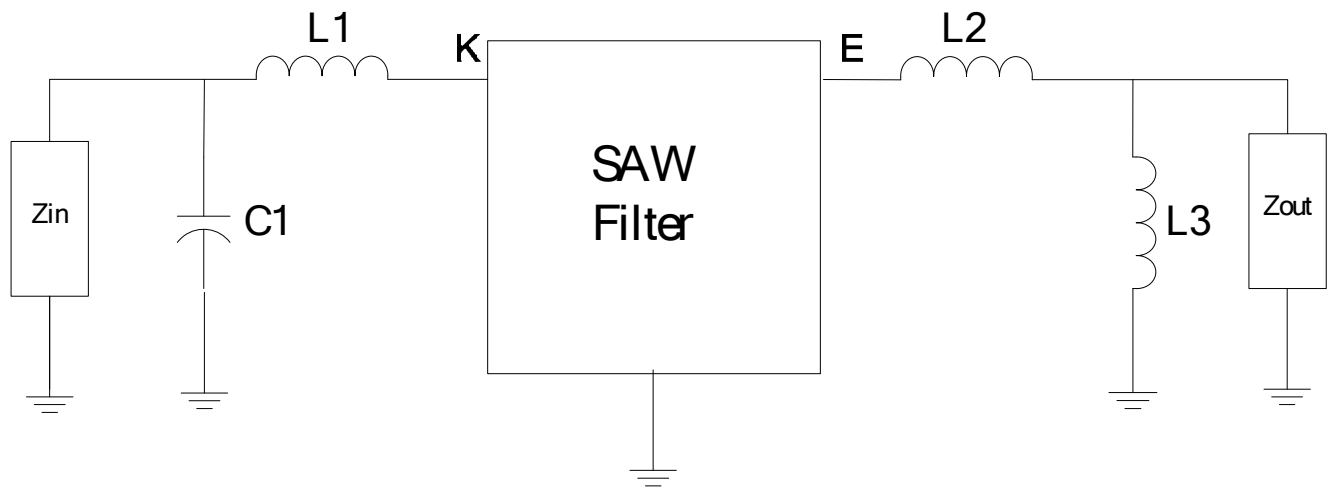
Part No: MP02237

REV NO.: 1

E. PCB FOOTPRINT:



F. MATCHING CIRCUIT:



$Z_{in} = Z_{out} = 50 \text{ ohm}$

$L1 = 180 \text{ nH}, C1 = 110 \text{ pF}, L2 = 82 \text{ nH}, L3 = 220 \text{ nH}$

SAW Filter 61.380MHz

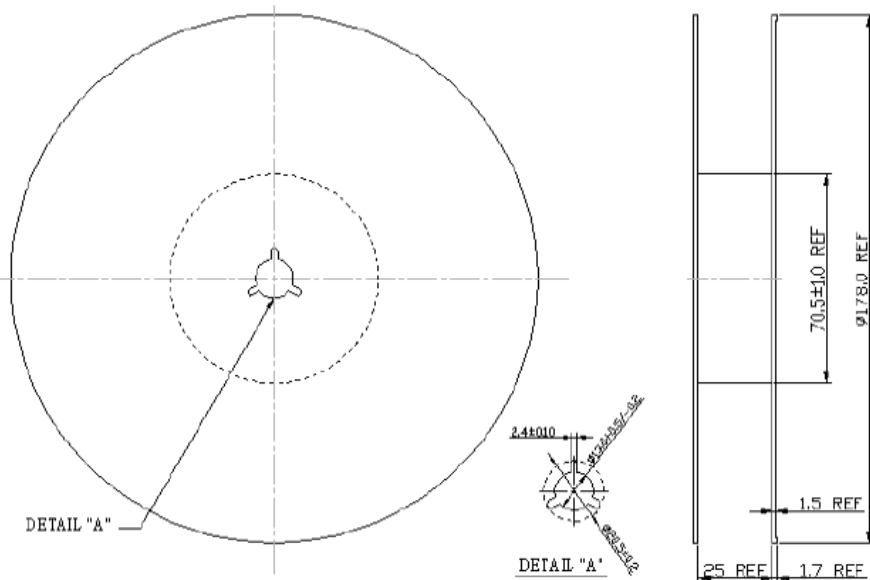
Model: TB0728A

Part No: MP02237

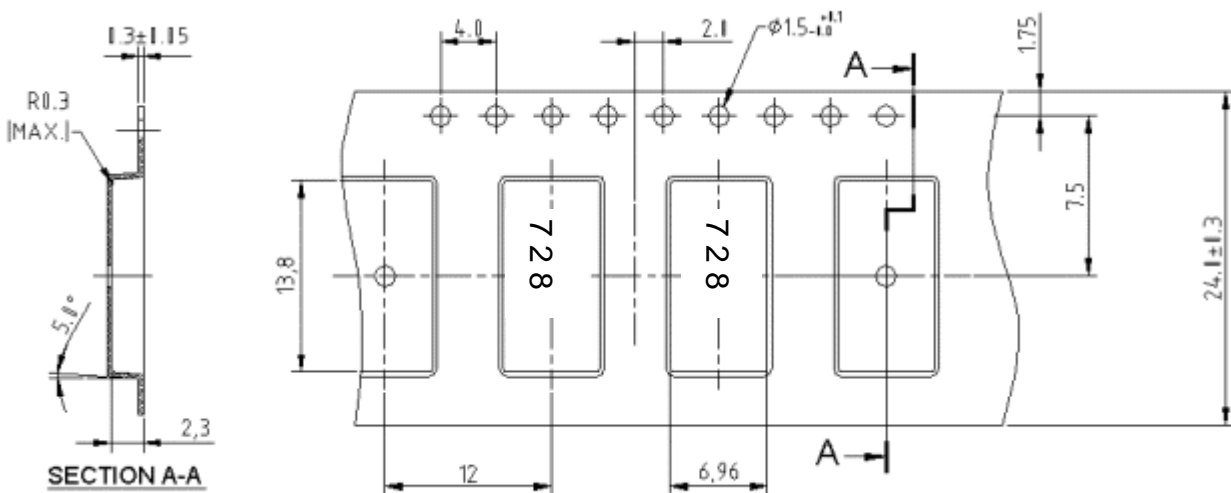
REV NO.: 1

G. PACKING:

(1). REEL DIMENSION:



(2). TYPE DIMENSION:



SAW Filter 61.380MHz

Model: TB0728A

Part No: MP02237

REV NO.: 1

H. RECOMMENDED REFLOW PROFILE:

