

**SAW Filter 868.30MHz**

**Model: TA0828A**

**Part No: MP01540**

**Rev. No: 1**

**A. MAXIMUM RATING:**

1. Input Power Level: 17dBm
2. DC voltage: 0V
3. Operating Temperature: -45°C to +120°C
4. Storage Temperature: -45°C to +120°C

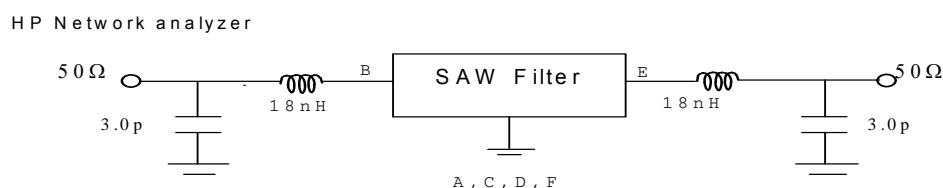
**B. ELECTRICAL CHARACTERISTICS:**

Reference temperature: 25°C

Item	Min.	Typ.	Max.	Note
Center frequency Fc (MHz)	-	868.30	-	1
Minimum IL (dB) IL	-	3.1	3.8	
Pass band (relative to IL min)				
868.1~868.5 MHz (dB)	-	0.6	2.0	1
868.0~868.6 MHz (dB)	-	0.9	3.0	
Pass bandwidth (relative to IL min) BW3 (kHz)	-	1300	-	
Attenuation:( relative to IL min) (dB)				
10 ~ 830MHz (dB)	40	45	-	1
830 ~ 850MHz (dB)	35	40	-	
850 ~ 865.2MHz (dB)	25	28	-	
871 ~ 874.5MHz (dB)	15	24	-	
874.5 ~ 883MHz (dB)	22	26	-	
883 ~ 900MHz (dB)	30	35	-	
900 ~ 1000MHz (dB)	40	45	-	
Impedance at Fc				
Input Z <sub>IN</sub> = R <sub>IN</sub> // C <sub>IN</sub>	210Ω // 2.1pF			
Output Z <sub>OUT</sub> = R <sub>OUT</sub> // C <sub>OUT</sub>	210Ω // 2.1pF			

Note 1: The standard definitions is in JIS C 6703

**C. MEASUREMENT CIRCUIT:**

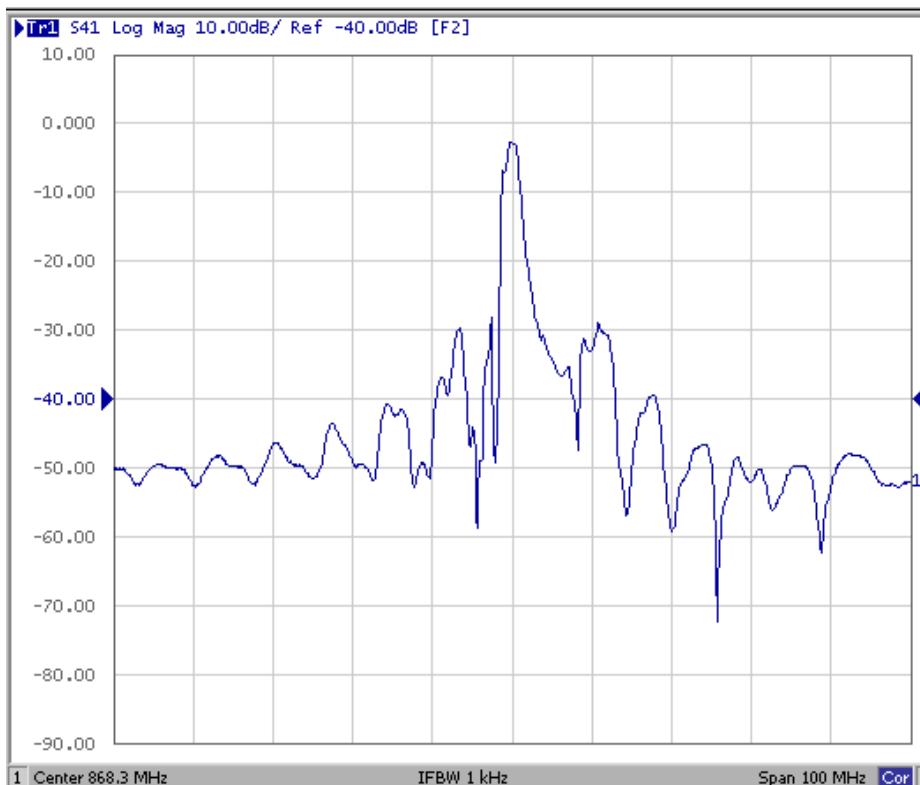
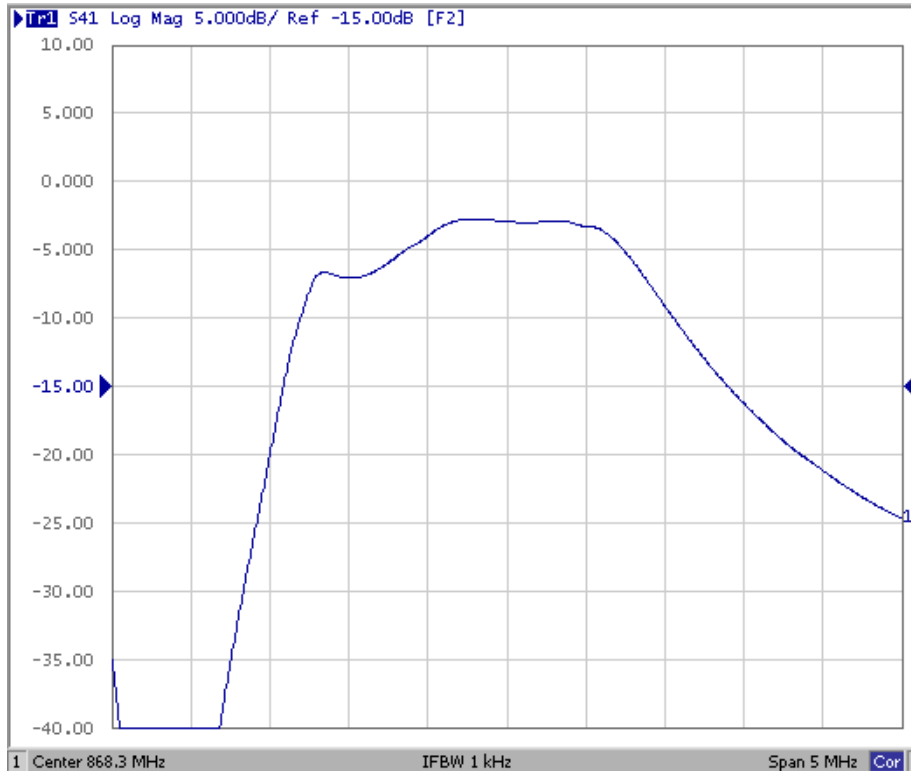


**SAW Filter 868.30MHz**  
**Part No: MP01540**

**Model: TA0828A**  
**Rev. No: 1**

**D. FREQUENCY CHARACTERISTICS:**

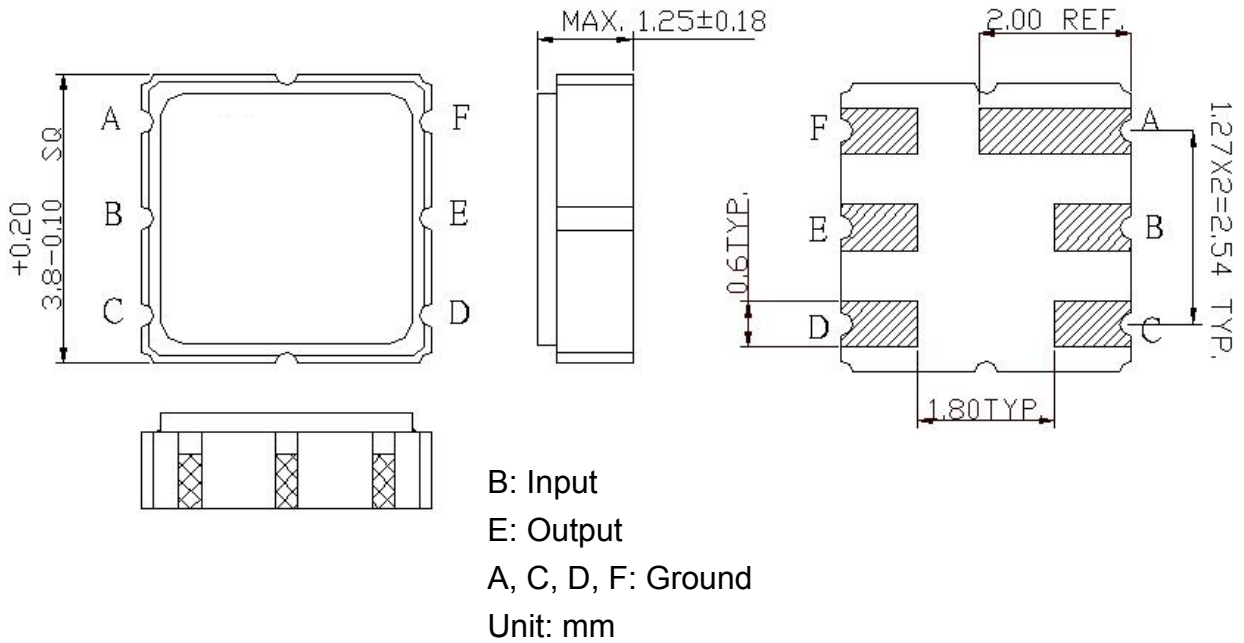
The response included the loss of matching circuit.



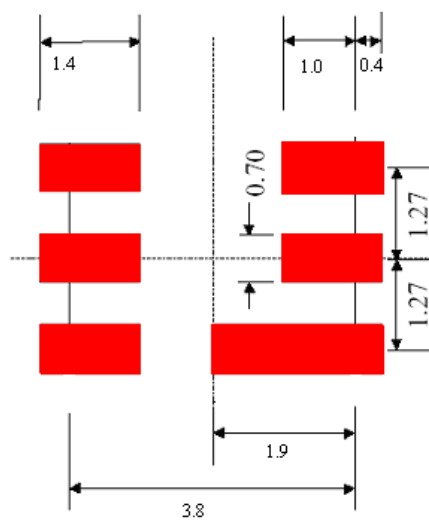
**SAW Filter 868.30MHz**  
**Part No: MP01540**

**Model: TA0828A**  
**Rev. No: 1**

**E. OUTLINE DRAWING:**



**F. PCB FOOTPRINT:**

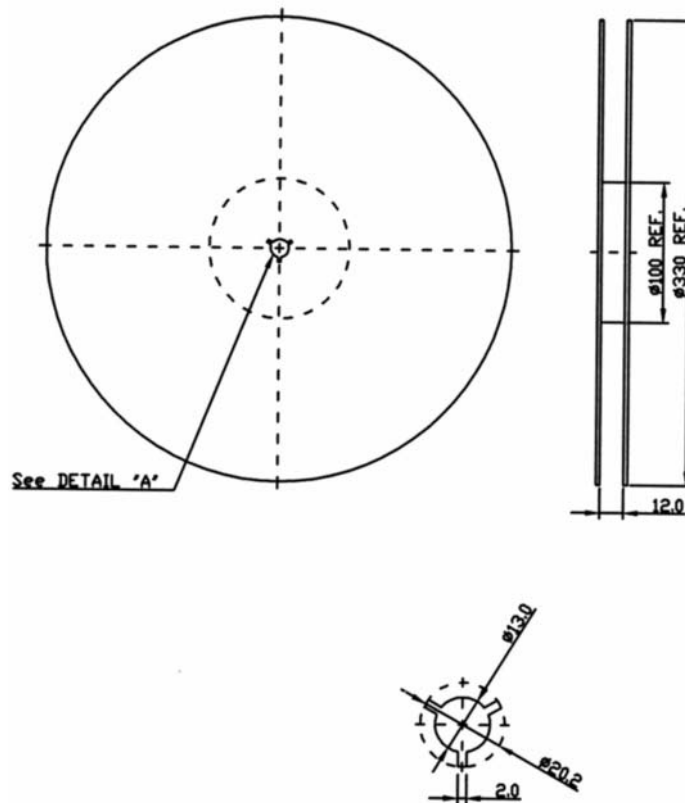


**SAW Filter 868.30MHz**  
**Part No: MP01540**

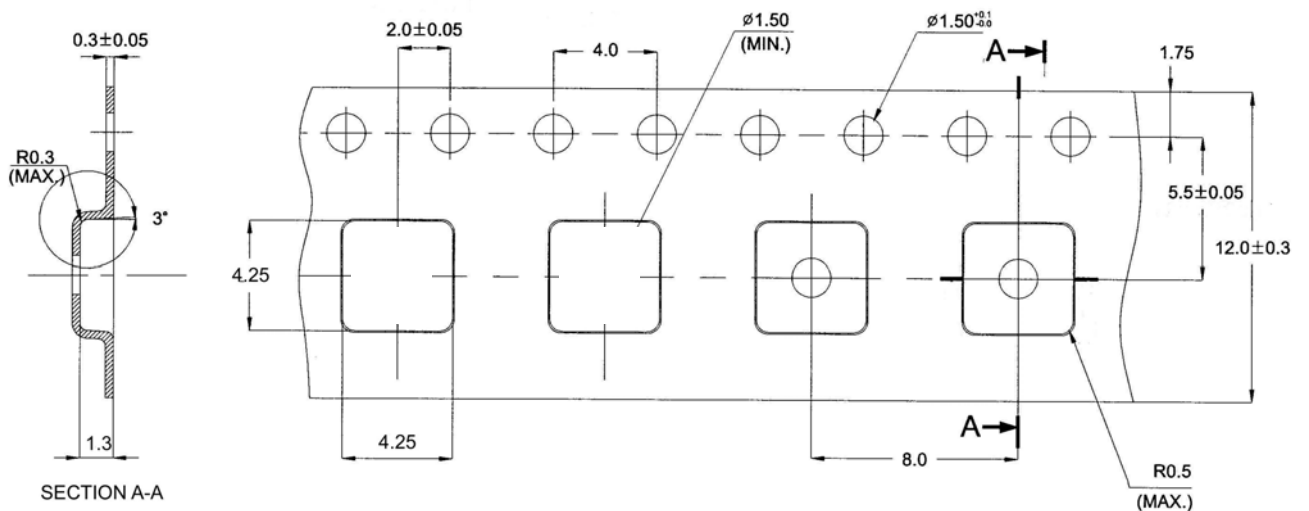
**Model: TA0828A**  
**Rev. No: 1**

**G. PACKING:**

1. Reel Dimension



2. Tape Dimension



**SAW Filter 868.30MHz**  
**Part No: MP01540**

**Model: TA0828A**  
**Rev. No: 1**

**H. RECOMMENDED REFLOW PROFILE:**

