

**SAW Filter 456.0MHz**

**Model: TB0492A**

**Part No: MP01279**

**REV. NO.: 1**

**A. MAXIMUM RATING:**

1. Operating Temperature: -40°C ~ +90°C
2. Storage Temperature: -40°C ~ +90°C
3. Input Power Level: 10 dBm

**B. CHARACTERISTICS:**

1. Ambient Temperature: 25 °C
2. Optimal Source Impedance(Balanced): 200 ohms
3. Optimal Load Impedance(Balanced): 200 ohms

Characteristics	Value			Note
	Min.	Typ.	Max.	
Center Frequency $F_c$ MHz	-	456.0	-	-
Minimum Insertion Loss dB		10.2	11.0	
Passband Ripple ( $F_c \pm 2.9\text{MHz}$ ) dB	-	0.8	1.5	-
Passband Ripple ( $F_c \pm 5.2\text{MHz}$ ) dB		1.7	2.0	
Group Delay Ripple ( $F_c \pm 5.2\text{MHz}$ ) nS	-	80	150	-
Absolute group delay (at $F_c$ ) uS		0.44		
Attenuation:( Reference level from minimum insertion loss)				dB
1) $F_c \pm 10.0\text{MHz} \dots F_c \pm 43.0\text{MHz}$ dB	37	40	-	-
2) 411 MHz ~ 413 MHz dB	40	53	-	-
3) 393 MHz ~ 411 MHz dB	40	53	-	-
4) 343 MHz ~ 393 MHz dB	42	56	-	-
Temp Coefficient ppm/°C <sup>2</sup>				-18

**SAW Filter 456.0MHz**

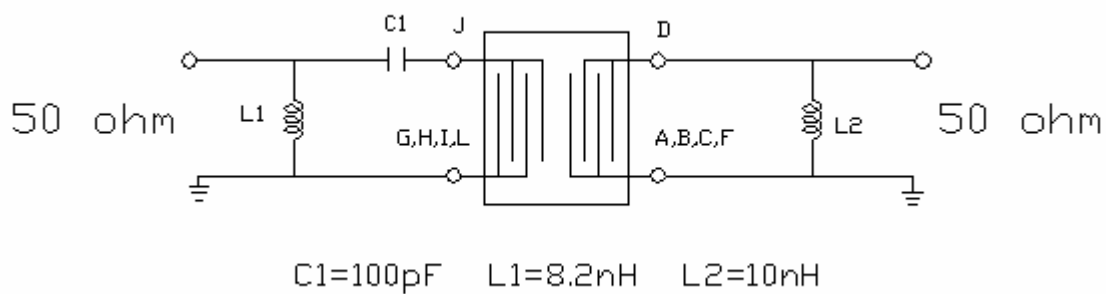
**Model: TB0492A**

**Part No: MP01279**

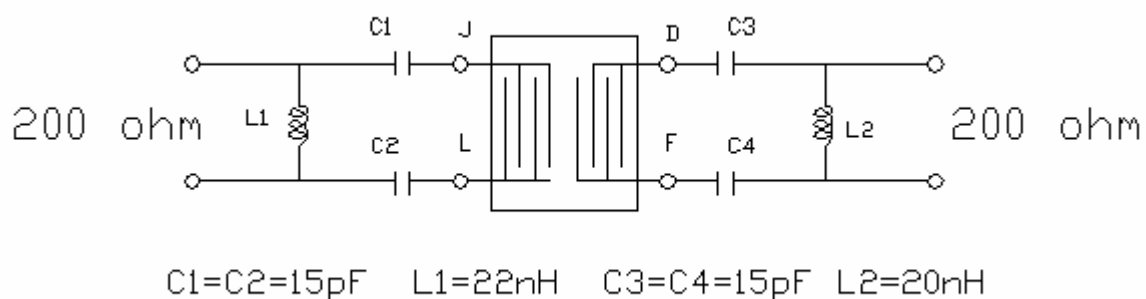
**REV. NO.: 1**

**C. MEASUREMENT CIRCUIT:**

(1) Single end 50 ohm to Single end 50 ohm



(2) Balanced 200 ohm to Balanced 200 ohm



**SAW Filter 456.0MHz**  
**Part No: MP01279**

**Model: TB0492A**  
**REV. NO.: 1**

## D. Frequency Characteristics :

### 1. S21 Response

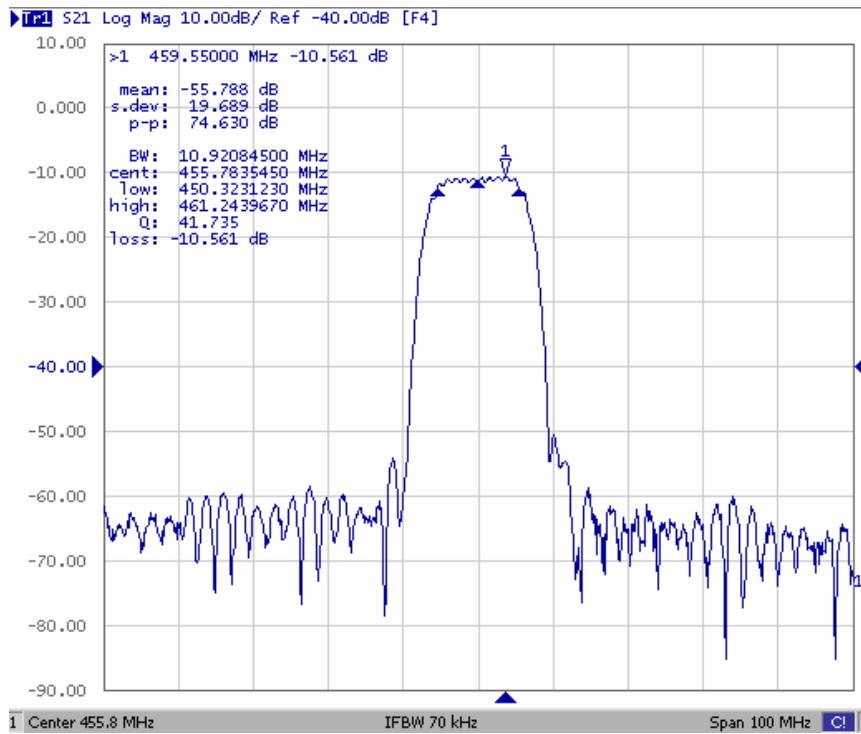


Fig1. Horizontal: 10MHz/Div Vertical: 10dB/Div

### 2. Pass band Ripple

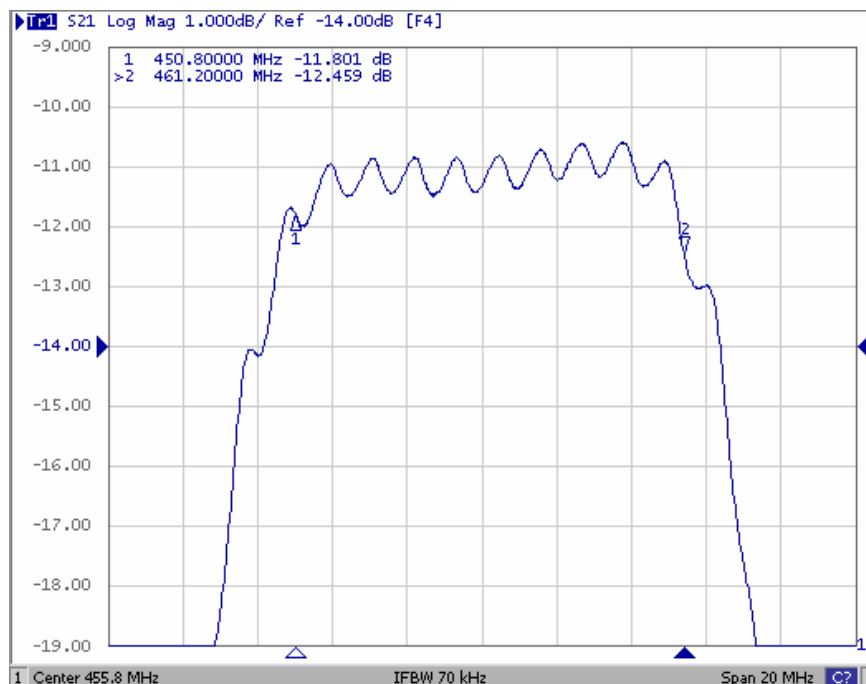


Fig2. Horizontal: 2MHz/Div Vertical: 1dB/Div

**SAW Filter 456.0MHz**  
**Part No: MP01279**

**Model: TB0492A**  
**REV. NO.: 1**

### 3. Group Delay Ripple

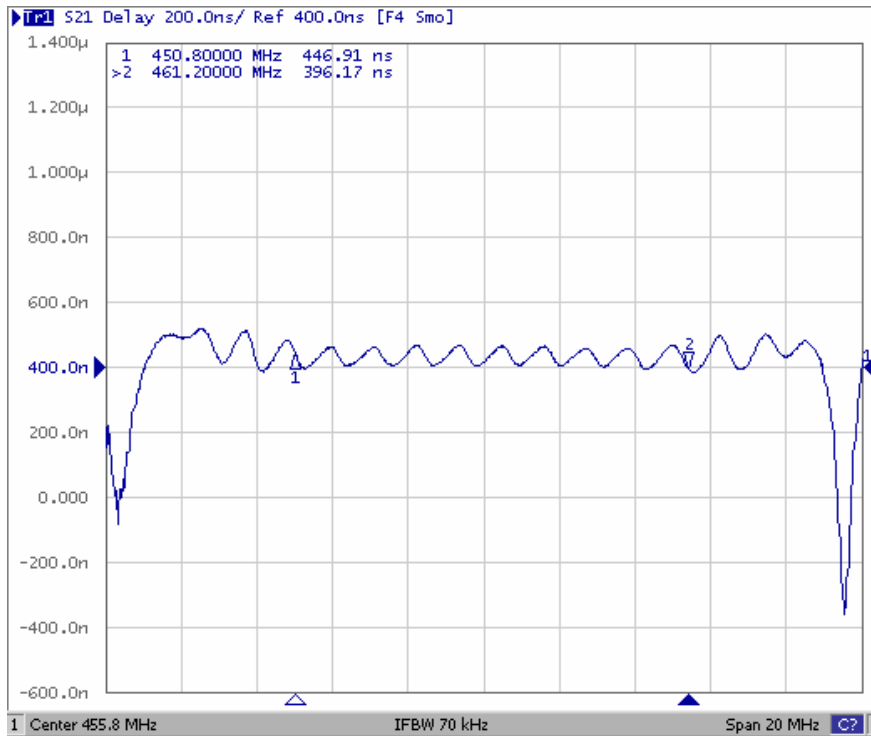


Fig2. Horizontal: 2MHz/Div Vertical: 100nS/Div

### 4. Wide band Response

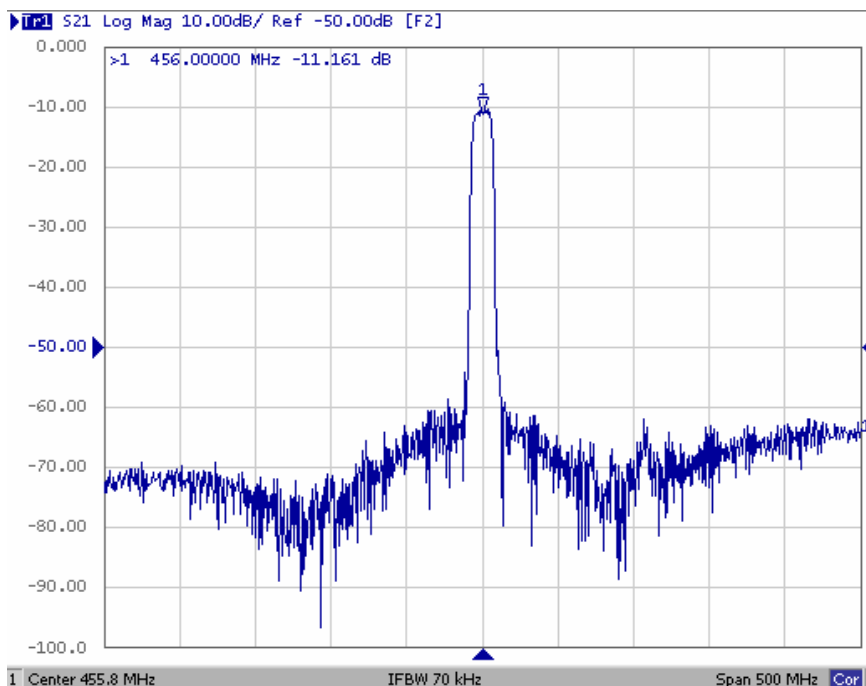


Fig4. Horizontal: 50MHz/Div Vertical: 10dB/Div

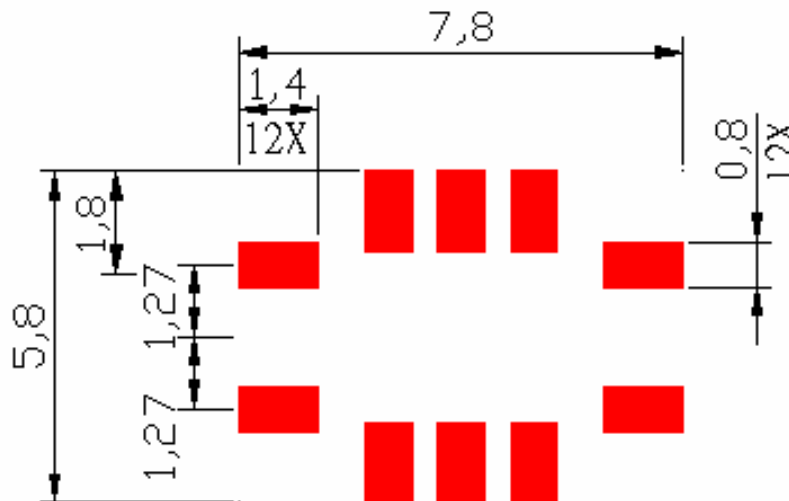
**SAW Filter 456.0MHz**

**Model: TB0492A**

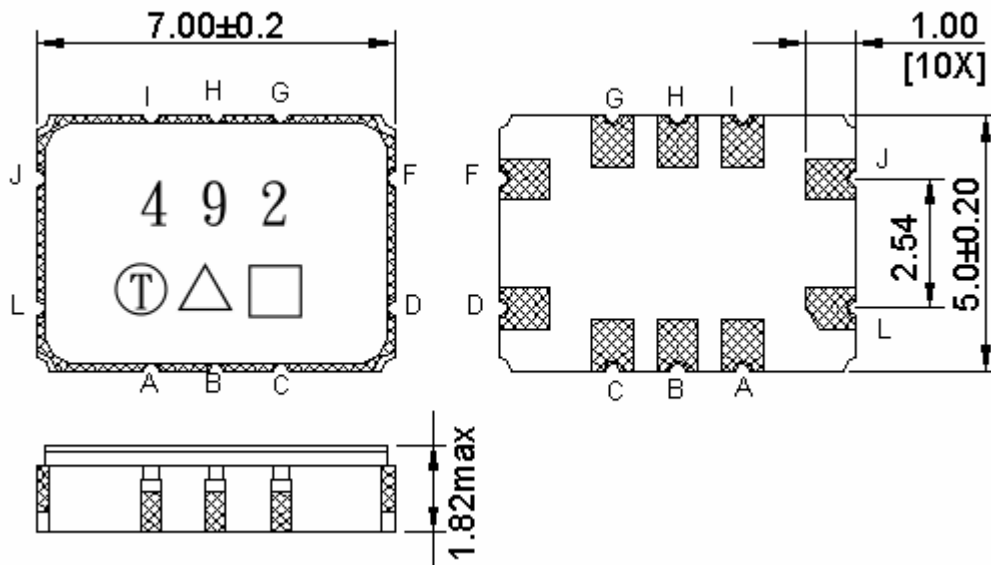
**Part No: MP01279**

**REV. NO.: 1**

**E. PCB FOOTPRINT:**



**F. OUTLINE DRAWING:**



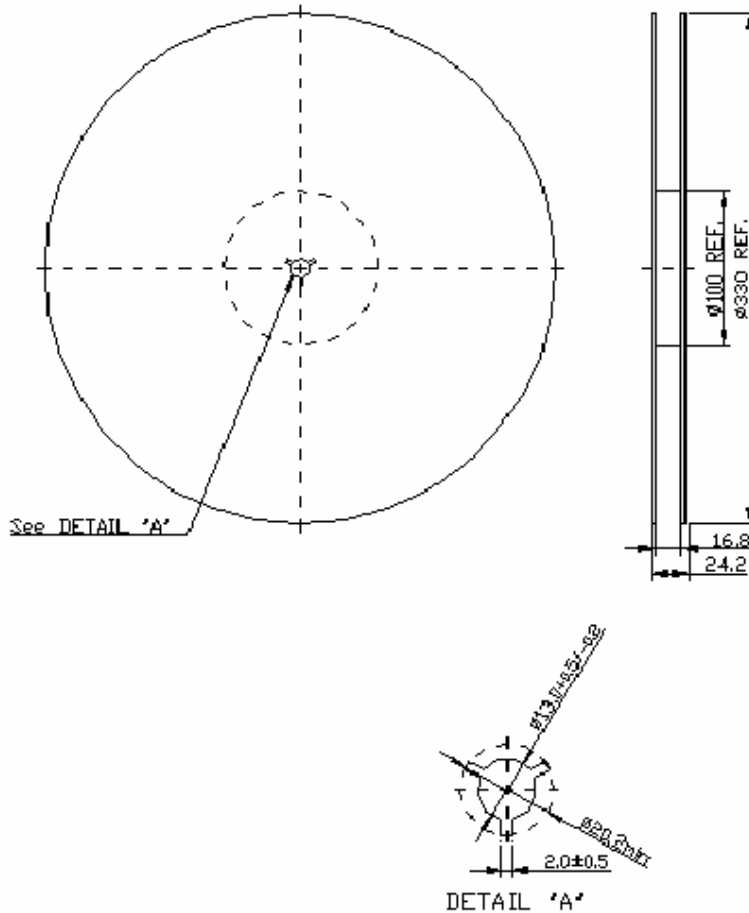
- Pin J : Balanced Input or single ended input
  - Pin D : Balanced Output or single ended Output
  - Pin F : Balanced Input return or single ended Input ground
  - Pin L : Balanced Output return or single ended Output ground
  - Pin A,B,C,G,H,I : To be Ground
- Units: mm

**SAW Filter 456.0MHz**  
**Part No: MP01279**

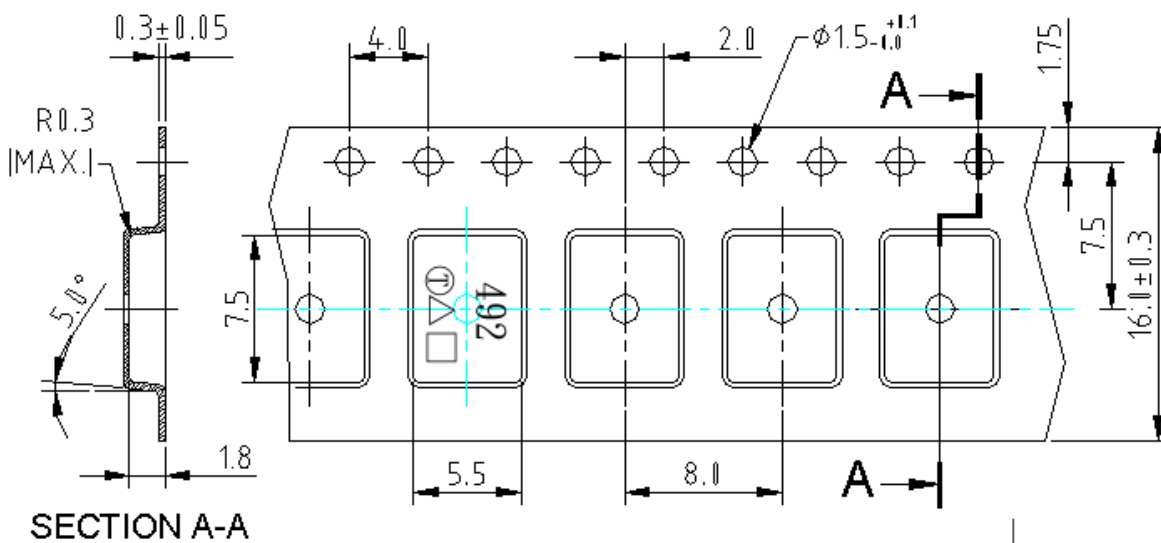
**Model: TB0492A**  
**REV. NO.: 1**

**G. PACKING:**

1. REEL DIMENSION



2. TAPE DIMENSION



**SAW Filter 456.0MHz**

**Model: TB0492A**

**Part No: MP01279**

**REV. NO.: 1**

**H. RECOMMENDED REFLOW PROFILE:**

